



VK2



VK2-2MPCCPL



VK2-2MPCCW

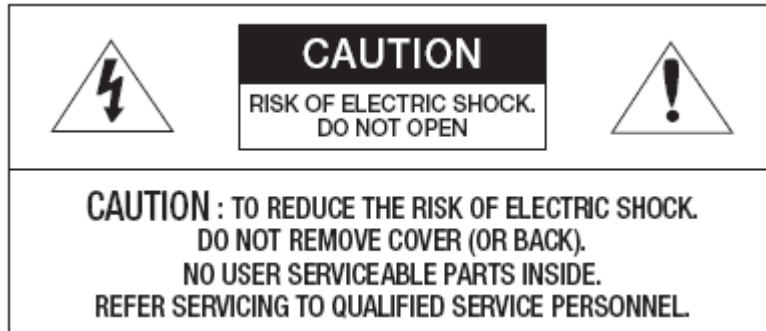
Installation quick guide

WARNING

TO REDUCE THE RISK OF FIRE OR ELECTRIC SHOCK, DO NOT EXPOSE THIS PRODUCT TO RAIN OR MOISTURE. DO NOT INSERT ANY METALLIC OBJECT THROUGH THE VENTILATION GRILLS OR OTHER OPENINGS ON THE EQUIPMENT.

Apparatus shall not be exposed to dripping or splashing and that no objects filled with liquids, such as vases, shall be placed on the apparatus.

CAUTION



EXPLANATION OF GRAPHICAL SYMBOLS



The lightning flash with arrowhead symbol, within an equilateral triangle, is intended to alert the user to the presence of uninsulated "dangerous voltage" within the product's enclosure that may be of sufficient magnitude to constitute a risk of electric shock.



The exclamation point within an equilateral triangle is intended to alert the user to the presence of important operating and maintenance (servicing) instructions in the literature accompanying the appliance.

CAUTION: CHANGES OR MODIFICATIONS NOT EXPRESSLY APPROVED BY THE PARTY RESPONSIBLE FOR COMPLIANCE COULD VOID THE USER'S AUTHORITY TO OPERATE THE EQUIPMENT.

CE 0678

TO COMPLY WITH RF EXPOSURE COMPLIANCE REQUIREMENTS, THE ANTENNA USED FOR THIS TRANSMITTER MUST BE INSTALLED TO PROVIDE A SEPARATION DISTANCE OF AT LEAST 20cm (7.9in) FROM ALL PERSONS AND MUST NOT BE CO-LOCATED OR OPERATING IN CONJUNCTION WITH ANY OTHER ANTENNA OR TRANSMITTER.

HEREBY, VISTA DECLARES THAT THIS PRODUCT IS IN COMPLIANCE WITH THE ESSENTIAL REQUIREMENTS AND OTHER RELEVANT PROVISIONS OF DIRECTIVE 1999/5/EC.

A COPY OF THE ORIGINAL DECLARATION OF CONFORMITY MAY BE OBTAINED FROM NORBAIN SD LTD (VISTA) 210 WHARFEDALE ROAD, IQ WINNERSH, WOKINGHAM RG41 5TP ENGLAND

THIS DIGITAL EQUIPMENT FULFILLS THE REQUIREMENTS FOR RF EMISSION ACCORDING TO THE CLASS B LIMIT OF EN 55022.

THIS PRODUCT FULFILLS THE REQUIREMENTS FOR IMMUNITY ACCORDING TO EN 55024 AND EN 50130-4 OFFICE AND COMMERCIAL ENVIRONMENTS.

CAUTION

RISK OF EXPLOSION IF THE BATTERY IS REPLACED WITH AN INCORRECT TYPE.

DISPOSE OF USED BATTERIES ACCORDING TO THE INSTRUCTIONS.

IMPORTANT SAFETY INSTRUCTIONS

1. Read these instructions.
2. Keep these instructions.
3. Heed all warnings.
4. Follow all instructions.
5. Do not use this apparatus near water.
6. Clean only with dry cloth.
7. Do not block any ventilation openings. Install in accordance with the manufacturer's instructions.
8. Do not install near any heat sources such as radiators, heat registers, stoves, or other apparatus (including amplifiers) that produce heat.
9. Do not defeat the safety purpose of the polarized or grounding-type plug. A polarized plug has two blades with one wider than the other. A grounding type plug has two blades and a third grounding prong. The wide blade or the third prong are provided for your safety. If the provided plug does not fit into your outlet, consult an electrician for replacement of the obsolete outlet.
10. Protect the power cord from being walked on or pinched particularly at plugs, convenience receptacles, and the point where they exit from the apparatus.
11. Only use attachments/accessories specified by the manufacturer.
12. Use only with the cart, stand, tripod, bracket, or table specified by the manufacturer, or sold with the apparatus. When a cart is used, use caution when moving the cart/apparatus combination to avoid injury from tip-over.
13. Unplug this apparatus during lightning storms or when unused for long periods of time.
14. Refer all servicing to qualified service personnel. Servicing is required when the apparatus has been damaged in any way, such as power-supply cord or plug is damaged, liquid has been spilled or objects have fallen into the apparatus, the apparatus has been exposed to rain or moisture, does not operate normally, or has been dropped.
15. **CAUTION – THESE SERVICING INSTRUCTIONS ARE FOR USE BY QUALIFIED SERVICE PERSONNEL ONLY. TO REDUCE THE RISK OF ELECTRIC SHOCK DO NOT PERFORM ANY SERVICING OTHER THAN THAT CONTAINED IN THE OPERATING INSTRUCTIONS UNLESS YOU ARE QUALIFIED TO DO SO.**
16. **Use satisfy clause 2.5 of IEC60950-1/UL60950-1 or Certified/Listed Class 2 power source only.**
17. ITE is to be connected only to PoE networks without routing to the outside plant.



1. Description

This manual applies to the VK2-2MPCCW and VK2-2MPCCPL network camera, it is designed as a quick set up guide, for more detailed information refer to the manual on the CD supplied.

Brief model specifications:

Network Camera	Features
VK2-2MPCCW	H.264, MPEG4 and MJPEG Wired and Wireless interface Micro-SD
VK2-2MPCCPL	H.264, MPEG4 and MJPEG Wired interface Micro-SD PoE(Power over Ethernet) Illumination LED PIR Sensor Audio

- **Installation Steps**

Follow these steps to install the cameras on to your local network (LAN):

1. Check the package contents against the list below.
2. Connect the Network Camera.
3. Set an IP address.
4. Set the password.

- **Package Component**

The system comes with the following components:



Camera Unit



Installation Guide/CD



Stand

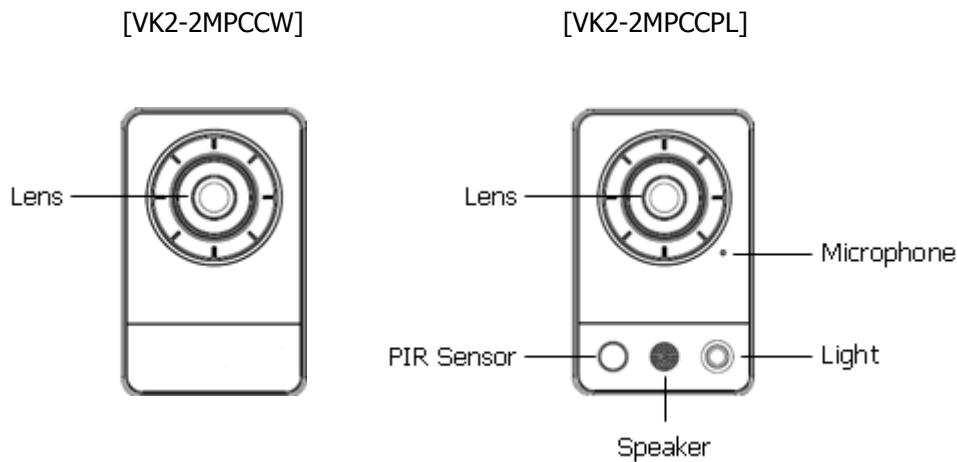


Adaptor

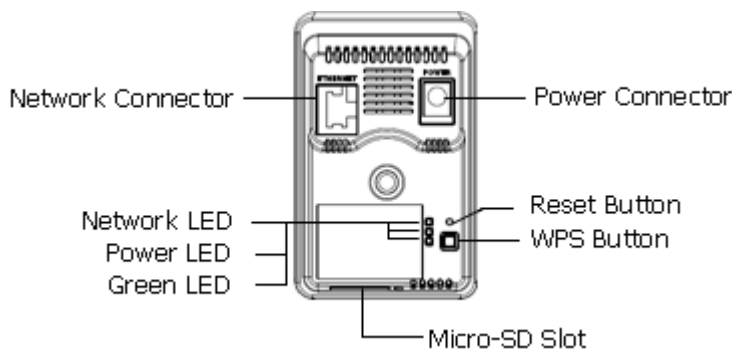
- 1. The Network Camera User's Manual
 2. The SmartManager User's Manual
 3. The VK2-Client User's Manual
 4. The SmartManager Installation software
 5. The VK2-Client Installation software

Note: Check your package to make sure that you received the complete system, including all components shown above.

- **Front View**



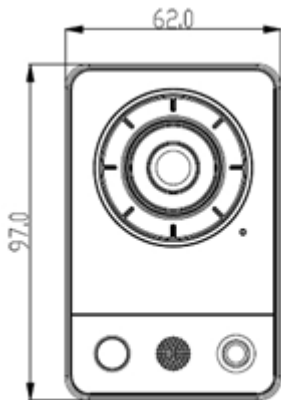
- **Rear View**



NO	Name	Description
1	PIR Sensor	VK2-2MPCCPL is equipped with a PIR Sensor that has a maximum range of 5 meters for detecting movement in the dark.
2	Microphone/Speaker	VK2-2MPCCPL is equipped with a Microphone and Speaker. Two-way audio support allows for remote users to listen in on an area and communicate with visitors or intruders.
3	Light	VK2-2MPCCPL is equipped with White LED that illuminates the scene.
4	Network Connector	Ethernet, RJ-45 port compatible with 10/100Mbps having PoE functionality. Modular Jack
5	Power Connector	For connection of the 5V power adapter (included).
6	Reset Button	Press and hold the Reset Button for one second using a paper clip or thin object. Wait for the camera to reboot.
7	WPS Button	WPS(Wi-Fi Protected Setup) Button, it finds and connects a wireless AP device automatically.
8	Network LED (Green)	Steady for connection to a 100Mbit/s network. Flashes for network activity.
9	Power LED (Green)	Steady green for normal operation or booting. Flashes green during firmware upgrade.
10	Status LED (Red)	Steady red for failed upgrade or booting.

- **Camera Dimension**

See the diagrams below for the exact dimension of the network cameras



[Front View]



[Side View]

Dimensions Unit: mm

2. Installation

2.1 Connection

- **Connecting to the RJ-45**

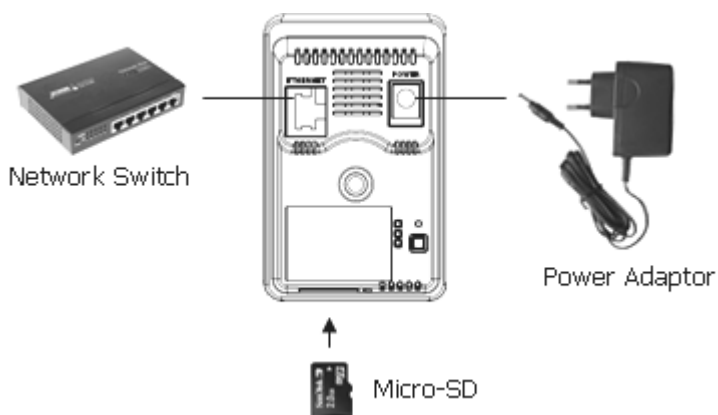
Connect a standard RJ-45 cable to the network port of the network camera. Generally a cross-over cable is used for directly connection to PC, while a direct cable is used for connection to a hub.

- **Micro SD memory slot**

Insert the SD memory card.

- **Connecting the Power**

Connect the supplied DC 5V power adaptor to the camera.



- **Connecting the Wireless using WPS button**

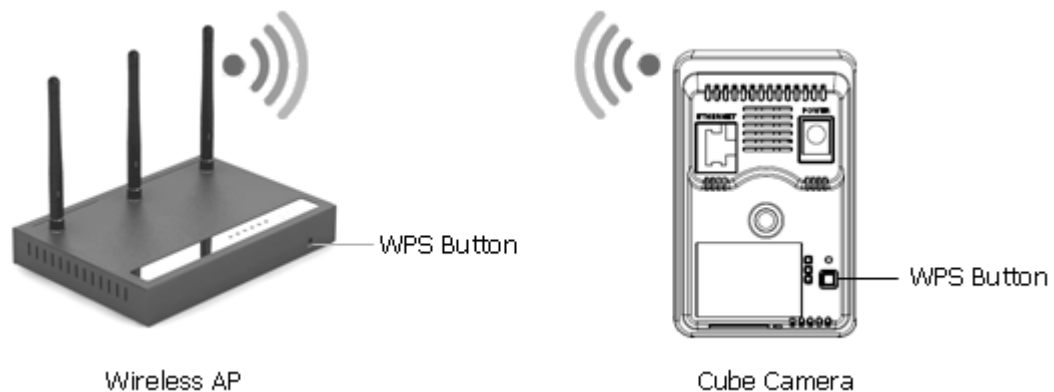
The VK2-2MPCCW supports the wireless function.

Follow steps for a proper operation.

1. Make sure your AP (Access Point) and Operating System support WPS (Wi-Fi Protected Setup) functions. WPS enables easy setup with compatible APs.
2. Press the WPS button on the camera for more 2 seconds, the Status LED will start blinking.
3. Press and hold down the WPS button on your AP (some router/AP will have a virtual button on their management software instead). Refer to your AP's documentation for details using its WPS functions

When WPS configuration is done, wireless connectivity will be established and the security encryption, such as WEP or WPA-PSK, will be synchronized with the AP.

As for IP setting, the camera's use of DHCP or static IP is determined by your configuration on the network camera via the web- based configuration of firmware. The camera's default is DHCP for VK2-2MPCCW.



Notes:

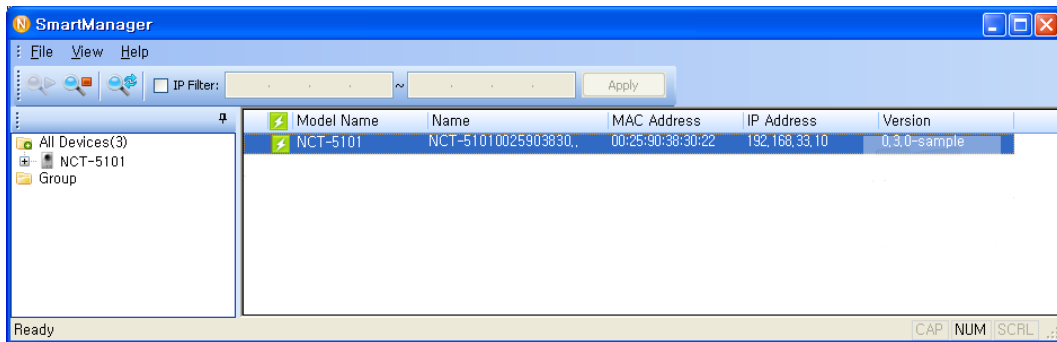
1. WPS may not work if your AP is configured with a "hidden" SSID.
2. If any WPS-enabled AP is not detected, the camera will search APs for 60 seconds after pressing the WPS button, and if the camera still can not detect an AP after 1 minute, the wireless setup will be cancelled.
3. If a camera is assigned with a fixed IP outside the AP's network segment, wireless setup will fail.

2.2 Network Connection and IP assignment

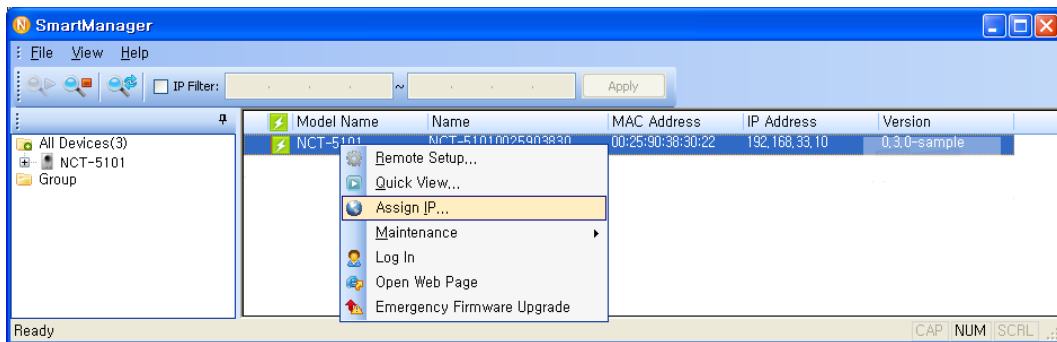
The Network Camera supports the operation through the network. When a camera is first connected to the network it has no IP address. So, it is necessary to allocate an IP address to the device with the "Smart Manager" utility on the CD. (Default IP 192.168.30.220)

1. Connect the Network Camera / device to the network and power up.

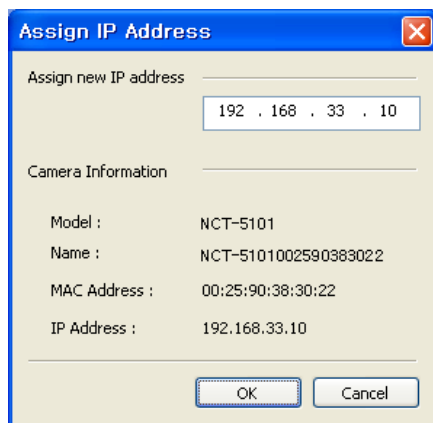
2. Start SmartManager utility (Start>All programs>SmartManager>SmartManager), the main window will be displayed, after a short while any network devices connected to the network will be displayed in the list.



3. Select the camera on the list and click right button of the mouse. You can see the pop-up menu below.



4. Select Assign IP. You can see a Assign IP window. Enter the required IP address.



Note: For more information, refer to the Smart Manger User's Manual.

3. Operation

The Network Camera can be used with Windows operating system and browsers. The recommended browsers are Internet Explorer, Safari, Firefox, Opera and Google Chrome with Windows.

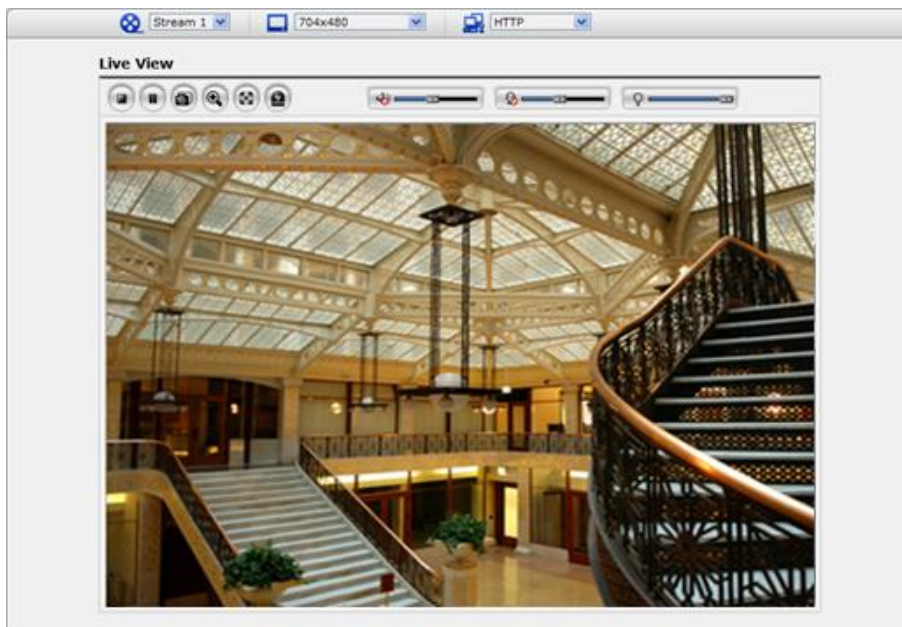
Note: To view streaming video in Microsoft Internet Explorer, set your browser to allow ActiveX controls.

3.1 Access from a browser

1. Start a browser (Internet Explorer).
2. Enter the IP address or host name of the Network Camera in the Location/Address field of your browser.
3. You can see a starting page. Click Live View or Setup to enter web page.



4. The network camera's **Live View** page appears in your browser.



3.2. Access from the internet

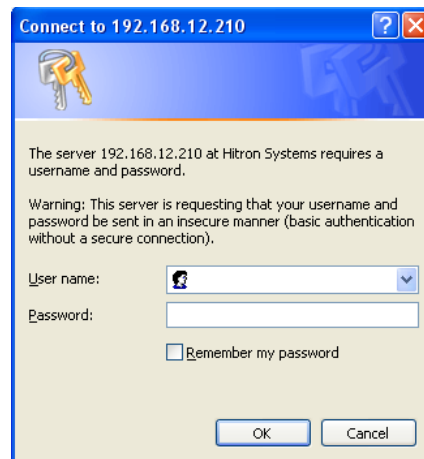
Access from the internet once connected, the Network Camera is accessible on your local network (LAN). To access the network camera from the Internet you must configure your broadband router to allow incoming data traffic to the network camera. To do this, enable the NAT-traversal feature, which will attempt to automatically configure the router to allow access to the network camera. This is enabled from Setup > System > Network > NAT.

For more information, please see "3.5.4 System>Network>NAT" of User's Manual.

3.3 Setting the admin password over a secure connection

To gain access to the product, the password for the default administrator user must be set. This is done in the "Admin Password" dialog, which is displayed when the network camera is accessed for the setup at the first time. Enter your admin name and password, set by the administrator.

Note: The default administrator username and password is "admin". If the password is lost, the Network Camera must be reset to the factory default settings. See "3.8 Resetting to the Factory Default Settings".

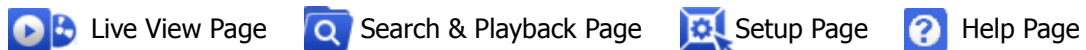


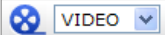
3.4 Live View Page

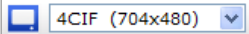
The live view page comes in several screen modes: 1600x1200, 1280x1024, 1280x720, 800x600, 704x480(576), 640x480, 352x240(288) and 320x240. Users are allowed to select the most suitable one out of those modes. Please, adjust the mode in accordance with your PC specifications and monitoring purposes.



1) General controls



 The video drop-down list allows you to select a customized or pre-programmed video stream on the live view page. Stream profiles are configured under Setup > Basic Configuration > Video & Image. For more information, please see "3.5.1 Basic Configuration > Video & Image" of User's Manual.










 The resolution drop-down list allows you to select the most suitable one out of video resolutions to be displayed on live view page.



The protocol drop-down list allows you to select which combination of protocols and methods to use depends on your viewing requirements, and on the properties of your network.

2) Control toolbar

The live viewer toolbar is available in the web browser page only. It displays the following buttons:

-  The Stop button stops the video stream being played. Pressing the key again toggles the start and stop. The Start button connects to the network camera or start playing a video stream.
-  The Pause button pause the video stream being played.
-  The Snapshot button takes a snapshot of the current image. The location where the image is saved can be specified.
-  The digital zoom activates a zoom-in or zoom-out function for video image on the live screen.
-  The Full Screen button causes the video image to fill the entire screen area. No other windows will be visible. Press the 'Esc' button on the computer keyboard to cancel full screen view.
-  The Manual Trigger button activates a pop-up window to manually start or stop the event.
-  Use this scale to control the volume of the speakers.
-  Use this scale to control the volume of the microphone.
-  Use this scale to control the volume of the speakers and microphones.

3) Video Streams

The network camera provides several images and video stream formats. Your requirements and the properties of your network will determine the type you use.

The Live View page in the network camera provides access to H.264, MPEG-4 and Motion JPEG video streams, and to the list of available video streams. Other applications and clients can also access these video streams/images directly, without going via the Live View page.

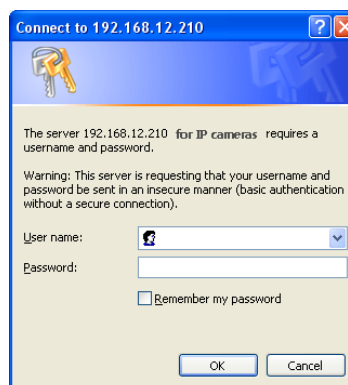
3.5 Network Camera Setup

This section describes how to configure the network camera, and is intended for product Administrators, who have unrestricted access to all the Setup tools; and Operators, who have access to the settings for Basic, Live View, Video & Image, Audio, Event, and System Configuration.

You can configure the network camera by clicking Setup in the top right-hand corner of the Live View page. Click on this page to access the online help that explains the setup tools

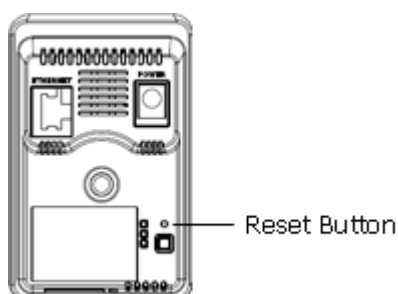
When accessing the Network Camera for the first time, the "Admin Password" dialog appears. Enter your admin name and password, set by the administrator.

Note: If the password is lost, the Network Camera must be reset to the factory default settings. See "3.6 Resetting to the Factory Default Settings".



3.6 Resetting to the factory default settings

To reset the Network Camera to the original factory settings, go to the Setup>System> Maintenance web page (described in "3.5.4 System > Maintenance") or use the Reset button on the network camera, as described below:



- **Using the Reset Button**

Follow the instructions below to reset the Network Camera to the factory default settings using the Reset button.

1. Switch off the Network Camera by disconnecting the power adapter.
2. Press and hold the Reset button with a straightened paperclip while reconnecting the power.
3. Keep the Reset button pressed during about 2 seconds.
4. Release the Reset button, and wait for the Status LED to turn off.
5. The network camera resets to factory defaults and restarts after completing the factory reset.

Caution: When performing a Factory Reset, you will lose any settings you have saved.
(Default IP 192.168.30.220)

3.7 More Information

For more information, please see the Network Camera User's Manual, which is available on the CD included in this package.

