



# VIP2

VK2-1080XVRDPTZ



**Quick Installation guide**



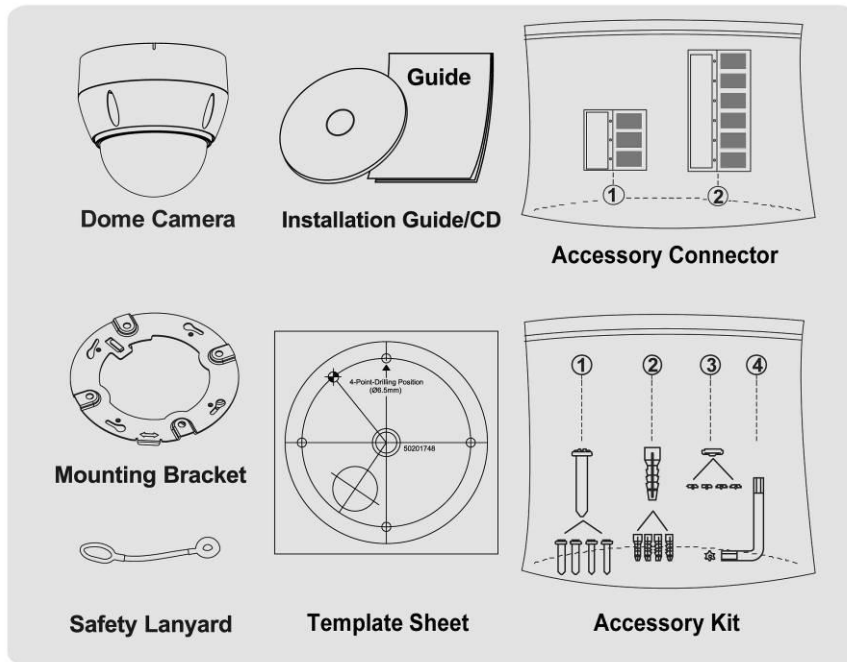
# 1. Description

This manual applies to the VK2-1080XVRDPTZ full HD PTZ vandal resistant day/Night dome.

## 1.1 Components

The VK2-1080XVRDPTZ cameras casing is constructed from Aluminum and the bubble is polycarbonate. The housing is designed to be mounted on a wall or a ceiling. The housing meets the Protection Classification IP66 standards for dust and moisture resistance.

- \* **Dome Camera** ..... 1
- \* **Installation Guide/CD** ..... 1
- \* **Template Sheet** ..... 1
- \* **Mounting Bracket** ..... 1
- \* **Safety Lanyard** ..... 1
- \* **RJ-45 Coupler** ..... 1
- \* **Accessory Kit** ..... 1
  - 1) Mounting screws (PH6 x 35.0) ..... (4)
  - 2) Plastic anchors ..... (4)
  - 3) O-Rings ..... (4)
  - 4) Torx wrench ..... (1)
- \* **Accessory Connector** ..... 1
  - 1) 3-pin terminal block ..... (1)
  - 2) 6-pin terminal block ..... (1)

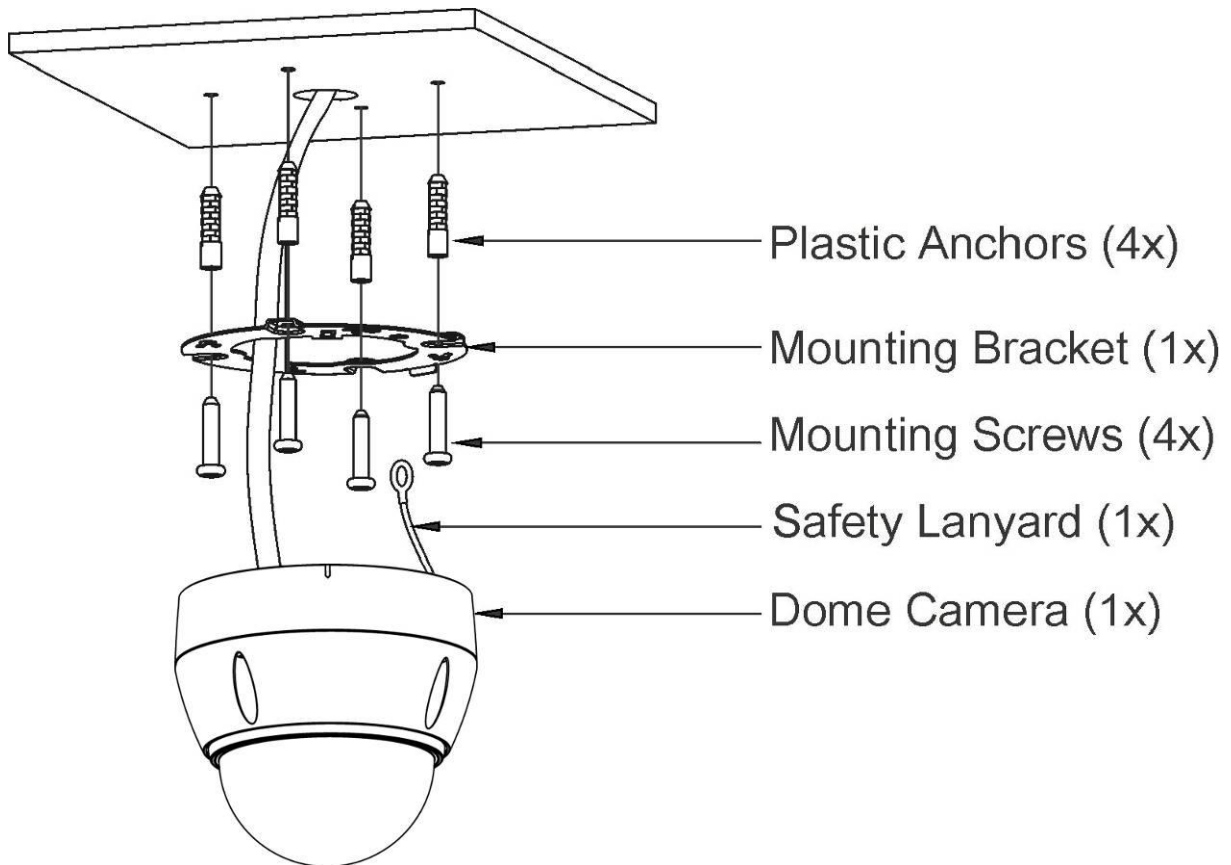


## 2. Installation

### 2.1 Installation

The dome camera is for use in surface or pendent mounting applications, and the mounting position must be capable of supporting loads of up to 3.5 lb (1.6 kg). (Pendent mounting must use pendent mount accessory.)

The dome camera's mounting bracket should be attached to a structural object, such as hard wood, wall stud or ceiling rafter that supports the weight of the dome camera.



**CAUTION:** A silicone rubber sealant must be applied to seal the housing to secure waterproofing.

#### 2.1.1 Locking Dome Camera

A. Make screw holes on the ceiling using the supplied mounting Template Sheet (Figure A).

B. Fix the Mounting Bracket to the ceiling using supplied Anchors (4x) and Mounting Screws (4x) (Figure B).

C. Hook up the Safety Lanyard to the Safety Lanyard Hook of the Mounting Bracket (Figure C).

D. Align the locking tab on the bracket and the locking slot on the base of the dome (Figure D).

E. Turn the dome to the counterclockwise about 10 degree to the locked position (Figure E).

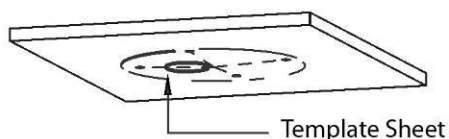


Figure A

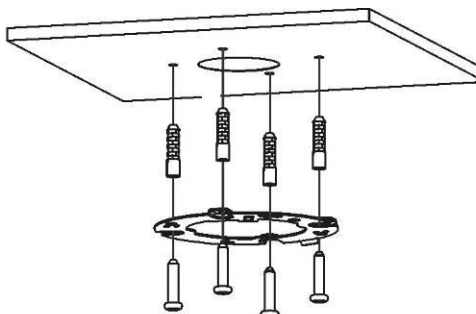


Figure B

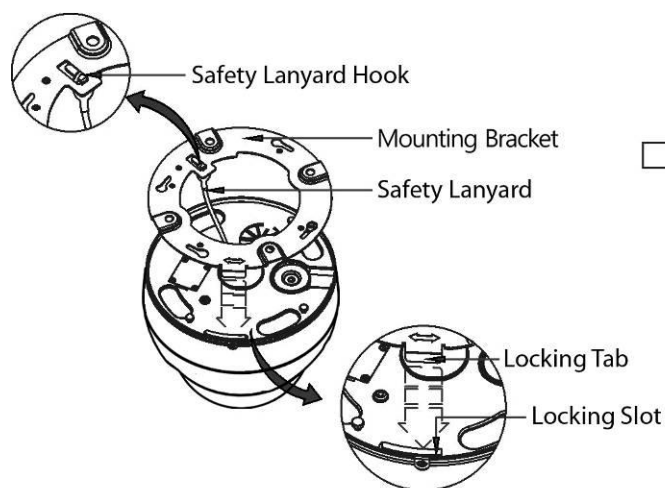


Figure C

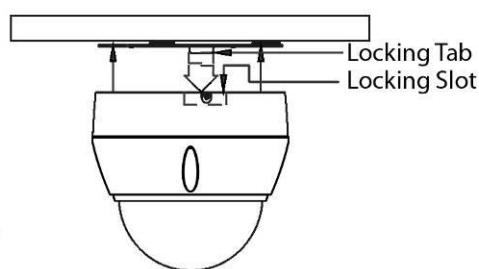


Figure D

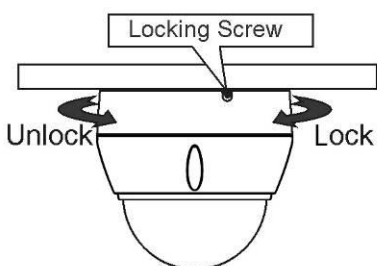


Figure E

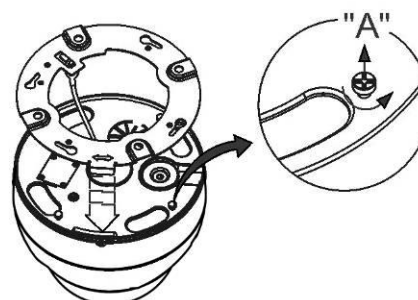
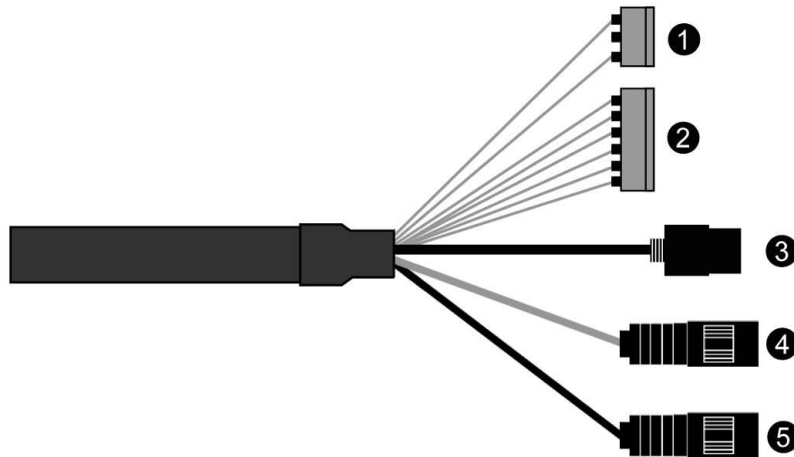


Figure F

**CAUTION:** Before installing mounting bracket to surface pre-adjust the four mounting screws "A" on the base of the dome camera to best match the mounting bracket locked position. Unscrew the locking screw on the side of the dome's base and fit the tab of the mounting bracket into the locking slot. Screws "A" should not be too tight or too loose when the dome is in the locked position.

After setting the proper positions of screws "A" remove the mounting bracket and install it to the proper surface. If it is too difficult to lock the dome in position after the mounting bracket has been installed readjust the screws "A" by unscrewing them a small amount and try to install dome camera again.

## 2.2 Basic Configuration of Camera System



No.	Connector	Wire Color	Description
1	3-pin terminal block	RED	24VAC or 12VDC+
		WHITE	24VAC or 12VDC-
2	6-pin terminal block	PINK	GND
		GRAY	ALARM INPUT
		BROWN	GND
		YELLOW	ALARM OUTPUT
		GREEN	RS485+
		BLUE	RS485-
3	RJ-45	BLACK	Ethernet, RJ-45 port compatible with 10/100Mbps having PoE functionality.
4	STEREO	GRAY	AUDIO OUTPUT
5	STEREO	BLACK	AUDIO INPUT

The camera must be installed by qualified service personnel in accordance with all local electrical and building codes.

## 2.3 Connections

- **Connecting the Network**

Connect a standard RJ-45 cable to the network port of the camera. Generally a cross-over cable is used for directly connection to PC, while a direct cable is used for connection to a hub.

- **Connecting Alarms**

- **AI (Alarm Input)**

You can use external devices to signal the camera to react on events. Mechanical or electrical switches can be wired to the AI (Alarm Input) and G (Ground) connectors.

- **G (Ground)**

**NOTE: All the connectors marked G or GND are common.**

Connect the ground side of the alarm input and/or alarm output to the G (Ground) connector.

- **AO (Alarm Output)**

The camera can activate external devices such as buzzers or lights. Connect the device to the AO (Alarm Output) and G (Ground) connectors.

- **Connecting to the RS485**

The camera can be controlled remotely by an external device or control system, such as a control keyboard, using RS485 half-duplex serial communications signals.

- **Connecting the Power**

Connect power of 12VDC or 24VAC 1.5A for the camera.

When using a 12VDC adapter, connect the positive (+) pole to the '+' position and the negative (-) pole to the '-' position.

Use satisfy clause 2.5 of IEC60950-1/UL60950-1 or Certified/Listed Class 2 power source only.

- Be careful not to reverse the polarity when you connect the power cable.

- You can also use a router featuring PoE (Power over Ethernet) to supply power to the camera.

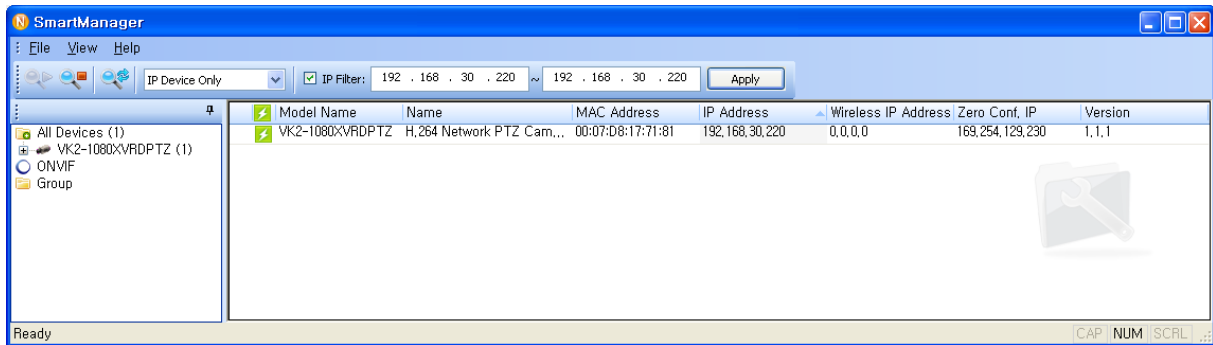
- If PoE and 12VDC are both applied, this camera will get supplied with power from PoE.

- 24VAC is recommended to use for the camera power for stable operation with heater kit. If using PoE, the heater will not operate at all.

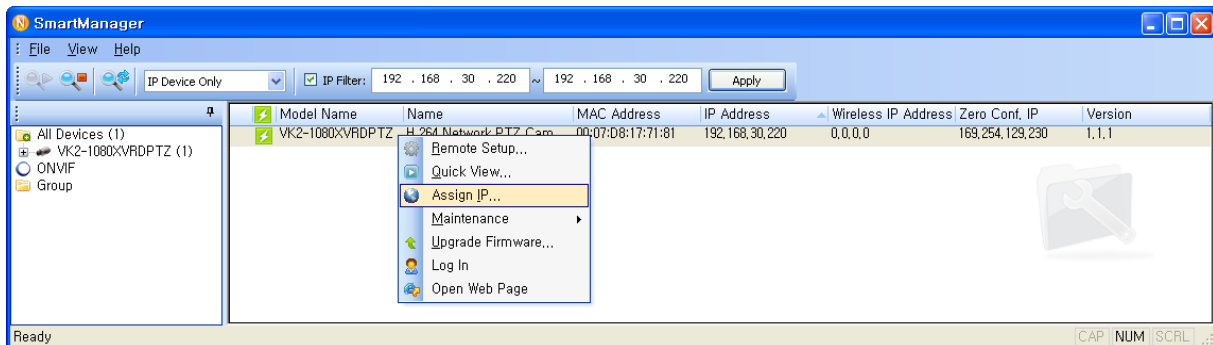
## 2.4 Network Connection & IP assignment

The camera supports the operation through the network. When a camera is first connected to the network, it is necessary to allocate an IP address to the device with the “SmartManager” utility on the CD. (Default IP 192.168.30.220)

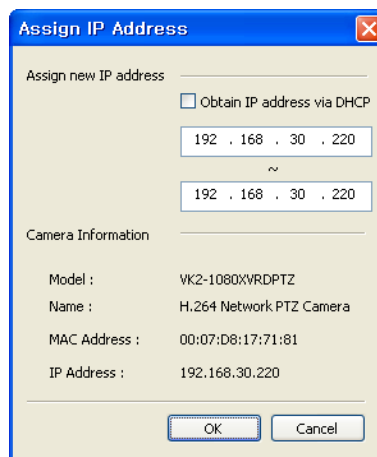
- 1) Connect the network camera/device to the network and power up.
- 2) Start SmartManager utility (Start > All programs > SmartManager > SmartManager). The main window will display, and after a short while any network devices connected to the network will be displayed in the list.



- 3) Select the camera on the list and click right button of the mouse. You can see the pop-up menu as below.



- 4) Select Assign IP Address. The Assign IP window will display. Enter the required IP address.



**NOTE:** For more information, refer to the SmartManager User’s Manual.



### 3. Operation

The network camera can be used with Windows® operating system and browsers. The recommended browsers are Internet Explorer®, Safari®, Firefox®, Opera™ and Google® Chrome® with Windows.

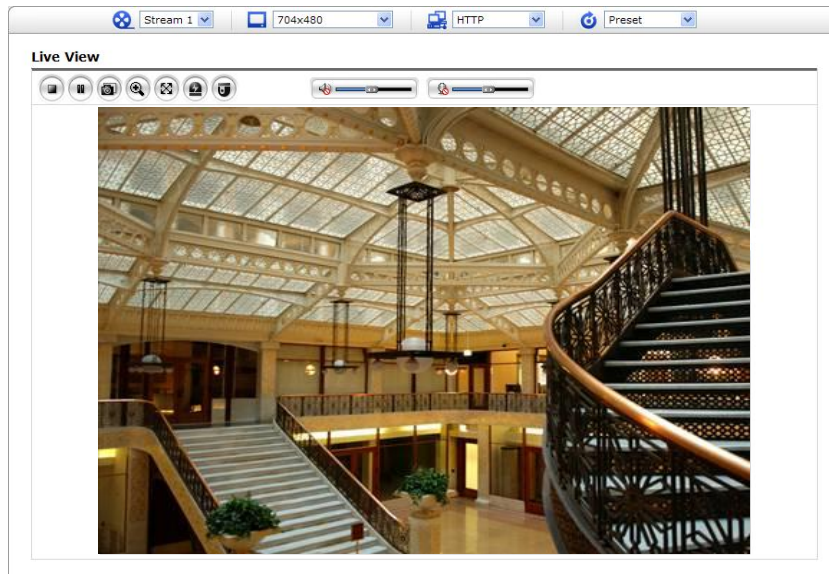
**NOTE:** To view streaming video in Microsoft Internet Explorer, set your browser to allow ActiveX controls.

#### 3.1 Access from a browser

- 1) Start a browser (Internet Explorer).
- 2) Enter the IP address or host name of the network camera in the Location/Address field of your browser.
- 3) You can see a starting page. Click **Live View** or **Setup** to enter web page.



- 4) The network camera's **Live View** page appears in your browser.

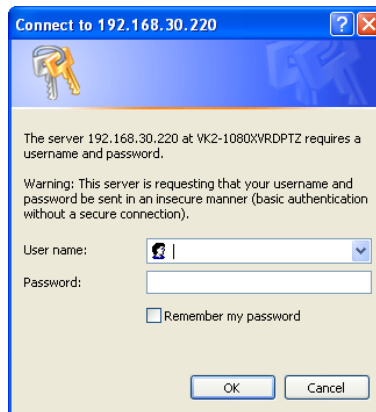


### 3.2 Access from the internet

Once connected, the network camera is accessible on your local network (LAN). To access the network camera from the Internet you must configure your broadband router to allow incoming data traffic to the network camera. To do this, enable the NAT traversal feature, which will attempt to automatically configure the router to allow access to the network camera. This is enabled from Setup > System > Network > NAT. For more information, please see “3.5.7 System > Network > NAT” of User's Manual.

### 3.3 Setting the admin password over a secure connection

To gain access to the product, the password for the default administrator user must be set. This is done in the “Admin Password” dialog, which is displayed when the network camera is accessed for the setup at the first time. Enter your admin name and password, set by the administrator.



**NOTE:** The default administrator user name and password is “admin”. If the password is lost, the network camera must be reset to the factory default settings. Please see “Resetting to the factory default settings”.

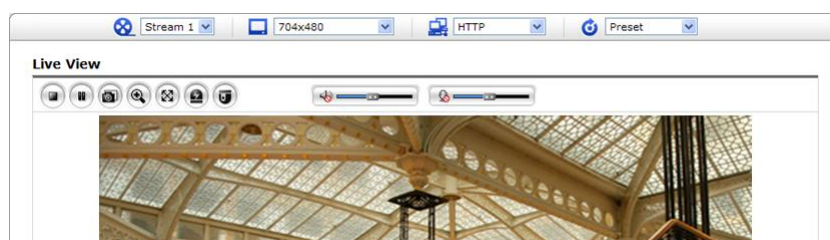
To prevent network eavesdropping when setting the admin password, this can be done via an encrypted HTTPS connection, which requires an HTTPS certificate (see **NOTE** below).

To set the password via a standard HTTP connection, enter it directly in the first dialog shown below. To set the password via an encrypted HTTPS connection, please see “3.5.7 System > Security > HTTPS” of User's Manual.

**NOTE:** HTTPS (Hypertext Transfer Protocol over SSL) is a protocol used to encrypt the traffic between web browsers and servers. The HTTPS certificate controls the encrypted exchange of information.

### 3.4 Live View Page

The Live View page comes in several screen modes: 1920x1080, 1280x1024, 1280x720, 704x576, 704x480, 640x480 and 320x240. Users are allowed to select the most suitable one out of those modes. Adjust the mode in accordance with your PC specifications and monitoring purposes.



## 1) General controls



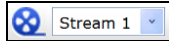
Live View Page



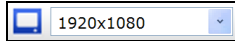
Setup Page



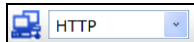
Help Page



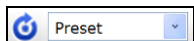
The video drop-down list allows you to select a customized or pre-programmed video stream on the Live View page. Stream profiles are configured under Setup > Basic Configuration > Video & Image. For more information, please see “3.5.1 Basic Configuration > Video & Image” of User’s Manual.



The resolution drop-down list allows you to select the most suitable one out of video resolutions to be displayed on Live View page.



The protocol drop-down list allows you to select which combination of protocols and methods to use depending on your viewing requirements, and on the properties of your network.



The preset drop-down list allows you to select the preset number for the PTZ camera being used. This icon is inactivated if the PTZ settings are not set.

## 2) Control toolbar

The live viewer toolbar is available in the web browser page only. It displays the following buttons:



The **Stop** button stops the video stream being played. Pressing the key again toggles the start and stop. The **Start** button connects to the network camera or starts playing a video stream.



The **Pause** button pauses the video stream being played.



The **Snapshot** button takes a snapshot of the current image. The location where the image is saved can be specified.



The **Digital Zoom** button activates a zoom-in or zoom-out function for video image on the live screen.



The **Full Screen** button causes the video image to fill the entire screen area. No other windows will be visible. Press the 'Esc' button on the computer keyboard to cancel full screen view.



The **Manual Trigger** button activates a pop-up window to manually start or stop the event.



The **PTZ** button activates a pop-up window for Pan, Tilt and Zoom control.



Use this scale to control the volume of the speakers.



Use this scale to control the volume of the microphone.



Use this scale to control the volume of the speakers and microphones.

## 3) Video Streams

The network camera provides several images and video stream formats. Your requirements and the properties of your network will determine the type you use.

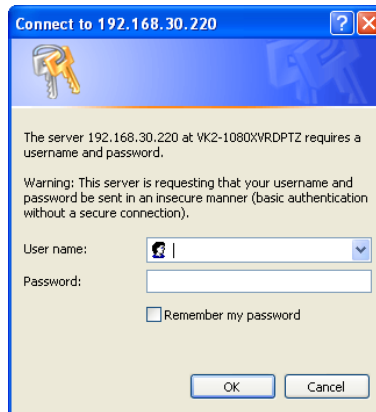
The Live View page in the network camera provides access to H.264 and Motion JPEG video streams, and to the list of available video streams. Other applications and clients can also access these video streams/images directly, without going via the Live View page.

### 3.5 Network Camera Setup

This section describes how to configure the network camera, and is intended for product Administrators, who have unrestricted access to all the Setup tools; and Operators, who have access to the settings for Basic Configuration, Live View, Video & Image, Audio, Event, Dome Configuration, System

You can configure the network camera by clicking Setup in the top right-hand corner of the Live View page. Click on this page to access the online help that explains the setup tools.

When accessing the network camera for the first time, the “Admin Password” dialog appears. Enter your admin name and password, set by the administrator.



**NOTE:** If the password is lost, the network camera must be reset to the factory default settings. Please see “Resetting to the Factory Default Settings”.

### Resetting to the factory default settings

To reset the network camera to the original factory settings, go to the Setup > System > Maintenance web page (described in “3.5.7 System > Maintenance” of User’s Manual) or use the **Reset** button on the network camera, as described below:

#### • Using the Reset button:

Follow the instructions below to reset the network camera to the factory default settings using the Reset button.

1. Switch off the network camera by disconnecting the power adapter.
2. Press and hold the Reset button (SW1) on the board with your finger while reconnecting the power.
3. Keep the Reset button (SW1) pressed for about 2 seconds.
4. Release the Reset button (SW1).
5. The network camera resets to factory defaults and restarts after completing the factory reset.

**CAUTION:** When performing a Factory Reset, you will lose any settings that have been saved. (Default IP 192.168.30.220)

## **System Requirement for Web Browser**

- **Operating System:** Microsoft Windows OS Series
- **CPU:** Intel Core 2 Duo 2Ghz or higher, 1GB RAM or more, 10GB free disk or higher
- **VGA:** AGP, Video RAM 32MB or higher (1024x768, 24bpp or higher)

## **General Performance Considerations**

When setting up your system, it is important to consider how various settings and situations will affect performance. Some factors affect the amount of bandwidth (the bit rate) required, others can affect the frame rate, and some affect both. If the load on the CPU reaches its maximum, this will also affect the frame rate.

The following factors are among the most important to consider:

- High image resolutions and/or lower compression levels (or high bitrates) result in larger images. Frame rate and Bandwidth affected.
- Accessing both Motion JPEG and H.264 video streams simultaneously. Frame rate and bandwidth affected.
- Heavy network utilization due to poor infrastructure. Frame rate and Bandwidth affected.
- Heavy network utilization via wireless router due to poor infrastructure. Frame rate and bandwidth affected.
- Viewing on poorly performing client PCs lowers perceived performance. Frame rate affected.

## **More Information**

For more information, please see the network camera User's Manual, which is available on the CD included in this package.



NORBAIN SD LTD  
210 Wharfedale Road  
IQ Winnersh  
Wokingham  
Berkshire.  
RG41 5TP

(Subject to change without notice)

50303568A