



VIP2

VK2-1080VFD



Installation Guide

WARNING

TO REDUCE THE RISK OF FIRE OR ELECTRIC SHOCK, DO NOT EXPOSE THIS PRODUCT TO RAIN OR MOISTURE. DO NOT INSERT ANY METALLIC OBJECT THROUGH THE VENTILATION GRILLS OR OTHER OPENINGS ON THE EQUIPMENT.

CAUTION



EXPLANATION OF GRAPHICAL SYMBOLS



The lightning flash with arrowhead symbol, within an equilateral triangle, is intended to alert the user to the presence of un-insulated "dangerous voltage" within the product's enclosure that may be of sufficient magnitude to constitute a risk of electric shock.



The exclamation point within an equilateral triangle is intended to alert the user to the presence of important operating and maintenance (servicing) instructions in the literature accompanying the appliance.

PRECAUTIONS

Safety ----- Installation -----

Should any liquid or solid object fall into the cabinet, unplug the unit and have it checked by the qualified personnel before operating it any further.

Unplug the unit from the wall outlet if it is not going to be used for several days or more. To disconnect the cord, pull it out by the plug. Never pull the cord itself.

Allow adequate air circulation to prevent internal heat build-up. Do not place the unit on surfaces (rugs, blankets, etc.) or near materials (curtains, draperies) that may block the ventilation holes.

Height and vertical linearity controls located at the rear panel are for special adjustments by qualified personnel only.

Do not install the unit in an extremely hot or humid place or in a place subject to excessive dust, mechanical vibration.

The unit is not designed to be waterproof. Exposure to rain or water may damage the unit.

Cleaning -----

Clean the unit with a slightly damp soft cloth. Use a mild household detergent. Never use strong solvents such as thinner or benzene as they might damage the finish of the unit.

Retain the original carton and packing materials for safe transport of this unit in the future.

CAUTION: CHANGES OR MODIFICATIONS NOT EXPRESSLY APPROVED BY THE PARTY RESPONSIBLE FOR COMPLIANCE COULD VOID THE USER'S AUTHORITY TO OPERATE THE EQUIPMENT.

CE COMPLIANCE STATEMENT

WARNING: This is a Class A product. In a domestic environment this product may cause radio interference in which case the user may be required to take adequate measures.

Contents

- 1. Description 6**

- 2. Installation 8**
 - 2.1 Base installation8
 - 2.2 Connection9
 - 2.2 Network Connection and IP assignment10

- 3. Operation.....11**
 - 3.1 Minimum conditions for using web browser11
 - 3.2 Accessing the IP camera11

- 4.0 Main Menu12**
 - 4.1 LIVE VIEW13
 - 4.2 Upgrading the Firmware14
 - 4.3 General Troubleshooting15

1. Description

This manual applies to the VK2-1080VFD network camera.

The VK2-1080VFD is fully featured for security surveillance and remote monitoring needs. It is based on the DSP compression chip, and makes it available on the network as real-time, full frame rate Motion JPEG and H.264 (or MPEG-4) video streams.

The alarm input and alarm output can be used to connect various third party devices, such as, door sensors and alarm bells.

- **Installation Steps**

Follow these steps to install the Network Transmitter on your local network (LAN):

1. Check the package contents against the list below.
2. Connect the Camera. See page 5.
3. Set an IP address. See page 7.
4. Set the password. See page 9.

- **Package Component**

The system comes with the following components:



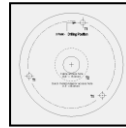
Camera unit



Installation CD



Installation Guide



Template Sheet



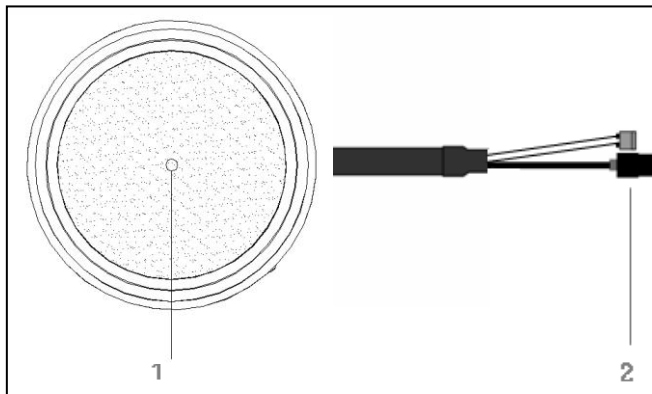
Accessory Kit

- **Contents in the installation CD**

1. The VK2-1080VFD Full manual
2. VIP2 client software
3. SmartManager set up Utility

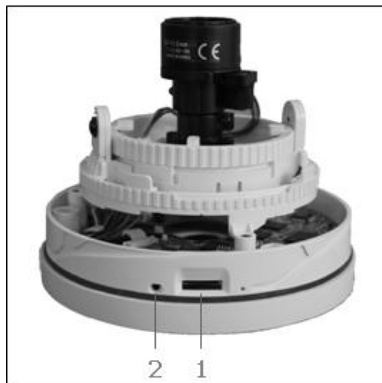
Note: Check your package to make sure that you received the complete system, including all components shown above.

- **Front View**

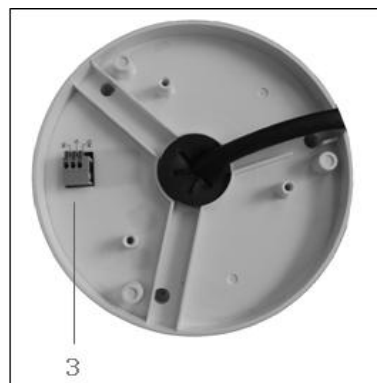


NO	Name	Description
1	Lens	3-9mm varifocal IR corrected lens
2	Connection Cable	IP and Power connection cable

- **Side View**

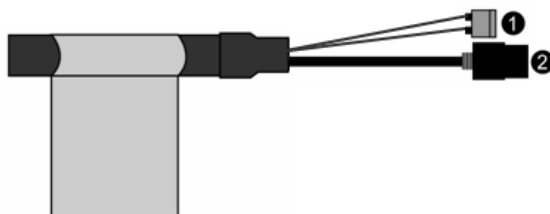


- **Bottom View**



NO	Name	Description
1	Micro SD Slot	Micro SD slot for local recording
2	Status LED	Amber : On while System Booting Green : Normal Operation
3	Alarm IO Terminal	AI: Alarm Input, G: Ground, AO: Alarm Output

- **Extension Cable**

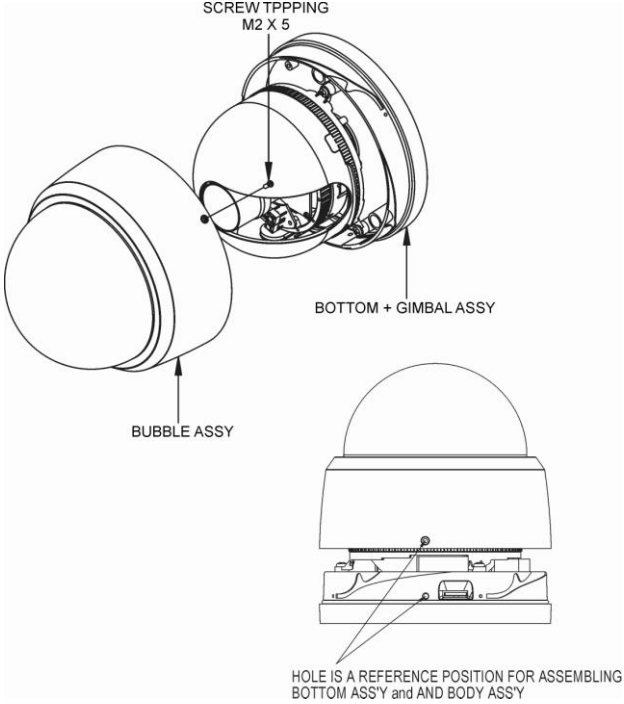


NO	Wire Colour	Description
1	Red: DC12V White: GND	Main Power, 2pin terminal, DC12V 330mA(4.0W)
2	Black	Ethernet, RJ-45 port compatible with 10/100Mbps PoE. Modular Jack

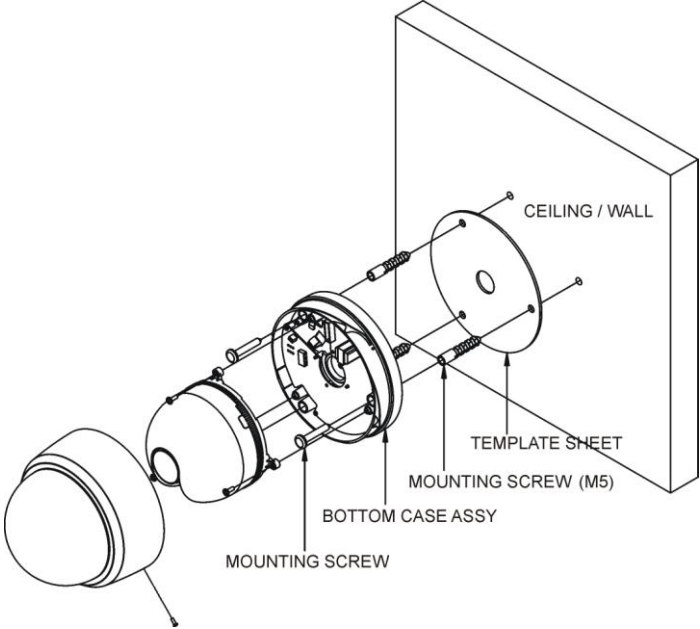
2. Installation

2.1 Base installation

Use the provided template to mark the required mounting and cable holes.



To remove dome cover, turn the dome cover counter clockwise until locators reach end of travel and pull off. Push the liner in the direction of the arrow (three 'OPEN' marks) and pull it off.



Fasten Mounting screws (2X) and align the dome camera as shown above. Turn the dome camera in a clockwise direction to lock it in position.

Secure the dome cover with the locking screw provided.

2.2 Connection

- **Connecting to the RJ-45**

Connect a standard RJ-45 cable to the network port of the network camera. Generally a cross-over cable is used for directly connection to PC, while a direct cable is used for connection to a switch or hub.

- **Connecting Alarms**

AI(Alarm In) :

You can use external devices to signal the VK2-1080VFD to react on events. Mechanical or electrical switches can be wired to the AI (Alarm In) and G (Ground) connectors in the bottom.

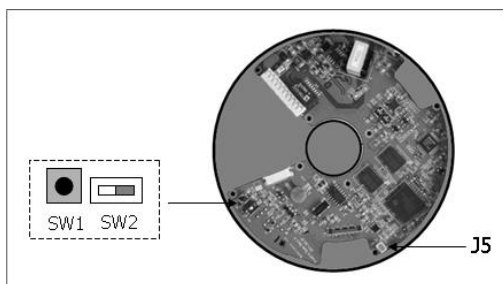
G(Ground) :

Connect the ground side of the alarm input and/or alarm output to the G (Ground) connector.

Alarm Out :

The VK2-1080VFD can activate external devices such as buzzers or lights. Connect the device to the AO (Alarm Out) and G (Ground) connectors.

- **Connecting Video Output for set up only**



Video Output is used for an easy zoom and focus control when commissioning the camera. Set Video Switch (SW2 on the board) to On position to output the video signal. Video Output is restricted to VGA(640x480) resolution.

Connect your Video cable unit to J5 on the board, as shown on the adjacent illustration.

Caution: After the camera has been focused, you must set Video Switch SW2 to the OFF position to provide the best performance of the Network Camera.

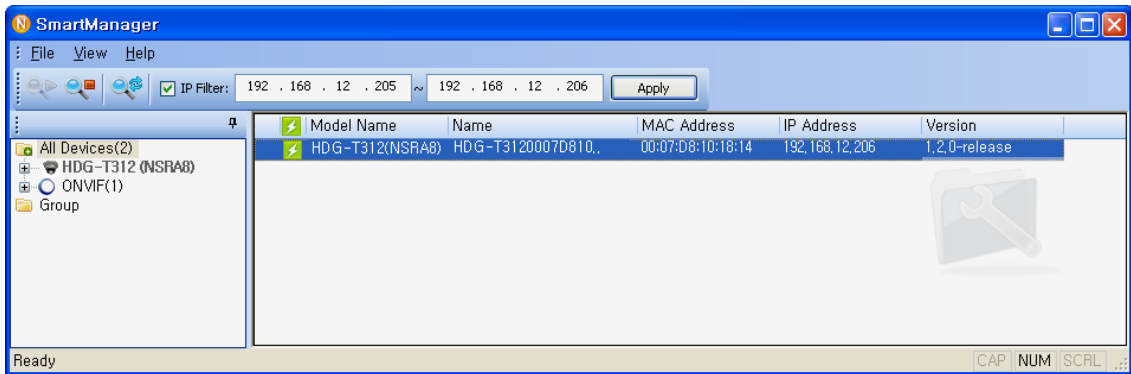
- **Connecting the Power (If not using PoE)**

Connect the power of 12VDC 330mA for the camera. Connect the positive (+) pole to the '+' position and the negative (-) pole to the '-' position.

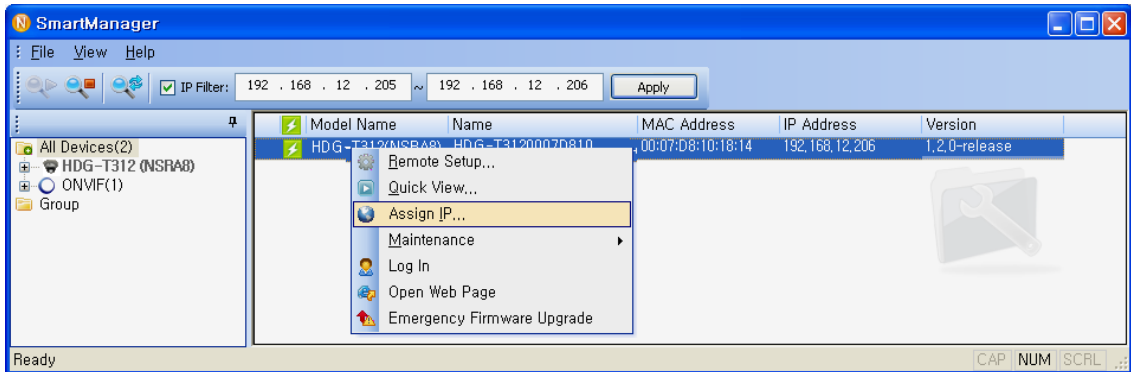
2.2 Network Connection and IP assignment

When a VK2-1080VFD is first connected to the network it has a default IP address of 192.168.30.220. So, it will probably be necessary to allocate an IP address to the device with the “Smart Manager” utility on the CD.

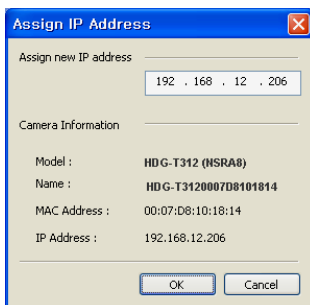
1. Connect the VK2-1080VFD / device to the network and power up.
2. Start SmartManager utility, available on the supplied CD, the main window will be displayed, after a short while any network devices connected to the network will be displayed in the list.



3. Select the camera on the list and right click the mouse. You will see the pop-up menu as below.



4. Enter the appropriate IP address.



Note: For more information, refer to the Smart Manger User's Manual.

3. Operation

Before powering the camera, installation must be complete. The camera completes a configuration sequence taking approximately 40 seconds from powering up. Once completed the LED will be a constant Green.

NOTES

- If the DHCP is enabled but the camera is not connected to a DHCP server, the camera will be set to a default IP address of 192.168.30.220 and will try to obtain an IP address from a DHCP server every two seconds.
- Network and processor bandwidth limitations might cause the video stream to pause or appear pixelated when an increased number of Web-interface users connect to the camera. Decrease the images per second, resolution, compression, or bit rate settings of the Web-interface video streams to compensate for network or processor limitations.

3.1 Minimum conditions for using web browser

The minimum system requirements to use a Web browser with this IP camera are as follows:

- CPU: Pentium® 4 microprocessor, 2.0GHz
- Operational System: Windows XP® or Windows Vista® or Windows7®
- System Memory: RAM 512 Mbyte
- Ethernet: 100 Mbit
- Video Resolution: 1024(Horizontal) x 768(Vertical) pixels or higher
- Internet Explorer® 7 or later
- ActiveX® 1.0.0.13 or later

3.2 Accessing the IP camera

1. Open Web browser
2. Type IP address: - The default IP address is **192.168.30.220**

NOTE

- If you do not know the camera's IP address, install the SmartManager® utility software available on the CD supplied with the product. The utility software will locate the assigned Model name, Host name, MAC address, IP address, Version and others.
- Refer to the SmartManager® utility software manual for more detail.

3. Log On to the camera

Default User = admin, default password = admin

- Click the Live View icon for default live image view or the Setup icon to change the configuration values.

4.0 Main Menu



[Main Menu]

The dialog box will be appears.

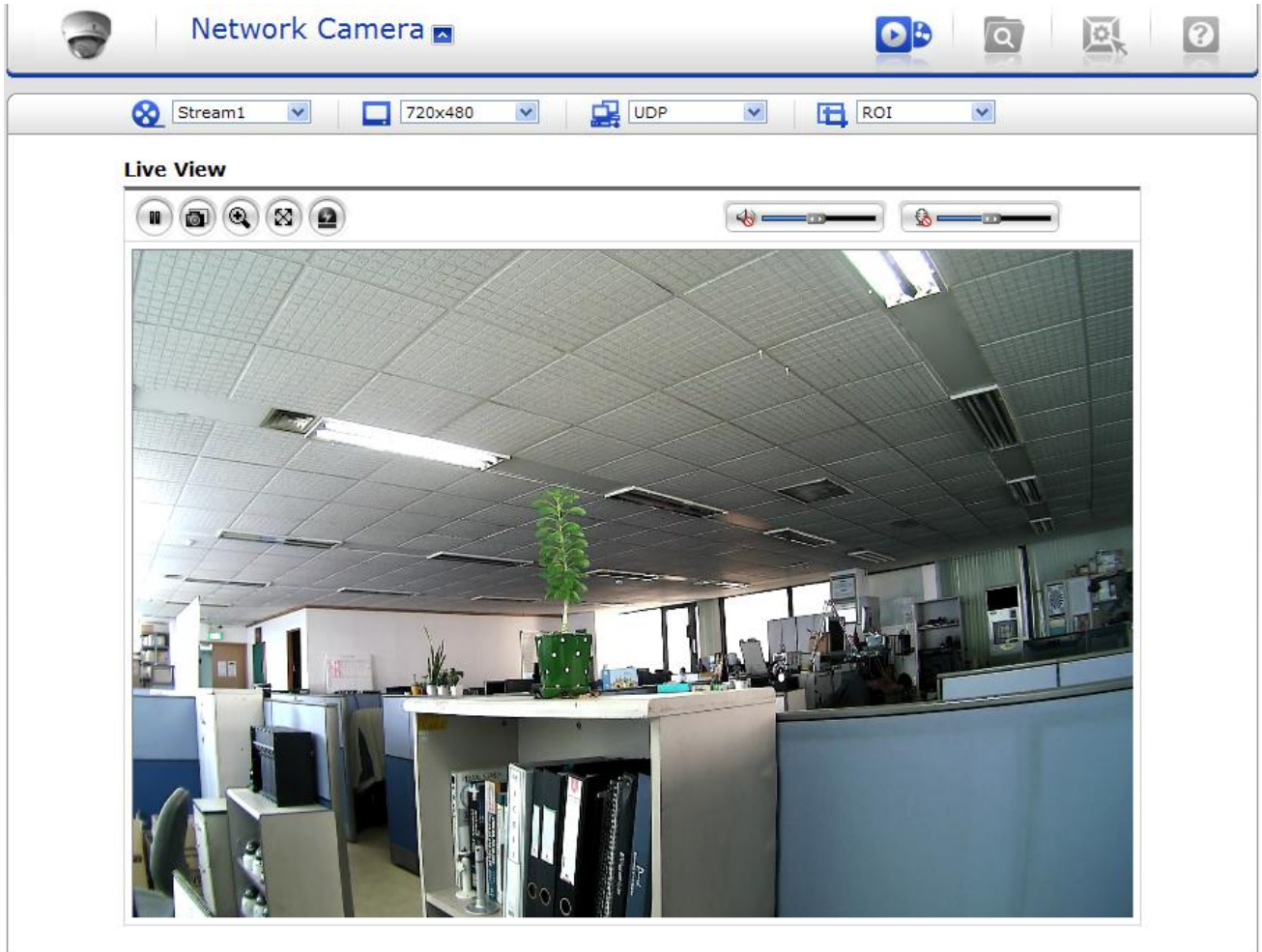
- Type User ID and Password in the dialog box. The default User ID and Password are ***admin.***

NOTE

For security purposes, be sure to change the password after you log on for the first time.




4.1 LIVE VIEW


The Live View page provides you to select the properties of video source. You can view the live image from this page and also access the Setup menu and operate the main functions.





[Main Live View Page]

Live Video Page Icons


- Hide Main Icons: Hides main icons in the live view page.
- Show Main Icons: Shows main icons in the live view page.
-  Live view: Displays live video stream.
-  Playback View: Enters playback menu. Required Micro SD card (not supplied)
-  Setup: Enters setup menu.


 Help: Shows helpful information.


 Source: Specify the viewable video stream source to display in live view page.


 View Size: Specify the viewable video size to display in live view page.


 Stream Type: Specify the internet protocol to display in live view page.


 ROI View: Specify the specially selected area to transfer using different stream feature in the primary video image. ROI is an abbreviation for “Region of Interest”.


 Preset: Specify the Preset. This icon is inactivated if the PTZ settings are not set.


 Pause: Pause the live video stream.


 Snapshot: Take a picture of the video image currently on display. Supports the origin image size view, Print, and Save feature.

 Digital Zoom: Supports a digital zoom in live video image.

 Full Screen: Expands video image to the entire screen area.

 Manual Trigger: Activates the Alarm Out signalling manually.

 Speaker: Adjusts the volume of Speaker and switch the sound on / off.

 Microphone: Adjusts the volume of Microphone and switch the sound on / off.

If you suspect a problem is being caused by incorrect configuration or some other minor problem, consult the troubleshooting guide below.

4.2 Upgrading the Firmware

Firmware is software that determines the functionality of the network camera. One of your first actions when troubleshooting a problem should be to check the current firmware. The latest version may contain a correction that fixes your particular problem. The current

firmware version in your camera is displayed on the Basic Configuration or About. For the latest firmware of the camera, please contact with your product administrator.

Detailed instructions on how to perform the upgrade process are provided with each new release. See also the Maintenance/ Upgrade for more information.

4.3 General Troubleshooting

The following list covers some of the problems that may be encountered and suggests how to remedy them:

1. The camera cannot be accessed by some clients.

→ If using a proxy server, try disabling the proxy setting in your browser. Check all cabling and connectors.

2. The camera works locally, but not externally.

→ Check if there are firewall settings that need to be adjusted. Check if there are router settings that need to be configured.

3. Poor or intermittent network connection.

→ If using a network switch, check that the port on that device uses the same setting for the network connection type (speed/duplex).

4. The camera cannot be accessed via a host name.

→ Check that the host name and DNS server settings are correct.

5. Not possible to log in.

→ When HTTPS is enabled, ensure that the correct protocol (HTTP or HTTPS) is used. When attempting to log in, you may need to manually type in http or https in the browser's address bar.

6. No image using Refresh and/or slow updating of images.

→ If images are very complex, try limiting the number of clients accessing the camera.

7. Images only shown in black & white.

→ Check the Video & Image setting.

8. Blurred images.

→ Refocus the camera.

9. Poor image quality.

→ Increased lighting can often improve image quality. Check that there is sufficient lighting at the monitored location. Check all image and lighting settings.

10. Rolling dark bands or flickering in image.

→ Try adjusting the Exposure Control setting under AE and AWB part.

11. H.264 not displayed in the client.

→ Check that the correct network interface is selected in the Video & Image/Stream.

12. Multicast H.264 not displayed in the client.

→ Check with your network administrator that the multicast addresses used by the camera are valid for your network. Check that the Enable multicast checkbox are enabled in the System/Network/RTP tab. Checks with your network administrator to see if there is a firewall preventing viewing.

13. Multicast H.264 only accessible by local clients.

→ Check if your router supports multicasting, or if the router settings between the client and the server need to be configured. The TTL value may need to be increased.

14. Colour saturation is different in H.264 and Motion JPEG.

→ Modify the settings for your graphics adapter. Please see the adapter's documentation for more information.

15. Poor audio quality.

→ Too many users/clients connected to the camera may affect the sound quality adversely. Try limiting the number of clients allowed to connect.

16. Distorted audio.

→ Check that the correct Audio Input source is selected. Select Microphone for a connected external microphone. Select Line for a connected line in source.

NOTE

If you cannot find the help you require, please see the User's Manual, or contact with your network administrator.