



# VK2

VK2-1080MD37PTW



Quick guide

***Please read this manual thoroughly before use, and keep it handy for future reference.***

**WARNING**

TO REDUCE THE RISK OF FIRE OR ELECTRIC SHOCK, DO NOT EXPOSE THIS PRODUCT TO RAIN OR MOISTURE. DO NOT INSERT ANY METALLIC OBJECT THROUGH THE VENTILATION GRILLS OR OTHER OPENINGS ON THE EQUIPMENT.

**CAUTION**



**EXPLANATION OF GRAPHICAL SYMBOLS**



The lightning flash with arrowhead symbol, within an equilateral triangle, is intended to alert the user to the presence of un-insulated "dangerous voltage" within the product's enclosure that may be of sufficient magnitude to constitute a risk of electric shock.



The exclamation point within an equilateral triangle is intended to alert the user to the presence of important operating and maintenance (servicing) instructions in the literature accompanying the appliance.

**PRECAUTIONS**

**Safety ----- Installation -----**

Should any liquid or solid object fall into the cabinet, unplug the unit and have it checked by the qualified personnel before operating it any further.

Unplug the unit from the wall outlet if it is not going to be used for several days or more. To disconnect the cord, pull it out by the plug. Never pull the cord itself.

Allow adequate air circulation to prevent internal heat build-up. Do not place the unit on surfaces (rugs, blankets, etc.) or near materials (curtains, draperies) that may block the ventilation holes.

Do not install the unit in an extremely hot or humid place or in a place subject to excessive dust, mechanical vibration.

The unit is not designed to be waterproof. Exposure to rain or water may damage the unit.

**Cleaning -----**

Clean the unit with a slightly damp soft cloth. Use a mild household detergent. Never use strong solvents such as thinner or benzene as they might damage the finish of the unit.

Retain the original carton and packing materials for safe transport of this unit in the future.

**CAUTION: CHANGES OR MODIFICATIONS NOT EXPRESSLY APPROVED BY THE PARTY RESPONSIBLE FOR COMPLIANCE COULD VOID THE USER'S AUTHORITY TO OPERATE THE EQUIPMENT.**

**CE COMPLIANCE STATEMENT**

**WARNING: This is a Class A product. In a domestic environment this product may cause radio interference in which case the user may be required to take adequate measures.**

# 1. Description

This manual applies to the VK2-1080MD37PTW mini dome camera with Pan/Tilt function.

These cameras are fully featured for security surveillance and remote monitoring needs. They are based on the DSP compression chip, allowing real-time, full frame rate Motion JPEG and H.264 (or MPEG-4) video streams.

The camera can also connect wirelessly to the VK2-REC04HDW Wi-fi NVRs.

## 1.1 Components

The system comes with the following components:



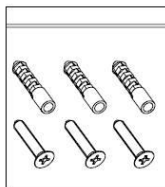
**Camera Unit**



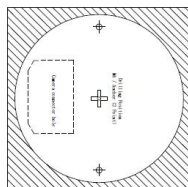
**Installation CD**



**Installation Guide**



**Accessory Kit**

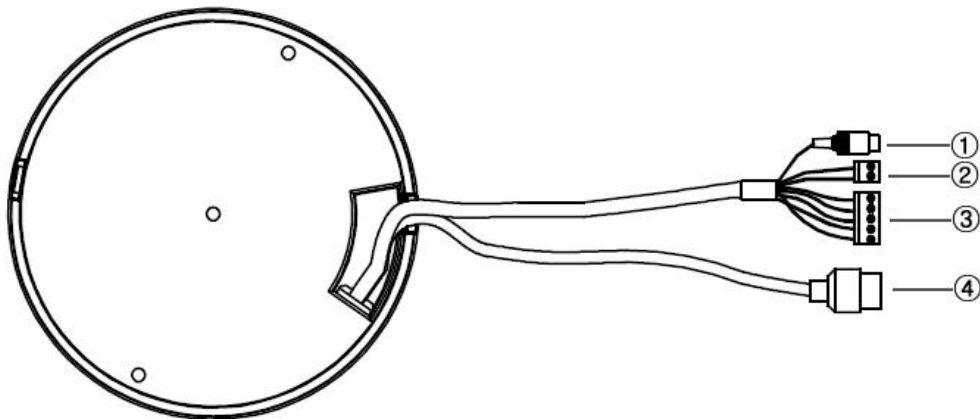


**Template sheet**

**Note 1:** Check your packaging to make sure that you received the complete system, including all components shown above.

**Note 2:** Adapter for DC 12V is not supplied.

## 1.2 Layout



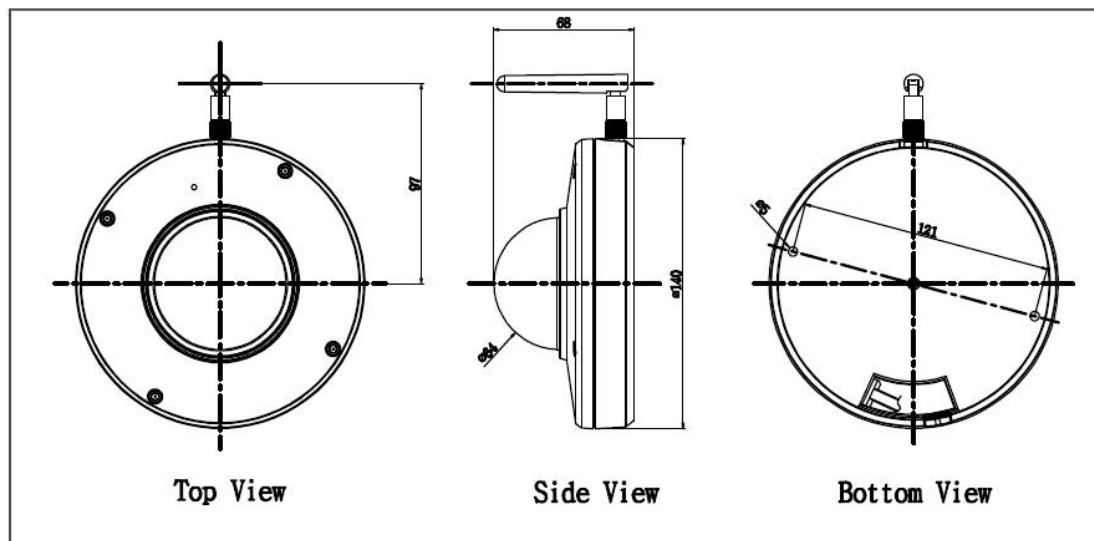
- **Connection Cable**

NO	Wire Color	Description
1	Grey	Audio line output, RCA Jack
2	Red: DC12V White: GND	Main Power, 2pin terminal
3	Blue: GND Grey: ALARM INPUT Brown: GND Yellow : ALARM OUT	Alarm input and out put connections
4	Black	Ethernet, RJ-45 port compatible with 10/100Mbps having PoE functionality.

- **Camera Dimension**

See the diagrams below for the exact dimension

### VK2-1080MD37PTW



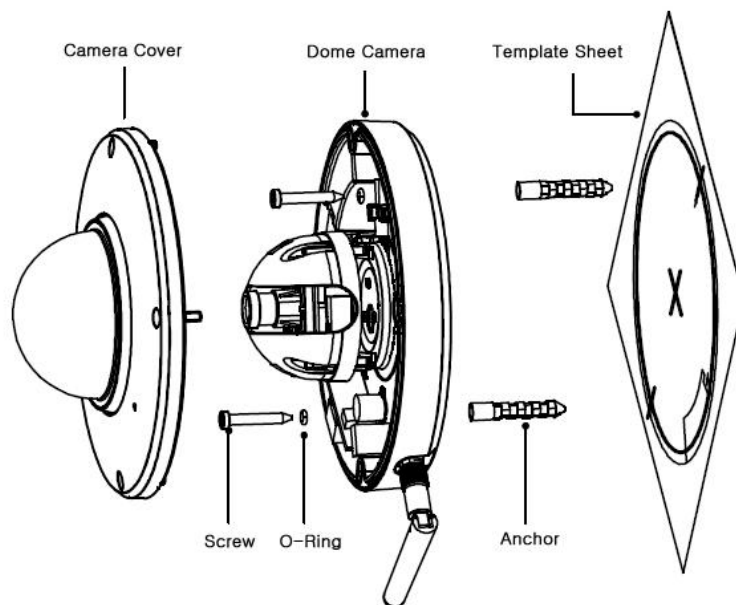
Dimensions Unit: mm

## 2. Installation

- **Camera Installation**

Carefully remove the contents from the box, and verify that nothing was damaged in shipment.

- 1) Make screw holes for camera using the template sheet supplied
- 2) Remove the Camera Cover
- 3) Fix the camera using the anchors(2x) and screws(2x) provided.



- **Connecting to the RJ-45**

Connect a standard RJ-45 cable to the network port of the network camera. Generally a cross-over cable is used for directly connection to PC, while a direct cable is used for connection to a switch

- **Micro SD memory slot**

Insert the SD memory card.

- **Connecting the Power ( If not using PoE)**

Connect the DC 12V power adaptor to the camera.

- **Connecting the Wireless using WPS function.**

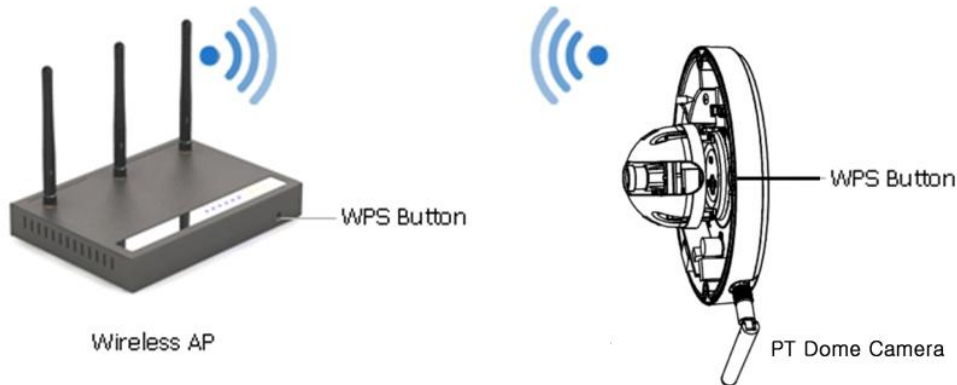
Follow steps for a proper operation.

1. Make sure your AP (Access Point) and Operating System support WPS (Wi-Fi Protected Setup) functions. WPS enables easy setup with compatible APs.
2. Press the WPS button on the camera board. You can then see the Status LED is blinking.

4. Press and hold down the WPS button on your AP (some router/AP will have a virtual button on their management software instead). Refer to your AP's documentation for details using its WPS functions

When WPS configuration is done, wireless connectivity will be established and the security encryption, such as WEP or WPA-PSK, will be synchronized with the AP.

As for IP setting, the camera's use of DHCP or static IP is determined by your configuration on the network camera via the web- based configuration of firmware. The camera's default is DHCP for the VIP2P1N.



Notes:

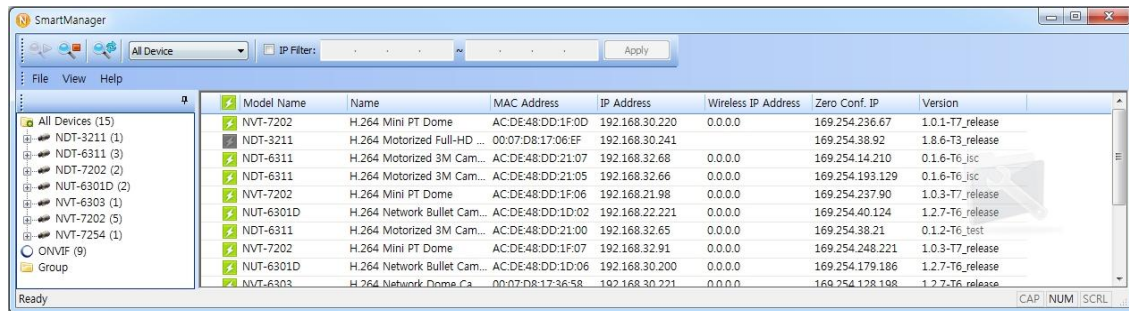
1. WPS may not work if your AP is configured with a "hidden" SSID.
2. If any WPS-enabled AP is not detected, the camera will search APs for 60 seconds after pressing the WPS button, and if the camera still can not detect an AP after 1 minute, the wireless setup will be cancelled.
3. If a camera is assigned with a fixed IP outside the AP's network segment, wireless setup will fail.
4. A wired connection always has a higher priority, and hence wireless setup will not take effect when the RJ45 LAN port is connected.



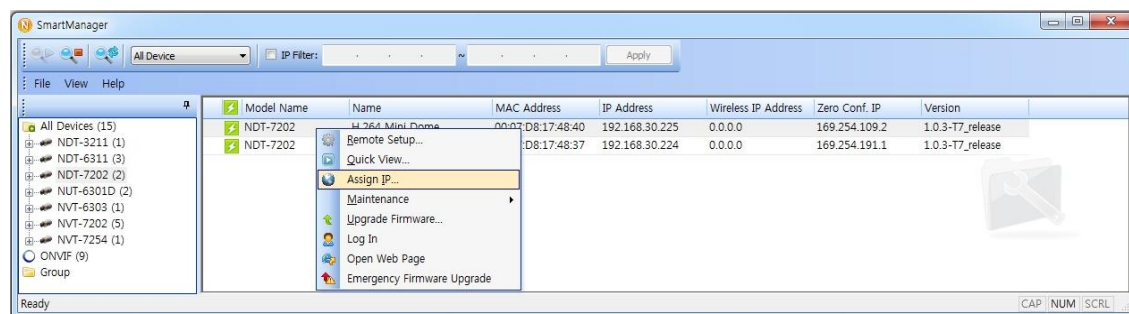
## 2.2 Network Connection and IP assignment

The Network Camera supports the operation through the network. When a camera is first connected to the network it has no IP address. So, it is necessary to allocate an IP address to the device with the “Smart Manager” utility on the CD. (Default IP 192.168.30.220)

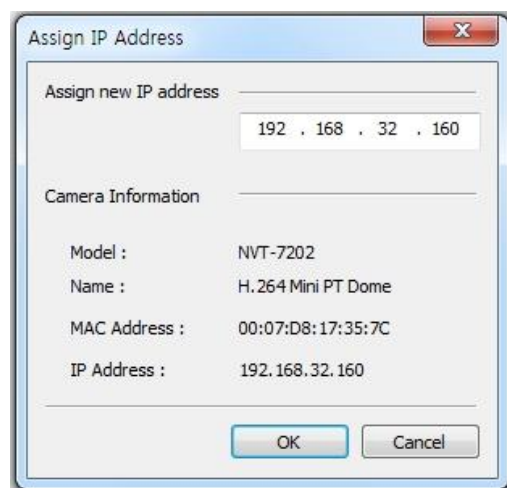
1. Connect the Network Camera / device to the network and power up.
2. Start SmartManager utility (Start>All programs>SmartManager>SmartManager), the main window will be displayed, after a short while any network devices connected to the network will be displayed in the list.



3. Select the camera on the list and click right button of the mouse. You can see the pop-up menu below.



4. Select Assign IP. You can see a Assign IP window. Enter the required IP address.



**Note:** For more information, refer to the Smart Manger User’s Manual.

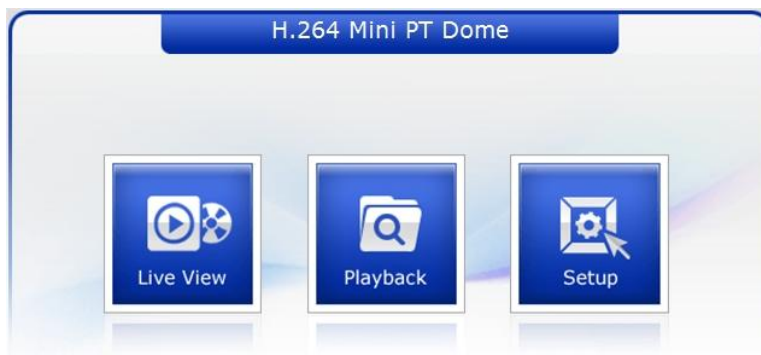
### 3. Operation

The Network Camera can be used with Windows operating system and browsers. The recommended browsers are Internet Explorer, Safari, Firefox, Opera and Google Chrome with Windows.

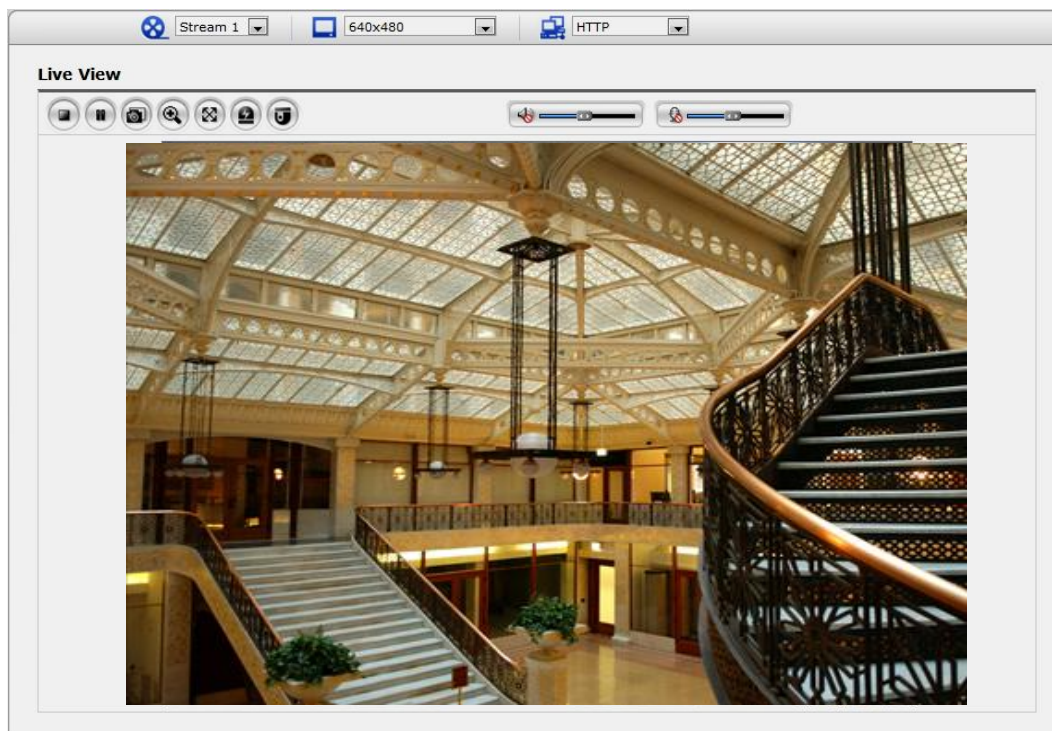
**Note:** To view streaming video in Microsoft Internet Explorer, set your browser to allow ActiveX controls.

#### 3.1 Access from a browser

1. Start a browser (Internet Explorer).
2. Enter the IP address or host name of the Network Camera in the Location/Address field of your browser.
3. You can see a starting page. Click Live View or Setup to enter web page.



4. The network camera's **Live View** page appears in your browser.



### 3.2. Access from the internet

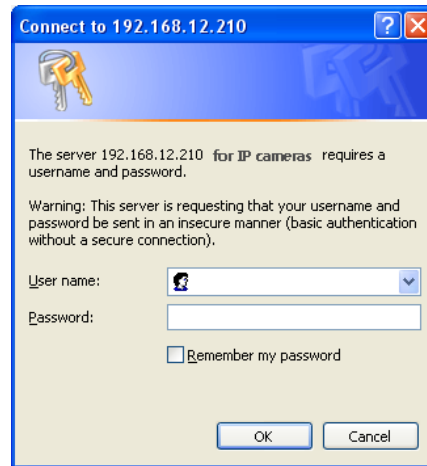
Access from the internet once connected, the Network Camera is accessible on your local network (LAN). To access the network camera from the Internet you must configure your broadband router to allow incoming data traffic to the network camera. To do this, enable the NAT-traversal feature, which will attempt to automatically configure the router to allow access to the network camera. This is enabled from Setup > System > Network > NAT.

For more information, please see “3.5.5 System>Network>NAT” of User’s Manual.

### 3.3 Setting the admin password over a secure connection

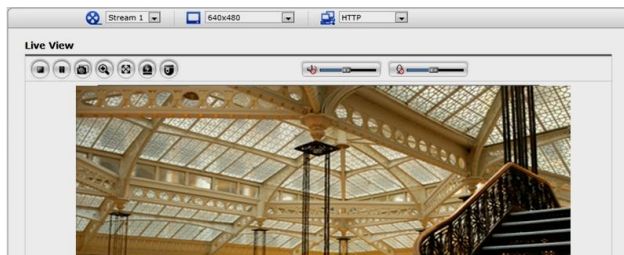
To gain access to the product, the password for the default administrator user must be set. This is done in the “Admin Password” dialog, which is displayed when the network camera is accessed for the setup at the first time. Enter your admin name and password, set by the administrator.

Note: The default administrator username is admin and password is admin. If the password is lost, the Network Camera must be reset to the factory default settings. See “3.6 Resetting to the Factory Default Settings”.

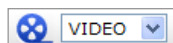
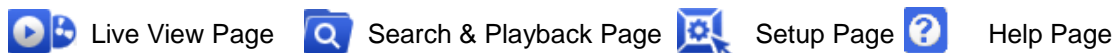


### 3.4 Live View Page

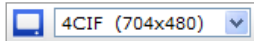
The live view page comes in several screen modes: 1600x1200, 1280x1024, 1280x720, 800x600, 704x480(576), 640x480, 352x240(288) and 320x240. Users are allowed to select the most suitable one out of those modes. Please, adjust the mode in accordance with your PC specifications and monitoring purposes.



#### 1) General controls



The video drop-down list allows you to select a customized or pre-programmed video stream on the live view page. Stream profiles are configured under Setup > Basic Configuration > Video & Image. For more information, please see “3.5.1 Basic Configuration > Video & Image” of User’s Manual













The resolution drop-down list allows you to select the most suitable one out of video resolutions to be displayed on live view page.



The protocol drop-down list allows you to select which combination of protocols and methods to use depends on your viewing requirements, and on the properties of your network.

## 2) Control toolbar

The live viewer toolbar is available in the web browser page only. It displays the following buttons:

-  The Stop button stops the video stream being played. Pressing the key again toggles the start and stop. The Start button connects to the network camera or start playing a video stream.
-  The Pause button pause the video stream being played.
-  The Snapshot button takes a snapshot of the current image. The location where the image is saved can be specified.
-  The digital zoom activates a zoom-in or zoom-out function for video image on the live screen.
-  The Full Screen button causes the video image to fill the entire screen area. No other windows will be visible. Press the 'Esc' button on the computer keyboard to cancel full screen view.
-  The Manual Trigger button activates a pop-up window to manually start or stop the event.
-  The PT button activates a pop-up window for Pan, Tilt and Zoom control.
-  Use this scale to control the volume of the speakers.
-  Use this scale to control the volume of the microphone.
-  Use this scale to control the volume of the speakers and microphones.

## 3) Video Streams

The network camera provides several images and video stream formats. Your requirements and the properties of your network will determine the type you use.

The Live View page in network camera provides access to H.264, MPEG-4 and Motion JPEG video streams, and to the list of available video streams. Other applications and clients can also access these video streams/images directly, without going via the Live View page.

### 3.5 Network Camera Setup

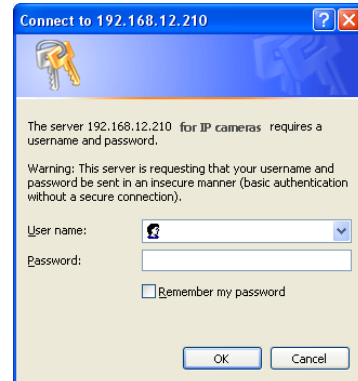
This section describes how to configure the network camera, and is intended for product Administrators, who have unrestricted access to all the Setup tools; and Operators, who have access to the settings for Basic, Live View, Video & Image and System Configuration.

You can configure the network camera by clicking Setup in the top right-hand corner of the Live View page. Click on this page to access the online help that explains the setup tools

When accessing the Network Camera for the first time, the “Admin Password” dialog appears. Enter your admin name and password, set by the administrator.

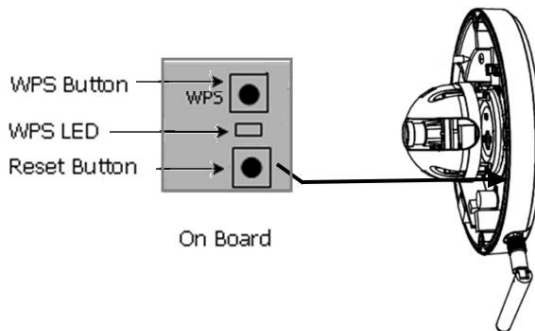
Note: If the password is lost, the Network Camera must be reset to the factory default settings.

See “3.6 Resetting to the Factory Default Settings”.



### 3.6 Resetting to the factory default settings

To reset the Network Camera to the original factory settings, go to the Setup>System> Maintenance web page or use the Reset button on the network camera, as described below:



- **Using the Reset Button**

Follow the instructions below to reset the Network Camera to the factory default settings using the Reset button.

1. Switch off the Network Camera by disconnecting the power adapter.
2. Press and hold the Reset button with a straightened paperclip while reconnecting the power.
3. Keep the Reset button pressed during about 2 seconds.
4. Release the Reset button.
5. The network camera resets to factory defaults and restarts after completing the factory reset.

**Caution:** When performing a Factory Reset, you will lose any settings you have saved.  
(Default IP 192.168.30.220)

### **3.7 More Information**

For more information, please see the Network Camera User's Manual, which is available on the CD included in this package.



---

Printed in Korea