



# VIP2

VK2-1080VFD3V9F



Quick Guide



# 1. Description

This manual applies to the VK2-1080VFD3V9 network camera.

The VK2-1080VFD3V9F camera is designed for internal applications. It's Full HD video images offer excellent quality. The Motorised remote set up lens guarantees sharp images throughout the day and night.

Please read the following manual before installing the camera.

- **Installation Steps**

Follow these steps to install the camera on your local network (LAN):

1. Check the package contents against the list below.
2. Connect the Network Camera. See page 3.
3. Set an IP address. See page 5.
4. Set the password. See page 7.

- **Package Component**

The system comes with the following components:



Camera unit



Installation CD



Installation Guide



Template Sheet



Accessory Kit



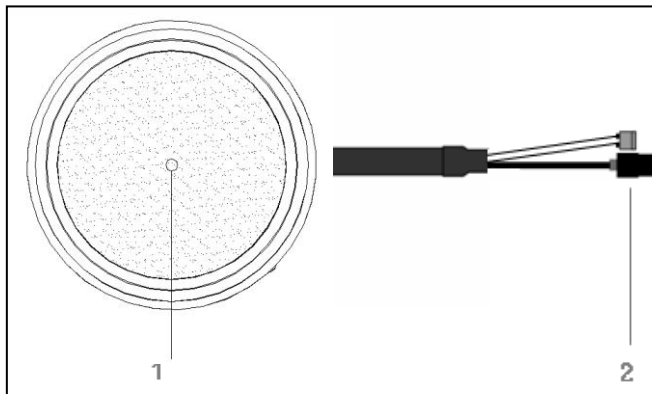
Optional OSD Controller

- **Contents on the installation CD**

1. Camera User's Manual
2. VK2-Client User's Manual
3. The Smart Manager User's Manual
4. VK2-Client Installation software
5. The Smart Manager Installation software

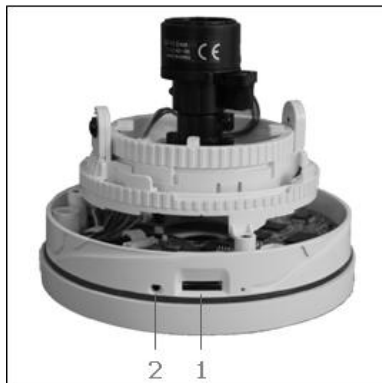
**Note:** Check your package to make sure that you received the complete system, including all components shown above.

- **Front View**

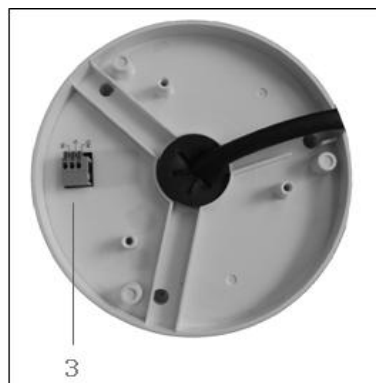


NO	Name	Description
1	Lens	Allows wide area to be monitored
2	Extension Cable	Power and IP connectors

- **Side View**

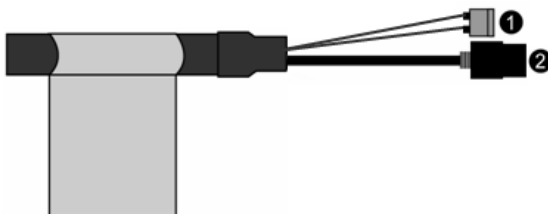


- **Bottom View**



NO	Name	Description
1	Micro SD Slot	Micro SD slot for local recording
2	Status LED	Amber : On System Booting Green : Normal Operation
3	Alarm IO Terminal	AI: Alarm Input, G: Ground, AO: Alarm Output

- **Extension Cable**



NO	Wire Colour	Description
1	Red: DC12V White: GND	Main Power, 2pin terminal, DC12V 500mA(6.0W)
2	Black	Ethernet, RJ-45 port compatible with 10/100Mbps PoE. Modular Jack

## 2. Installation

### 2.1 Connection

- **Connecting to the RJ-45**

Connect a standard RJ-45 cable to the network port of the network camera. Generally a cross-over cable is used for directly connection to PC, while a direct cable is used for connection to a hub.

- **Connecting Alarms**

**AI(Alarm In) :**

You can use external devices to signal the VK2-1080VFD3V9 to react on events. Mechanical or electrical switches can be wired to the AI (Alarm In) and G (Ground) connectors in the bottom.

**G(Ground) :**

Connect the ground side of the alarm input and/or alarm output to the G (Ground) connector.

**Alarm Out :**

The VK2-1080VFD3V9 can activate external devices such as buzzers or lights. Connect the device to the AO (Alarm Out) and G (Ground) connectors.

- **Connecting Alarms**

**AI(Alarm In) :**

You can use external devices to signal the dome camera to react on events. Mechanical or electrical switches can be wired to the AI (Alarm In) and G (Ground) connectors.

**G(Ground) :**

Connect the ground side of the alarm input and/or alarm output to the G (Ground) connector.

**AO(Alarm Out) :**

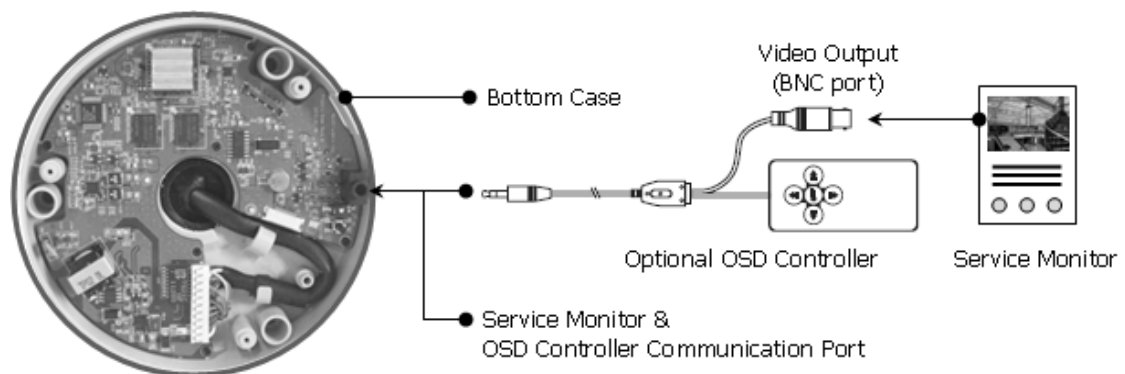
The dome camera can activate external devices such as buzzers or lights. Connect the device to the AO (Alarm Out) and G (Ground) connectors.

- **Connecting the Power**

Connect the power of DC12V 500mA for the network camera. Connect the positive(+) pole to the '+' position and the negative(-) pole to the '-' position.

- **Connecting Service Monitor Port**

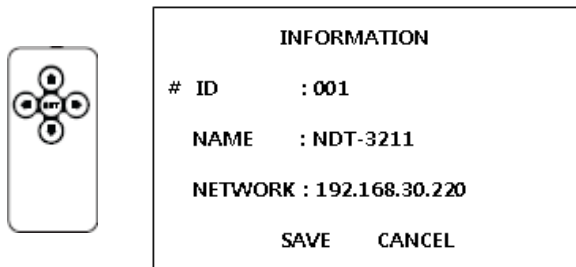
Service monitor output port (J5) is located on the board of the dome camera, and is used for an easy OSD setup.



## ► ID & IP assignment

To make changes in the OSD menu, please the OSD controller provided optionally with your camera purchase. You can set Camera Title and IP Address.

1. Connect the OSD Controller to the Service Monitor port of the network camera.
2. Connect Service Monitor and the Video Output port of the OSD Controller.
3. Press the SET button to access main Menu.
4. Change Camera ID, and IP Address. You can change the Name or Title and IP address of the camera. Using the ↑↓←→ buttons on the controller, you can change the parameters.
5. Select SAVE or CANCEL to exit the Main Menu.



Video Output is used for an easy zoom and focus control when installing lens. Video Output is restricted to 704x480(576) resolution.

## ► Zoom & Focus Control

The camera enters Zoom and Focus control mode as soon as connecting OSD Controller to the Service Monitor port.

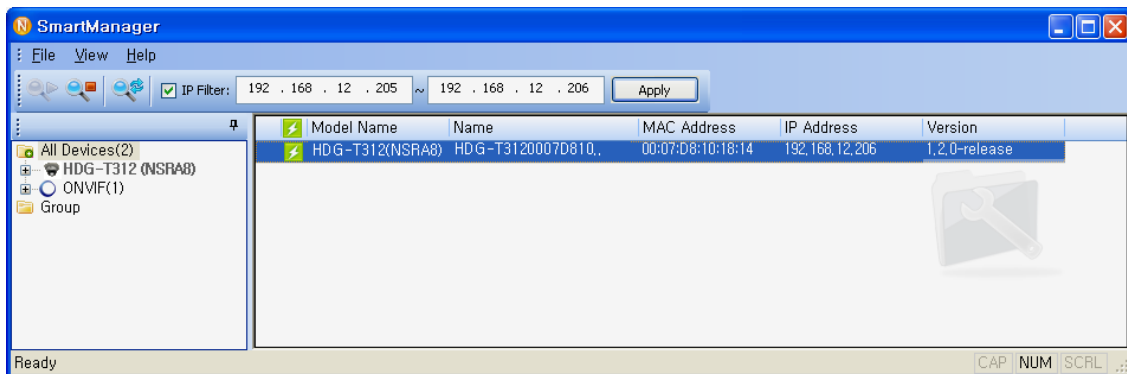
- Zoom Control: ↑(Zoom In), ↓(Zoom Out)
- Focus Control: ←(Focus Near), →(Focus Far)
- Smart Focus: Press and hold the SET button for 2 or more seconds. The camera readjusts focus automatically.

**Note:** You can get the Optional OSD Controller from Norbain SD Ltd.

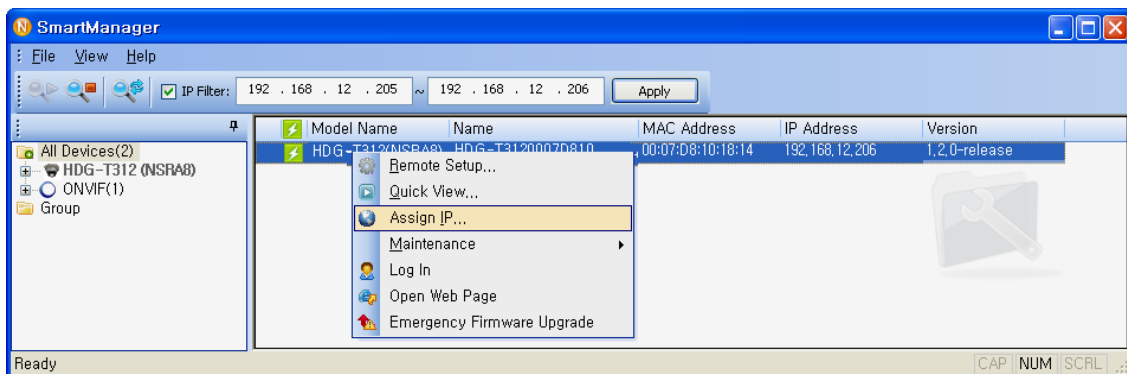
## 2.2 Network Connection and IP assignment

The VK2-1080VFD3V9 supports the operation through the network. When a camera is first connected to the network it has no IP address. So, it is necessary to allocate an IP address to the device with the "Smart Manager" utility on the CD. The factory default IP is "192.168.30.220".

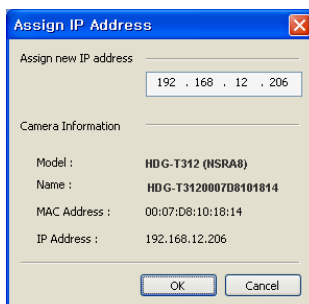
1. Connect the VK2-1080VFD3V9 to the network and power up.
2. Start SmartManager utility (Start>All programs>Smart Manager>SmartManager), the main window will be displayed, after a short while any network devices connected to the network will be displayed in the list.



3. Select the camera on the list and click right button of the mouse. You can see the pop-up menu as below.



4. Select Assign IP. You can see a Assign IP window. Enter the required IP address.



**Note:** For more information, refer to the Smart Manger User's Manual.

### 3. Operation

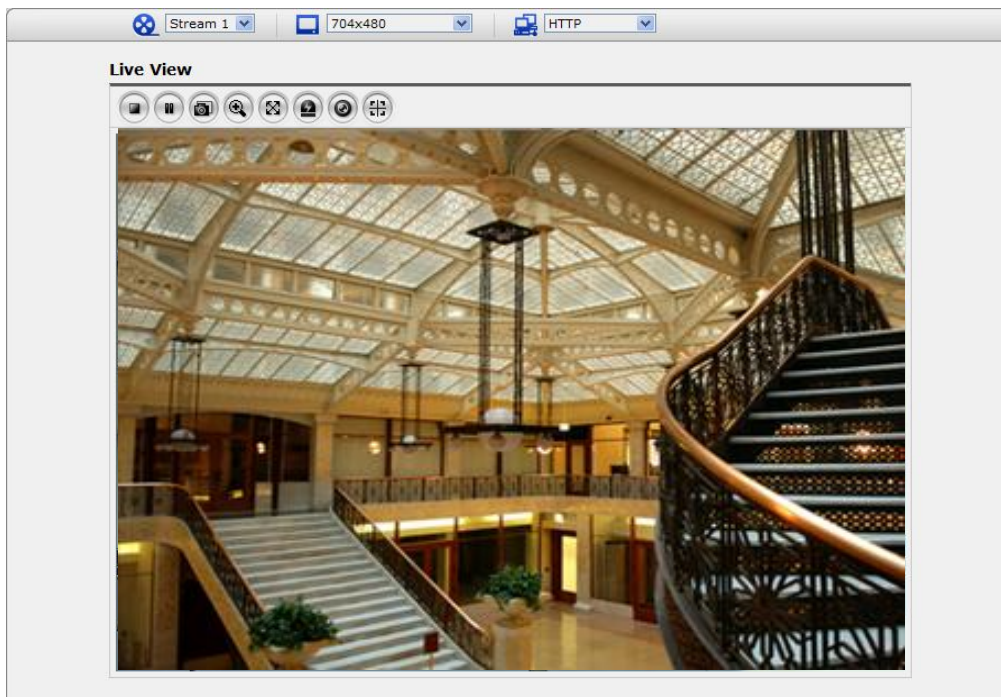
The VK2-1080VFD3V9 can be used with Windows operating system and browsers. The recommended browsers are Internet Explorer, Safari, Firefox, Opera and Google Chrome with Windows.

#### 3.1 Access from a browser

1. Start a browser (Internet Explorer).
2. Enter the IP address or host name of the VK2-1080VFD3V9 in the Location/Address field of your browser.
3. You can see a starting page. Click Live View or Setup to enter web page.



4. The encoder's **Live View** page appears in your browser.





## 3.2. Access from the internet

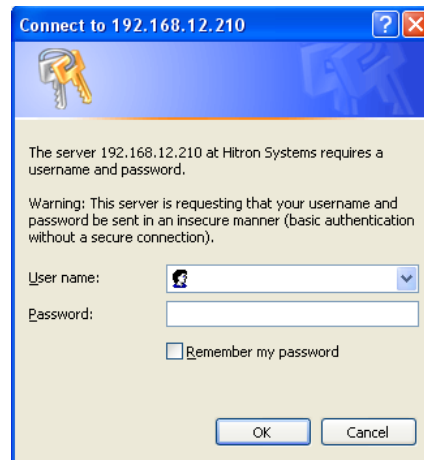
Access from the internet Once connected, the VK2-1080VFD3V9 is accessible on your local network (LAN). To access the video encoder from the Internet you must configure your broadband router to allow incoming data traffic to the video encoder. To do this, enable the NAT-traversal feature, which will attempt to automatically configure the router to allow access to the video encoder. This is enabled from Setup > System > Network > NAT.

For more information, please see "3.5.4 System>Network>NAT" of User's Manual.

## 3.3 Setting the admin password over a secure connection

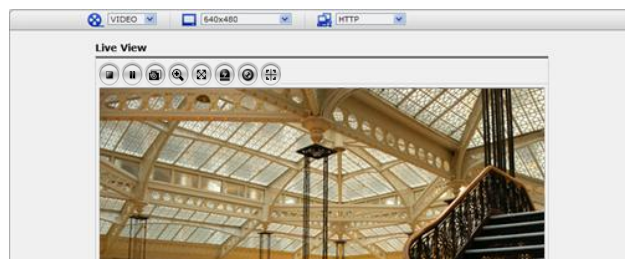
To gain access to the product, the password for the default administrator user must be set. This is done in the "Admin Password" dialog, which is displayed when the VK2-1080VFD3V9 is accessed for the setup at the first time. Enter your admin name and password, set by the administrator.

Note: The default administrator username and password is "admin". If the password is lost, the VK2-1080VFD3V9 must be reset to the factory default settings. See "3.6 Resetting to the Factory Default Settings".






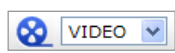
## 3.4 Live View Page

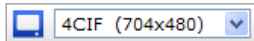
The live view page comes in several screen modes like 1920x1080, 1280x1024, 1280x720, 704x480(576), 640x480, 352x240(288), and 320x240. Users are allowed to select the most suitable one out of those modes. Please, adjust the mode in accordance with your PC specifications and monitoring purposes.



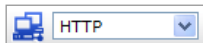
### 1) General controls

 Live View Page  Search & Playback Page  Setup Page  Help Page

 The video drop-down list allows you to select a customized or pre-programmed video stream on the live view page. Stream profiles are configured under Setup > Basic Configuration > Video & Image. For more information, please see "3.5.1 Basic Configuration > Video & Image" of User's Manual.











The resolution drop-down list allows you to select the most suitable one out of video resolutions to be displayed on live view page.



The protocol drop-down list allows you to select which combination of protocols and methods to use depends on your viewing requirements, and on the properties of your network.

## 2) Control toolbar

The live viewer toolbar is available in the web browser page only. It displays the following buttons:


-  The Stop button stops the video stream being played. Pressing the key again toggles the start and stop. The Start button connects to the VK2-1080VFD3V9 or start playing a video stream.
-  The Pause button pause the video stream being played.
-  The Snapshot button takes a snapshot of the current image. The location where the image is saved can be specified.
-  The digital zoom activates a zoom-in or zoom-out function for video image on the live screen.
-  The Full Screen button causes the video image to fill the entire screen area. No other windows will be visible. Press the 'Esc' button on the computer keyboard to cancel full screen view.
-  The Manual Trigger button activates a pop-up window to manually start or stop the event.
-  The Remote Focus button enables users to adjust focus and zoom remotely via network.
-  The Smart Focus button readjusts focus automatically.

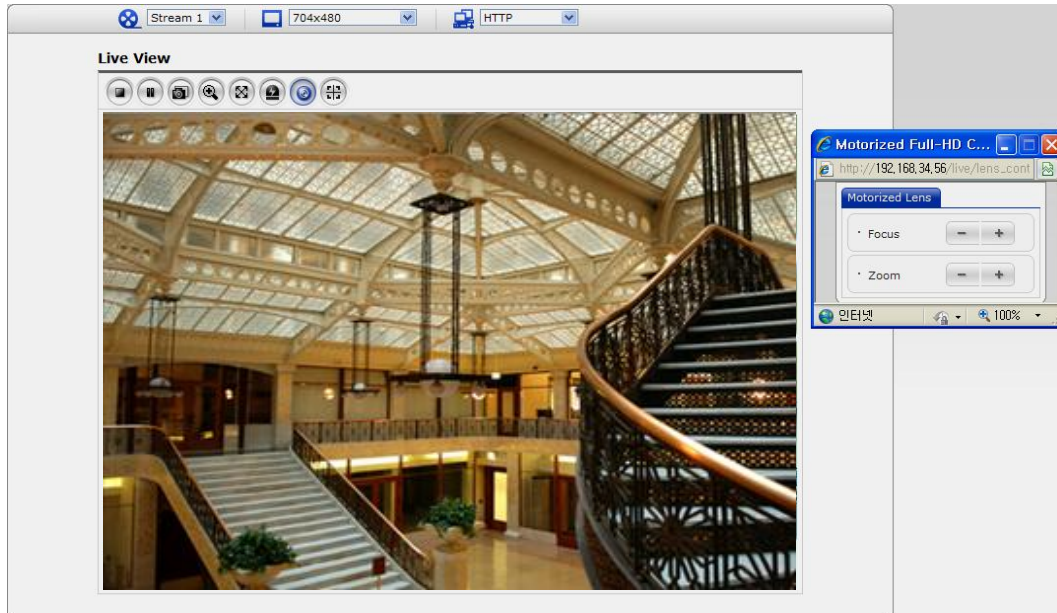
## 3) Video Streams

The video encoder provides several images and video stream formats. Your requirements and the properties of your network will determine the type you use.

The Live View page in the video encoder provides access to H.264, MPEG-4 and Motion JPEG video streams, and to the list of available video streams. Other applications and clients can also access these video streams/images directly, without going via the Live View page.

#### 4) Focus and Zoom Control

You can control Zoom and Focus in the live screen. Press the  button on the left top in the live screen to activate the Zoom & Focus control panel.



- Adjusting Zoom:  
Click "-" button to zoom out and click "+" button to zoom in.  
The focus is moved slightly after adjusting zoom; adjust the focus again, as necessary.
- Adjusting Focus:  
Click "-" button for far focus and click "+" button to near focus.

**Note:** Click the  button in the live screen to set the focus to the optimum position.

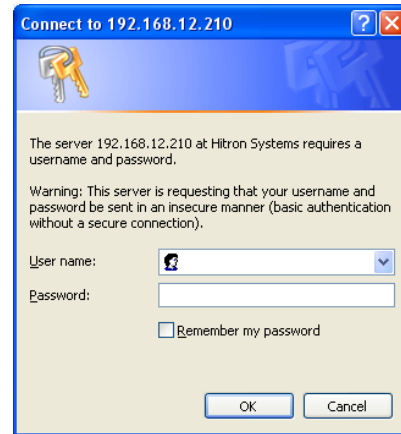
### 3.5 VK2-1080VFD3V9 Setup

This section describes how to configure the network camera, and is intended for product Administrators, who have unrestricted access to all the Setup tools; and Operators, who have access to the settings for Basic, Live View, Video & Image, Event, and System Configuration.

You can configure the VK2-1080VFD3V9 by clicking Setup in the top right-hand corner of the Live View page. Click on this page to access the online help that explains the setup tools

When accessing the VK2-1080VFD3V9 for the first time, the "Admin Password" dialog appears. Enter your admin name and password, set by the administrator.

**Note:** If the password is lost, the VK2-1080VFD3V9 must be reset to the factory default settings. See "3.6 Resetting to the Factory Default Settings".



### 3.6 Resetting to the factory default settings

To reset the VK2-1080VFD3V9 to the original factory settings, go to the Setup>System >Maintenance web page (described in "3.5.4 System>Maintenance" of the User's Manual) or use the control button on the network camera, as described below:

Follow the instructions below to reset the VK2-1080VFD3V9 to the factory default settings using the Reset Button.

1. Switch off the VK2-1080VFD3V9 by disconnecting the power adapter.
2. Open the top cover of camera.
3. Press and hold the Control Button (SW1) on the board with your finger while reconnecting the power.
4. Keep the Control button (SW1) pressed during about 2 seconds.
5. Release the Control Button (SW1).
6. The VK2-1080VFD3V9 resets to factory defaults and restarts after completing the factory reset. The unit now has the default IP address 192.168.30.220.
7. Close the top cover of camera.

**Caution:** When performing a Factory Reset, you will lose any settings you have saved.

### 3.7 More Information

For more information, please see the VK2-1080VFD3V9 User's Manual, which is available on the CD included in this package.