

# Network Camera

## SNC easy IP setup Guide

Software Version 1.0

Before operating the unit, please read this manual thoroughly and retain it for future reference.

# IPELA

---

# Table of Contents

---

## Overview

<b>Saving SNC easy IP setup software to your PC.....</b>	<b>3</b>
<b>Assigning the IP Address to the Camera .....</b>	<b>3</b>
SNC easy IP setup function .....	4
<b>Configuring Windows Firewall.....</b>	<b>6</b>
When using Windows 7 .....	6
When using Windows Vista .....	8
<b>Deleting the Software .....</b>	<b>9</b>

This instruction manual is for SNC easy IP setup, the software for assigning an IP address to Sony network cameras.

## Saving SNC easy IP setup software to your PC

- 1 Insert the CD-ROM in your CD-ROM drive. Open the index.html file on the CD-ROM. A cover page will appear automatically in your Web browser.
- 2 Click **Application** and check the EULA.
- 3 Click **Agree and install**.

### Tip

If you are using Windows XP Service Pack 2 or later, Windows Vista or Windows 7, a message regarding the active contents may appear.

- 4 Follow the Windows instructions to save SNC easy IP setup to the specified folder.

The software is saved.

## Assigning the IP Address to the Camera

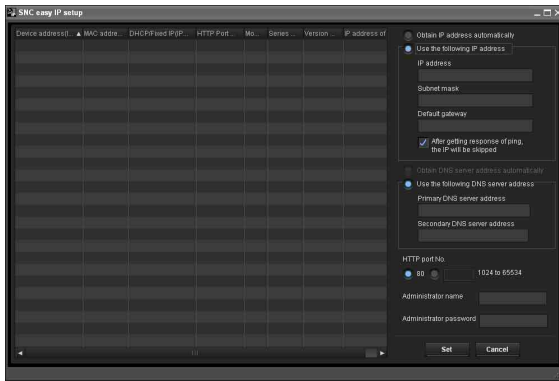
To connect the camera to a network, you need to assign a new IP address to the camera when you install it for the first time.

Before starting, connect the camera, referring to “Connection” in the supplied Installation Manual. Consult the administrator of your network for the IP address to be used.

### Notes

- SNC easy IP setup may not operate correctly if you use a personal firewall or antivirus software in your computer. In this case, disable the software.
- If you are using Windows XP Service Pack 2 or later, Windows Vista or Windows 7, disable the Windows Firewall function. Otherwise SNC easy IP setup will not operate correctly. For the setting, see “Configuring Windows Firewall” in “When using Windows Vista” on page 8 or “Configuring Windows Firewall” in “When using Windows 7” on page 6.

- 1 Start SNC easy IP setup.  
The network cameras connected to the local network are detected and listed on the main screen.



**Note**

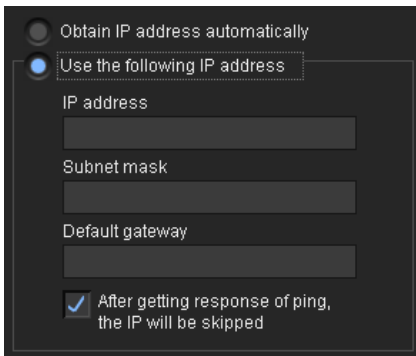
The message “User Account Control - An unidentified program wants access to your computer” may appear. In this case, click “Allow”.

- 2 Set the IP address.  
Select the camera from the list, then set the IP address.

**Tip**

The factory setting of the camera network is DHCP mode for both LAN and Wireless LAN.

**To specify the IP address manually:**  
Select **Use the following IP address**, and type the **IP address**, **Subnet mask** and **Default gateway** in the relevant boxes.



**To obtain the IP address automatically from a DHCP server:**  
Select **Obtain IP address automatically**.

**Note**

When you select **Obtain IP address automatically**, make sure that the DHCP server is operating on the network.

- 3 Set the DNS server address.

**To obtain the DNS server addresses automatically:**

Select **Obtain DNS server address automatically**.

**To specify the DNS server addresses manually:**  
Select **Use the following DNS server address**, and type the **Primary DNS server address** and **Secondary DNS server address** in the relevant boxes.

- 4 Set the HTTP port No.  
Normally, select **80** for the HTTP port No. To use another port number, type a port number between 1024 and 65534 in the text box.

- 5 Enter the administrator name and password.  
The factory settings for both items are “admin”.

**Note**

The setting is not available for other users except **Administrator**, which is registered on the camera setting screen.

- 6 Confirm that all items are correctly set, then click **Set**.  
If “Setting OK” is displayed, the IP address is correctly assigned.

- 7 When setting is finished, to access the camera directly, double-click the device name in the list.

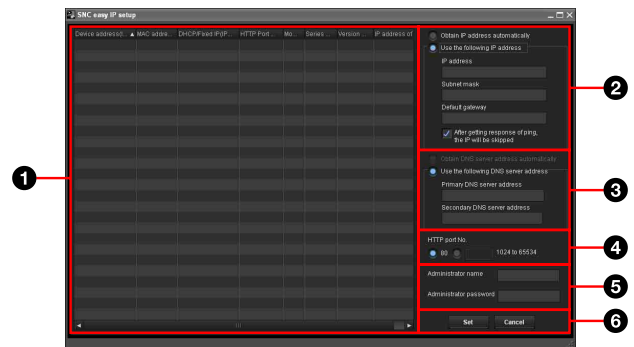
The viewer screen of the network camera is displayed on the Web browser.

**Note**

If the IP address is not set correctly, the viewer does not appear after step 7. In that case, set the IP address again.

## SNC easy IP setup function

### Software screen configuration



- ❶ **Camera list**  
Displays a list of the detected cameras.
- ❷ **IP configuration**  
Set the IP of the selected camera.
- ❸ **DNS configuration**  
Set the DNS of the selected camera.
- ❹ **Port configuration**  
Set the port of the selected camera.
- ❺ **Administrator configuration**  
Register the administrator of the selected camera.
- ❻ **Set/Cancel button**  
Set or cancel the configuration.

❶ **Camera list**

Device address(...)	MAC address...	DHCP/Fixed IP(IP...)	HTTP Port...	Mo...	Series ...	Version ...	IP address of

**MAC address**  
Displays the MAC address of the device.

**Device address (IPv4)**  
Displays the IPv4 address of the device.

**DHCP/Fixed IP (IPv4)**  
Displays the “DHCP” or “Fixed IP” address of the device.

**HTTP Port No.**  
Displays the HTTP port of the device.

**Model**  
Displays the model name of the device.

**Serial No.**  
Displays the serial number of the device.

**Version No.**  
Displays the software version of the device.

**IP address of NIC**  
Displays the IP address of the NIC (Network Interface Card) detected.

❷ **IP configuration**

**Obtain IP address automatically**  
Obtain the IP address automatically.

**Use the following IP address**  
Use the following IP address.

**IP address**  
Enter the IP address.

**Subnet mask**  
Enter the subnet mask.

**Default gateway**  
Enter the default gateway.

**After getting response of ping, the IP will be skipped**  
You can check that the entered IP address is available. To perform checking, select the checkbox. If the specified IP address is already being used, IP address configuration will be skipped.

❸ **DNS configuration**

**Obtain DNS server address automatically**  
Obtain the DNS server address automatically.

**Use the following DNS server address**  
Use the following DNS server address.

**Primary DNS server address**  
Enter the primary DNS server address.

**Secondary DNS server address**  
Enter the secondary DNS server address.

**4 Port configuration**

**HTTP port No.**  
Use the port No. 80 or specify another port number (between 1024 and 65534).

**5 Administrator configuration**

**Administrator name**  
Enter the administrator name.

**Administrator password**  
Enter the administrator password.

**6 Set/Cancel button**

**Set button**  
Set the configuration information on the camera.

**Cancel button**  
Clear the configuration and deselect the camera.

# Configuring Windows Firewall

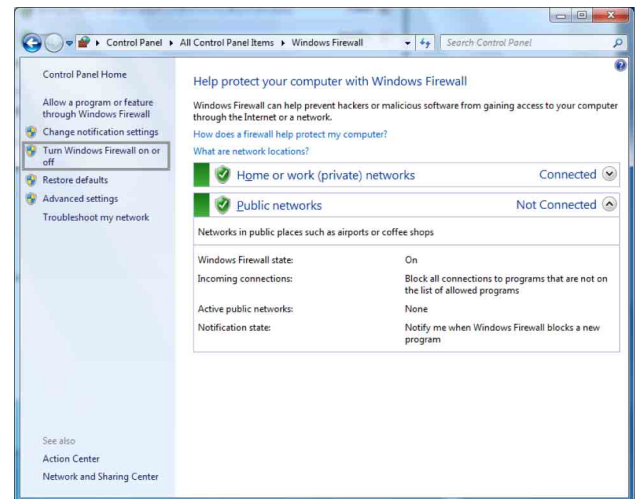
## When using Windows 7

### Configuring Windows Firewall

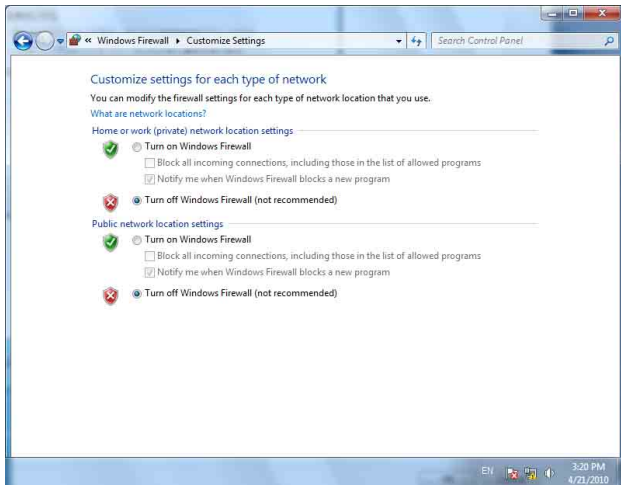
SNC easy IP setup may not operate correctly depending on the configuration of Windows Firewall. (No cameras are shown in the list even if they are detected.) In this case, confirm the Windows Firewall configuration as follows:

#### To turn Windows Firewall off

- 1 Select **Control Panel** from the **Start** menu of Windows.
- 2 Click **Windows Firewall**.
- 3 Select **Turn Windows Firewall on or off**.



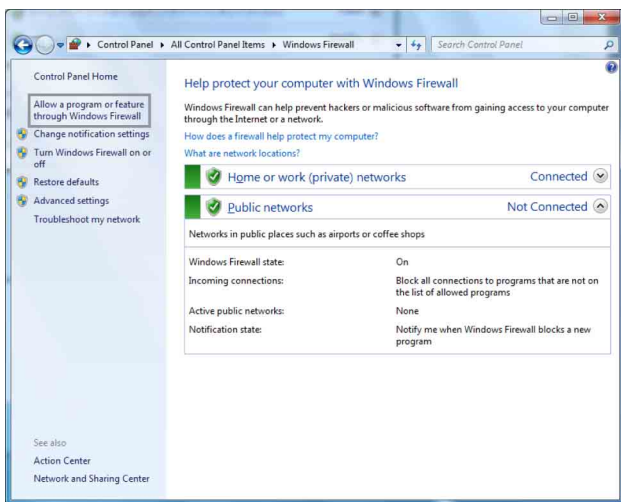
#### 4 Select Disable Windows Firewall.



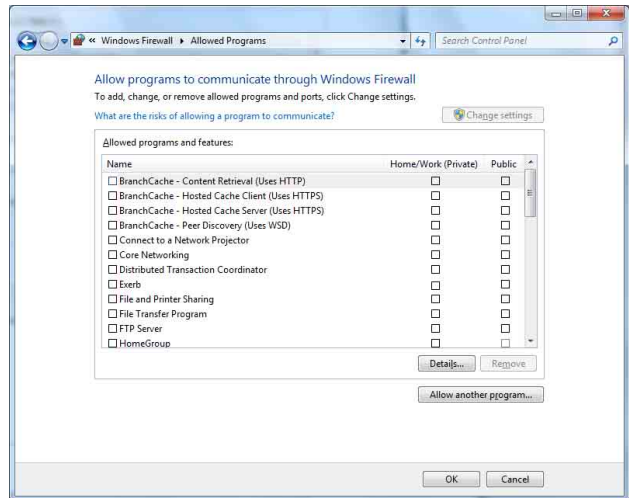
The cameras will be displayed in the list.

#### To turn Windows Firewall on

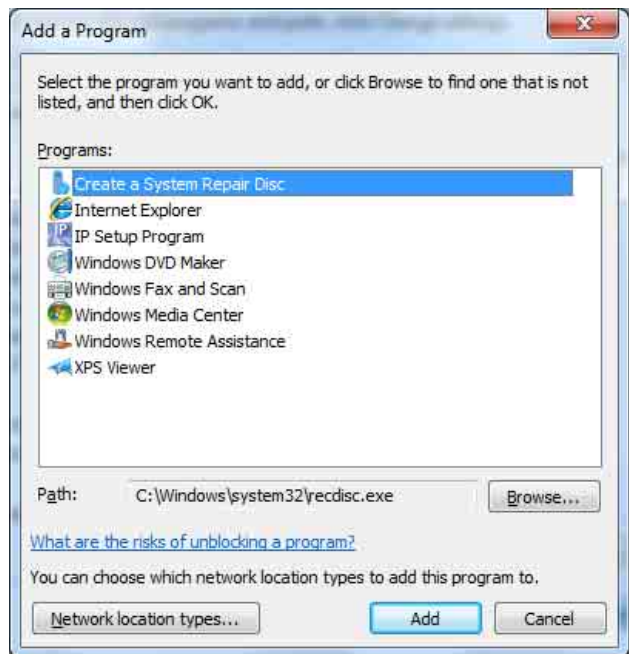
- 1 Select **Control Panel** from the **Start** menu of Windows.
- 2 Click **Windows Firewall**.
- 3 Select **Allow a program or feature through Windows Firewall**.



#### 4 Select Allow another program....



#### 5 Add program.



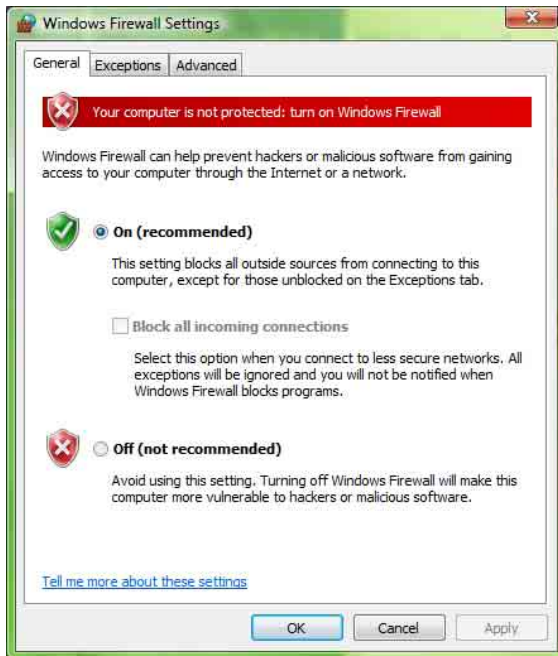
When the above procedure is completed, the cameras connected in the local network are displayed in SNC easy IP setup.

## When using Windows Vista

### Configuring Windows Firewall

SNC easy IP setup may not operate correctly depending on the configuration of Windows Firewall. (No cameras are shown in the list even if they are detected.) In this case, confirm the Windows Firewall configuration as follows:

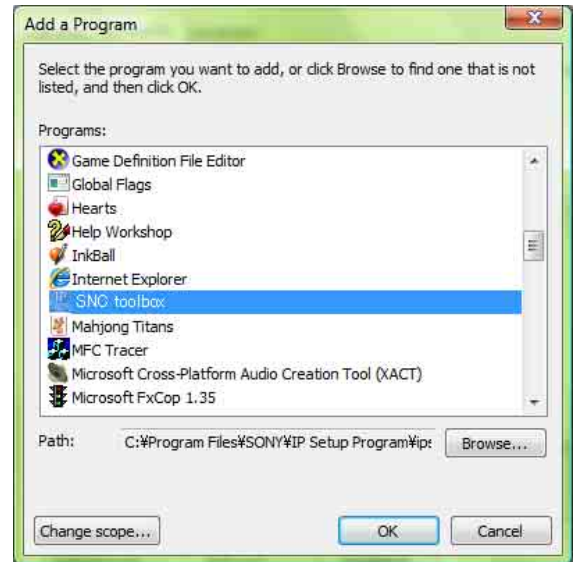
- 1 Select **Control Panel** from the **Start** menu of Windows.
- 2 Click **Windows Firewall**.
- 3 Select **Turn Windows Firewall on or off**. “User Account Control – Windows needs your permission to continue” may appear. In this case, click **Continue**.
- 4 Select **Off** in the **General** tab.



The cameras will be displayed in the list. If you want to keep Windows Firewall **On**, continue with the following steps.

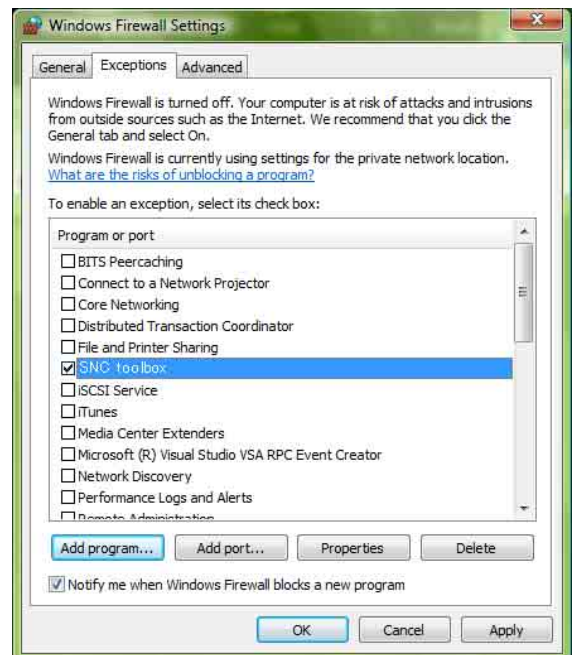
- 5 Select the **Exceptions** tab.
- 6 Click **Add Program....**

- 7 If the Add Program dialog appears, select SNC easy IP setup and click **OK**.



SNC easy IP setup is added to the Program or port list.

- 8 Click **OK**.



When the above procedure is completed, the cameras connected in the local network are displayed in SNC easy IP setup.



---

# Deleting the Software

Delete the SNC easy IP setup file from the folder specified when it was saved.

<http://www.sony.net/>

Sony Corporation