

Operating Instructions (Additional Features) Network Camera Recorder 16 Cameras Version

Please read this manual before using and save this manual for future reference.

Please note that since this software is a trial version, it has the following restrictions.


- camera registration is restricted to only 16 cameras
- support services are not available



The following features also cannot be performed: converting the recorded images, alarm recording, searching the recorded images by specified keyword, and automatically backing up recorded images.

Please purchase the BB-HNP11A/CE for sale to remove these restrictions.

Additional Feature table

The following features are added to this software. Read both Operating Instructions manuals before starting to use the product.

Additional Features	Contents	Page
Menu items are added.	[Alarm/Sensor Recording] on the [Record] menu bar is added.	page 4
	[To Next Selected Image] and [To Previous Selected Image] on the [Playback] menu bar are added.	page 4
	[Select All] on the [Recorded Images] menu bar is added.	page 4
	[Open Operating Instructions (Additional Features)] on the [Help] menu bar is added.	page 4
The toolbar button is added.	 (Start Alarm Recording button) on the toolbar is added.	page 5
The indicator is added.	The indicator of Alarm Recording is added.	page 5

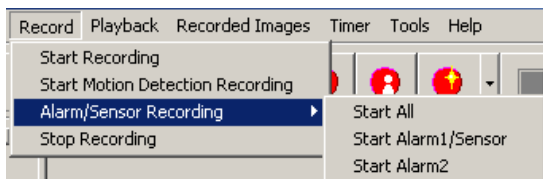
Additional Features	Contents	Page
The functions are added on the Recorded Image screen.	 and  are added on the Recorded Image screen	page 6
	[Select All] is added on the menu displayed by right-clicking on the recorded image list.	page 6
	[Alarm/Sensor Recording] tab is added.	page 6
	The function to play back is added.	page 6
The items are added on Camera Registration Information window.	[Alarm1/Sensor] and [Alarm2] tabs are added.	page 7
The items are added on Timer Registration Information window.	[Alarm1/Sensor] and [Alarm2] are added on the Recording Method of Timer Registration Information window.	page 8
Search items are added.	[Select Folder] is added in the Searched Target of Search window.	page 9
	[Alarm Recording] is added in the Recorded Status of Search window.	page 9
	The function to cancel searching is added.	page 9
Specifying the network drive.	A network drive can be specified to browse a folder.	page 10
Not to start this software when booting up the PC	It is possible to start or not to start this software when booting up the PC.	page 10
Converting the recorded images to MPEG files.	This software can convert the recorded images to MPEG files.	page 11
The error messages are added.	The error messages are added on the Error Message List.	page 13 — page 14

Trademarks

- Windows and Windows Media are either registered trademarks or trademarks of Microsoft Corporation in the United States and/or other countries.
- Screen shots reprinted with permission from Microsoft Corporation.
- All other trademarks identified herein are the property of their respective owners.
- This software is based in part on the work of the Independent JPEG Group.

Menu items are added

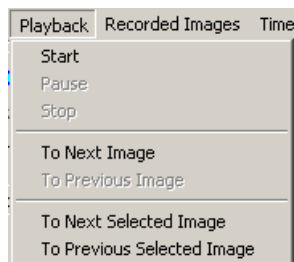
- [Record] → [Alarm/Sensor Recording] on the menu bar is added.
Start the Alarm/Sensor Recording selected on the Camera Registration Information window.



Note

This [Alarm/Sensor Recording] function is available when [Set the Alarm1 (Sensor, Alarm2) recording condition.] is checked on the [Alarm1/Sensor] tab and [Alarm2] tab of Camera Registration Information window.

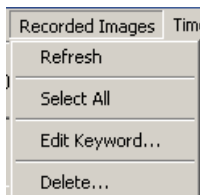
- [To Next Selected Image] and [To Previous Selected Image] on the [Playback] menu bar are added.
This function is used when multiple images are selected on the recorded image list.



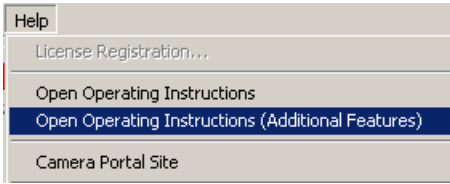
Note

[To Next Selected Image] and [To Previous Selected Image] are available when multiple images are selected on the recorded image list.


- [Select All] on the [Recorded Images] menu bar is added.

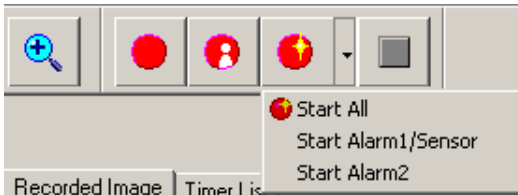


- [Open Additional Operating Instructions] on the [Help] menu bar is added. This Operating Instructions (Additional Features) will be opened.



The toolbar button is added

-  on the toolbar button is added. Start the Alarm/Sensor Recording selected on the Camera Registration Information window.







Note

This [Alarm/Sensor Recording] function is available when [Set the Alarm1 (Sensor, Alarm2) recording condition.] is checked on the [Alarm1/Sensor] tab and [Alarm2] tab of Camera Registration Information window.



The indicator is added

- The indicator of Alarm Recording is added.



    : Alarm/Sensor Recording
 Green Red Red

The functions are added on the Recorded Image screen

-  and  are added on the Recorded Image screen. Previous Selected Image and Next Selected Image are displayed when multiple recorded images are selected.



- [Select All] is added on the menu displayed by right-clicking on the recorded image list.

All images are selected on the recorded image list.

Recorded Date	Start Time	End Time	Keyword 1	
03/31/2005 (Th...	18:38:08	18:38:15		Playback
03/31/2005 (Th...	15:34:51	15:34:53		Refresh
03/31/2005 (Th...	15:25:26	15:34:52		Select All
03/31/2005 (Th...	15:33:46	15:33:48		
03/31/2005 (Th...	15:29:07	15:29:21		


- [Alarm/Sensor Recording] tab is added. The images recorded by Alarm/Sensor Recording are displayed.

Recorded Date	Start Time	End Time	Keyword 1	Keyword 2	Recording Sta...	Recording Met...
03/11/2005 (Fri)	19:22:07	Now Recording			Alarm/Sensor ...	Manual
03/11/2005 (Fri)	19:22:07	19:22:11			Alarm/Sensor ...	Manual
03/11/2005 (Fri)	19:22:05	19:22:10			Alarm/Sensor ...	Manual
03/11/2005 (Fri)	19:22:04	19:22:09			Alarm/Sensor ...	Manual
03/11/2005 (Fri)	19:22:03	19:22:08			Alarm/Sensor ...	Manual

The function to play back is added

There are two methods for playing back recorded images on the recorded image list.

The selected images are played chronologically.

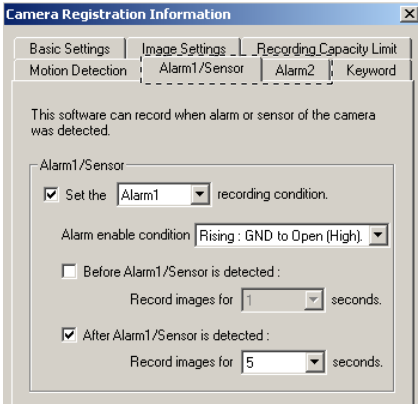
- Selecting [Playback] → [Start] on the menu bar
- Clicking 

Alarm/Sensor Recording is added

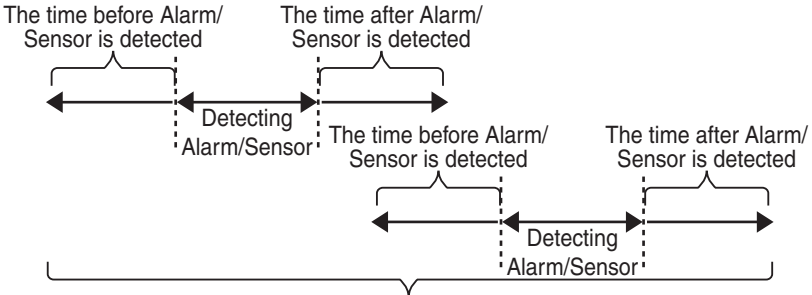
[Alarm1/Sensor] and [Alarm2] are added on the Camera Registration Information window.

Alarm/Sensor Recording is available with using the alarm/sensor function on the cameras.

(Only alarm/sensor-supported cameras can perform Alarm/Sensor Recording.)



Setting	Description
Set the [Alarm1/Sensor/Alarm2] recording condition	Check the box to record images while detecting the alarm signal of camera. Note Select [Sensor] for sensor-supported cameras.
Alarm enable condition	Specify Alarm enable condition ([Rising : GND to Open (High).] or [Falling : Open (High) to GND.]) Note <ul style="list-style-type: none"> Specify the alarm enable condition after checking the alarm's specification. [Rising : GND to Open (High).] is selected automatically when select [Sensor].
Before Alarm1/Sensor/Alarm2 is detected : After Alarm1/Sensor/Alarm2 is detected :	Specify the time before Alarm1/Sensor/Alarm2 is detected or after Alarm1/Sensor/Alarm2 is detected.

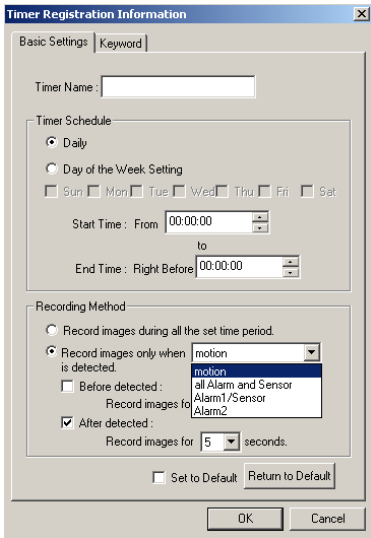


Note

Alarm/Sensor Recording is started by clicking [Record] → [Alarm/Sensor Recording] on the menu bar or [Start Alarm Recording] on the toolbar button.

The items are added on Timer Registration Information window

[Alarm1/Sensor] and [Alarm2] are added on the Recording Method of Timer Registration Information window.



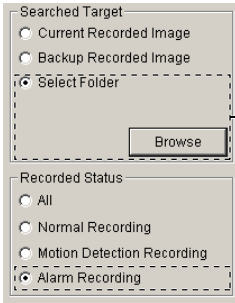
Note

This [Alarm/Sensor Recording] function is available when [Alarm1/Sensor] [Alarm2] tab → [Set the Alarm1/Sensor/Alarm2] is checked on Camera Registration Information window. (See page 7)

Search items are added

[Select Folder] is added in the Searched Target, and [Alarm Recording] is added in the Recorded Status.


It is possible to specify any backup folders.



[Browse] is available to select [Select Folder]. Click the [Browse] button to browse the folder.

The next message is displayed during searching.



Click  to stop searching.

Specifying the network drive

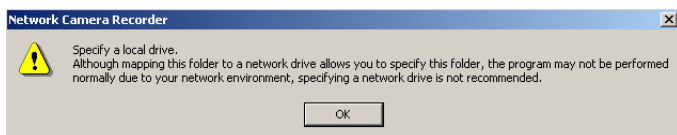
When assigning the drive letter to the folder on the network, you can specify it when selecting the following folders.

- The destination folder of the recorded images
- The automatic backup folder
- The folder to save when recorded images are converted
- The folder to save the import/export file of setting information
- The folder to select in the Searched Target of Search window

See Windows® Help to map the network drive.


Note

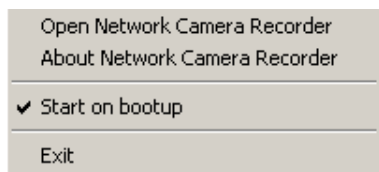
- The next message is displayed if the folder is selected on the network without mapping the network drive.



- If the network drive is assigned as the destination folder or backup folder, the operation, such as previewing camera images, recording images, or playing recorded images will be inferior or errors will occur. We recommend to specify the folders on the local drive.

Not to start this software when booting up the PC

When right-clicking  on the system tray, the menu is displayed.



Uncheck [Start on bootup] not to start this software.

Converting the Recorded Images to MPEG files

1. Select a camera preview on the camera list.
 - The selected camera is displayed in a blue frame.
2. Select the recorded images to convert to MPEG files on the recorded image page.
 - The selected recorded images are displayed on the screen.
3. Select [Tools]→[MPEG Conversion] on the menu bar.
 - You can select [MPEG Conversion] from the menu displayed by right-clicking the recorded image list.

Recorded Date	Start Time	End Time	Keyword 1	Keyword 2	Recording Sta...
03/11/2005 (Fri)	19:42:08	19:42:09			Motion Detectio...
03/11/2005 (Fri)	19:41:30	19:41:35			Motion Detectio...
03/11/2005 (Fri)	19:41:29	19:41:35			Motion Detectio...
03/11/2005 (Fri)	19:41:20	19:41:27			Alarm/Sensor ...
03/11/2005 (Fri)	19:22:07	19:41:07			Alarm/Sensor ...
03/11/2005 (Fri)	19:22:07	19:22:11			Alarm/Sensor ...
03/11/2005 (Fri)	19:22:05	19:22:10			Alarm/Sensor ...
03/11/2005 (Fri)	19:22:04	19:22:09			Alarm/Sensor ...
03/11/2005 (Fri)	19:22:03	19:22:08			Alarm/Sensor ...
03/11/2005 (Fri)	19:22:02	19:22:07			Alarm/Sensor ...
03/11/2005 (Fri)	19:22:01	19:22:06			Alarm/Sensor ...
03/11/2005 (Fri)	19:22:01	19:22:06			Alarm/Sensor ...
03/11/2005 (Fri)	19:22:00	19:22:05			Alarm/Sensor ...

Playback
Refresh
Select All
Edit Keyword...
JPEG Conversion...
MPEG Conversion...
Delete...



MPEG Conversion [X]

Image Information

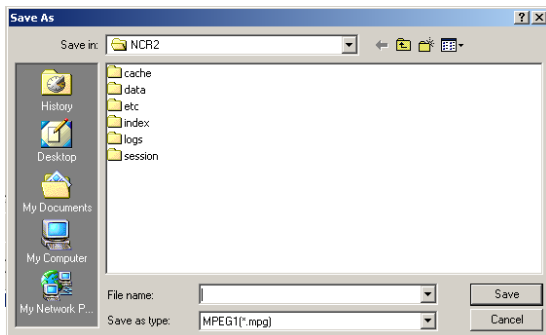
Recorded Date : 03/29/2005

Recorded Time : 16:32:16 to 16:37:12

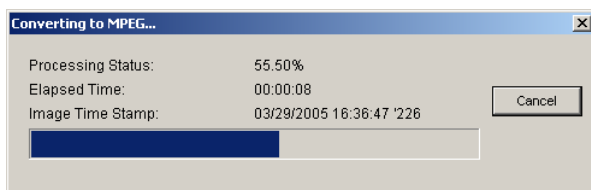
Start Time : From to

End Time : Right Before

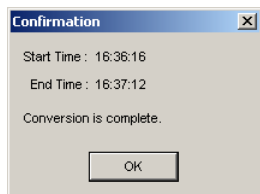
4. If you specify the time, set the start time and end time, and then click [OK].
 - The Save as ... window is displayed.



5. Select the folder, enter the file name, and then click [Save].
 - The MPEG conversion is started.



- If the MPEG conversion is complete, the following window is displayed.



Notes

- If you do not specify the time, all selected images are converted to MPEG files.
- The audio is not saved.
- The converted MPEG file can be played back in Windows Media® Player (Version 9.0 or later).
- If the conversion is cancelled, the file is not saved.

Error message list

Message	Cause and Remedy
There is insufficient free space on the Save Destination Disk or Save Destination Folder cannot be accessed. Delete unnecessary recorded images or confirm the Save Destination Folder to be accessed.	<ul style="list-style-type: none"> • The destination free disk space is insufficient. Can not access to the destination drive → Follow the instruction message.
Specify a local drive. Although mapping this folder to a network drive allows you to specify this folder, the program may not be performed normally due to your network environment, specifying a network drive is not recommended.	<ul style="list-style-type: none"> • Folders on the network could not be specified as the folder. → Follow the instruction message.
Select folder.	<ul style="list-style-type: none"> • The [Select Folder] was checked in the Searched Target of Search window, and a folder is not selected. → Select a folder on the Browse for Folder window to click [Browse].
Set the alarm or sensor at Camera Registration Information Window or change the Recording Method before you enable the Timer with Alarm and Sensor.	<ul style="list-style-type: none"> • Though Alarm/Sensor Recording is not selected on Camera Registration Information window, tried to enable the Timer with Alarm and Sensor. → Follow the instruction message.
Recording Method is not correct. Change the Recording Method before you enable the Timer.	<ul style="list-style-type: none"> • Invalid information has been set in the Recording Method. → Follow the instruction message.
This software disabled the timer which has Alarm or Sensor that has been replaced. Set the alarm or sensor at Camera Registration Information Window or change the Recording Method before you enable the Timer with Alarm and Sensor.	<ul style="list-style-type: none"> • Though the Timer with Alarm and Sensor is selected on Timer Registration Recording on Camera Registration Information window. → Follow the instruction message.

Message	Cause and Remedy
<p>This software disabled the timer which Recording Method is not correct. Change the Recording Method before you enable the Timer.</p>	<ul style="list-style-type: none"><li data-bbox="485 220 996 326">• Invalid information has been set in the Recording Method. → Follow the instruction message.

MEMO

