

NVR3216

Standalone Network Video Recorder



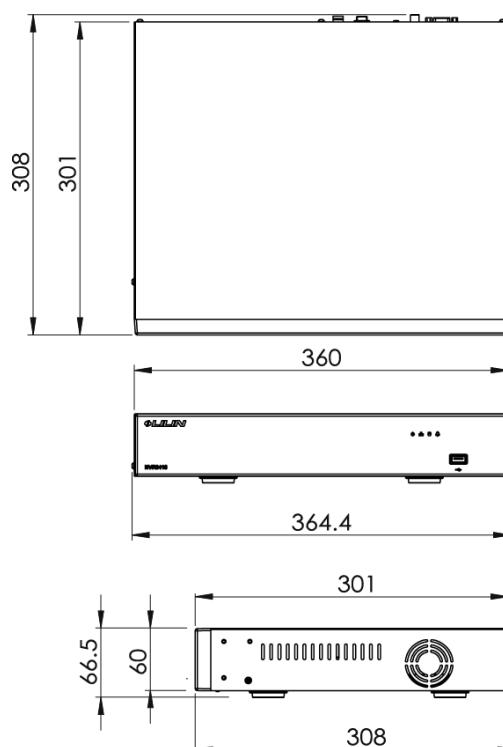
- 16 Channel H.264 network camera Input
- Up to 5MP H.264 network camera support
- Up to 1080p 60 FPS network camera support
- Up to 8TB HDD supported
- HDMI / VGA 1080P output
- Mobile phone (iOS, Android) solutions provided
- Network maximum input through up to 96Mbps
- Chrome, Edge, Firefox, IE, Opera, Safari supported



LILIN NVR3216 is a 16-channel NVR (Network Video Recorder) designed for various recording applications. The system is equipped with an ARM Cortex A9 Dual-core processor with maximum recording throughput at 144Mbps (incoming 96Mbps, outgoing 48Mbps). Parameters such as IP address and basic IP camera configurations can easily be adjusted with the LILIN setup wizard – IPScan and WS-Discovery, making the NVR3216 the easiest NVR system to use. With local VGA and HDMI display (with Full HD resolution at 1,920 x 1,080) and mouse and keyboard input available, configuring LILIN NVR is simple – an answer to meet most SMB owners' security needs.

Dimensions (unit in mm):

360 x 316 x 60 mm



Adapted to ONVIF-compliant IP cameras

NVR3216 is an easy-to-install Linux based standalone HD solution for recording ONVIF compatible cameras



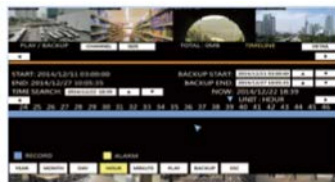
Instant Notifications

When an event occurs and the alarm recording is enabled, an alarm icon will be shown instantly on the monitored display



Timeline-based Search

Search can be performed to available recorded videos on the basis of channel number, recording type and timeline of the event.



Streams and Records up to 16 IP Cameras

Remote monitoring in NVR3216 allows you to check the live feeds from all surveillance cameras at any time, making sure your property and staff are safe and well protected.



PTZ (Pan-Tilt-Zoom) Control

You can adjust the PTZ (Pan-Tilt-Zoom) functions of supported cameras directly on the NVR User Interface, which greatly enhances the convenience in remote monitoring.



P2P

P2P is an easy-to-use service that allows users to access a LILIN NVR by simply scanning a QR code with your smartphone camera. With P2P, you will no longer set up port forwarding in the router, and the use of a P2P driver enables you to access two-way audio, video playback, IO control, and even PTZ control.



Email Notification

LILIN NVR can send email notification with JPEG snapshots as an attachment to one or more recipients in case of any event.



Plug-n-play Device

An automated installation wizard, *IPScan* and *WS Discovery*, can locate all the cameras on the network and import a preview picture of each channel to help with identification.



Remote Viewing

With *LILINViewer*, remote viewing from handheld devices is fully enabled, with iOS and Android compatibility. The application provides security alarm push notification, real-time live viewing, and remote video playback.



HTML5

Now all LILIN NVRs embrace the latest HTML5 technology. HTML5 protocols do no longer require ActiveX plugins for QuickTime or Java videos. What's more, you will never be restricted by limited browsers such as Safari, Chrome, and Firefox in both PC, iOS, and Android.



16 CH 5MP 2HDD Standalone Network Video Recorder

IP Video Input	
Model#	NVR3216
Supports	Network camera / ONVIF Profile S / DVR / NVR / Video encoder / Navigator
Input	16 CH
Resolution	CIF / VGA / D1 / 960H / 1M / 1.3M / 1080P / 3M / 5M
Maximum Frame Rate	480 FPS

Video output	
Output	HDMI / VGA 1080P
Split Screen	1 / 4 / 8 / 9 / 13 / 16 split division, sequence mode, freeze
Digital Zoom	Up to 64X on live and playback

Certifications	
CE	Yes
FCC	Yes

Recording	
Network video Format	H.264
Maximum Network Throughput	96Mbps
Recording Resolution	CIF – 5M
Frame Rate	Single channel up to 1080p 60 FPS
Recording Mode	Manual, schedule (continue, event, none)
Recording Schedule	Each channel 7day x 24 hours time table, recording mode configurable
Alarm Event Actions	Motion grid (20x12, multi-level sensitivities) / network camera event / DI
Alarm Notification	Alarm notification iOS、 android / E-Mail / FTP / buzzer / DO

Playback	
Playback Search	Alarm event / Operation event / System event / Meta data event / Time search
Playback Display	16 CH synchronous playback
Playback Resolution	CIF ~ 5MP
Max. Frame Rate	Up to 1080p 60FPS
Playback Speed	Fast rewind 2x~64x / Fast forward 2x~64x / Step Forward / Slow motion 1/2 ~ 1/16

Storage	
Internal HDD	2 x 3.5" HDD (Up to 8TB supported)

Backup	
USB Flash Disk	Up to 32 GB supported
Network Backup	Via HTTP / FTP / Network Places
DVD/RW	External USB DVD/RW

Audio	
Audio Input	16 CH (IP camera), G.711 8K
Audio Output	RCA x 1
Network Camera Two Way Audio	Yes

Network	
Network ports	RJ-45 Gigabit Ethernet x 1
Protocols	ARP / TCP/IP / UDP / HTTP / HTTPS / SMTP / SNMP / FTP / DDNS / PPPoE / NTP / RTP / RTSP / DHCP/ Onvif Profile S
Web	Direct internet browser access / Multiple users access
Mobile Phone	iOS / Android supported
P2P	APP scan QR Code / UID connection
RTSP Service	RTP UDP/ RTSP TCP supported
IPScan / WS-Discovery	WS-Discovery and IP Scan, automatically quick IP address setup for network cameras

Software	
VMS	Navigator
Backup / Playback	Remote Playback Manager / Backup, multiple NVRs file download and

	multi-channel playback
--	------------------------

Alarm	
Ports	DI x 4 and DO x 1

System	
Reports	Alarm event, operation, configuration and system execution log full reports exporting over HTTP or USB
Authentication	User authentication with feature configurable and IP address blocking
Language	Arabic, Chinese (Traditional), Chinese (Simplified), English, French, German, Hungarian, Italian, Japanese, Korean, Polish, Portuguese, Russian, Spanish, Turkish
HDD Inspection	S.M.A.R.T monitoring / File system de-fragmentation/ IO read write error
Recording Day	Automatic recording day calculator
Time	Daylight saving / NTP / External USB GPS time sync

Accessories	
PTZ Protocols	HTTP / ONVIF
USB to RS-232	Record external metadata via USB to RS-232 cable, display at live and playback
Remote Control	Remote controller addressable up to 255 NVRs
Mouse	Mouse click, drag and scroll
Microphone	USB Mic. support (Need additional option)
Wi-Fi Dongle	WiFi and 4G external USB dongle supported (Certified brand only)

Others	
CPU	ARM Cortex A9 Dual Core
OS	Embedded Linux Kernel 3.0
WDT	Hardware watchdog timer

Power and working environment	
Power	Adapter DC 12V, 5A, 60W x 1
Operating Temperature	0°C ~ 45°C
Operating Humidity	5% ~ 80%
Dimensions (WxLxH)	360 x 316 x 60 mm
Weight	≈2.2 kg (Without hard drive)

Copyright © Merit LILIN 2017 | All rights reserved | Product specifications and availability are subject to change without notice