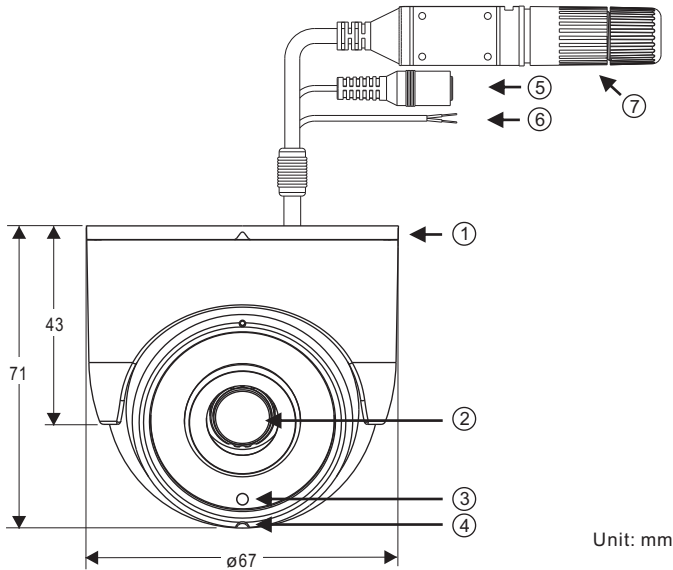


### Installation Guide

#### Part Description & Dimensions

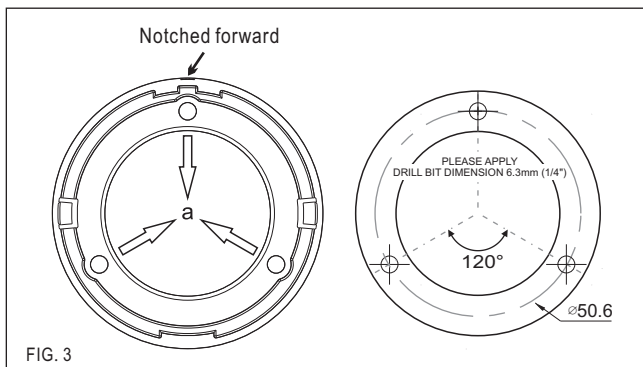
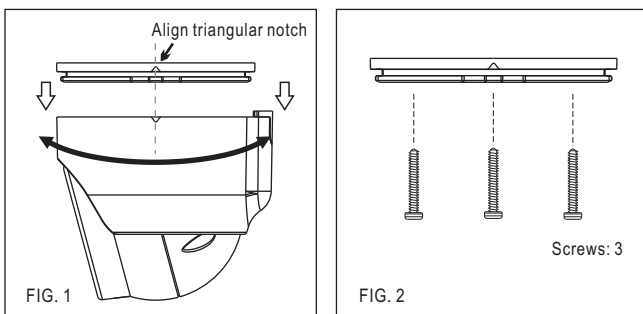


Unit: mm

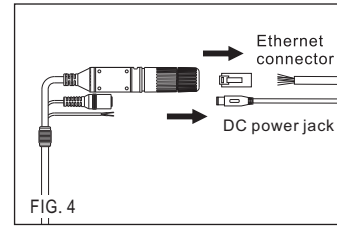
- ① Bottom Chassis
- ② Lens
- ③ Light sensor
- ④ Microphone
- ⑤ RJ-45 Ethernet connector (supports PoE)
- ⑥ Power jack (DC12V ±10%)
- ⑦ Reset Wire (strip off the wire insulation if needed; after the camera is reset, cut off the bare wire)

#### Installation

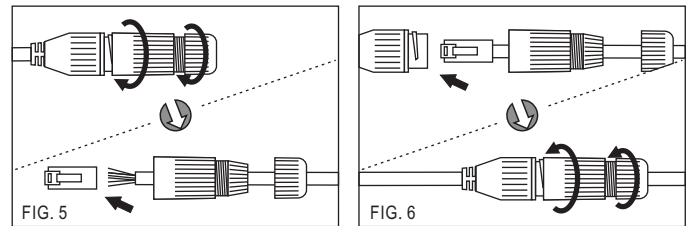
1. First take out the camera, align the bottom chassis to the triangular notch and remove the bottom chassis (FIG.1). Use the included screws (M4.0x25) through the holes marked as "a", and fix the camera in the desired location (FIG.2 & 3).



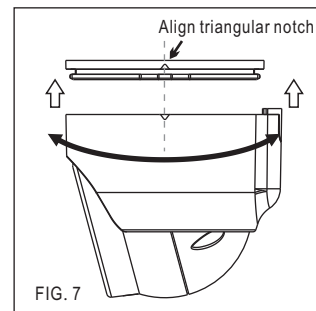
2. Attach the power cable and video cable to the video output jack and DC power input jack, respectively (FIG.4).



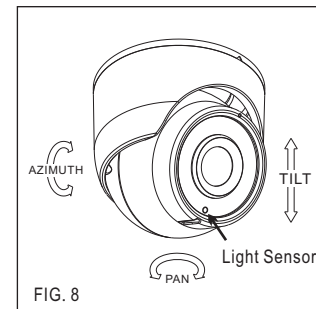
● Connect the RJ-45 Ethernet cable with a waterproof connector. First, remove the waterproof connector and unscrew the waterproof nut. Insert the Ethernet cable and connect to the RJ-45 connector with proper tools (FIG.5). Then, tighten the waterproof connector and nut before the RJ-45 connector is connected to the camera (FIG.6).



3. Align the camera's main body to triangular notch of the bottom chassis, press in and rotate to desired monitoring direction (FIG.7).



4. Adjust the pan, tilt, and azimuth of the camera to the desired location (FIG.9).

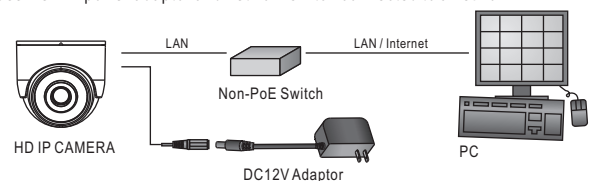


● Make sure the light sensor is at the lowest side of the camera (FIG.8).

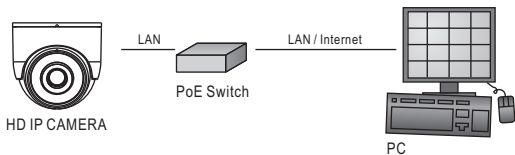
#### System Architectures

For connecting D/N 1080P HD IP Camera series to the network, please follow one of the system architectures:

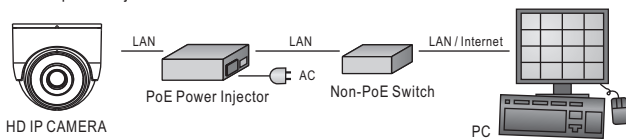
(1) Use DC12V power adaptor and network switch connected to a network.



(2). Use with PoE of the network switch connected to the network.



(3). Use PoE power injector and the network switch connected to the network.



## Emergency Factory Default

To restore the hardware to factory default settings, please follow these steps:

1. Short the "RESET wire" for 10 seconds before releasing.
2. The camera will be restored to factory default settings after approximately 90 seconds and will reboot automatically.
3. Search for the IP device using the IPScan software.
4. Start the IP device via an Internet browser.
5. Enter the default username "admin" and password "pass" to operate.

**NOTE:** the IP address will revert to the default setting of 192.168.0.200.

## Before Accessing IP Cameras

Before accessing the IP camera, make sure that the camera's RJ-45 network, audio, and power cables are properly connected. To set the IP address, consult your network administrator for an available IP address. The default IP address for each IP camera is 192.168.0.200. Users can use the default IP address to verify the camera's network connection.

## Software Requirements

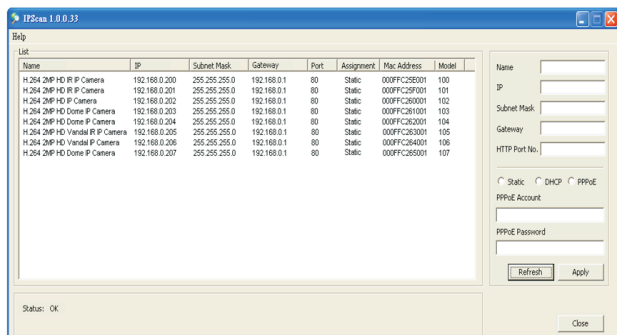
Universal ActiveX software components are required for online display of MJPEG or H.264 Full HD video. When you log in to the IP camera from Internet Explorer, a security warning dialog box will prompt the installation of the Universal ActiveX plug-in. Click **Install** to download it.



## Configuring IP Addresses with IPScan Software

To configure an IP address using IPScan. To change the settings of the IP address, subnet mask, gateway, or HTTP port, you can follow the steps below:

1. Run the IPScan software.
2. Click **Refresh**. All available devices should be listed in the device list.
3. Select your device from the list provided.
4. Change the IP address, subnet mask, gateway, or HTTP port for the IP camera.
5. Click **Apply** to submit the settings.
6. Click **Refresh** to verify the settings.



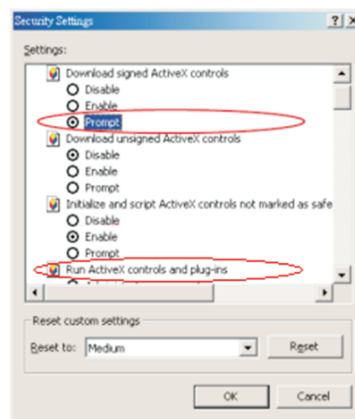
## Configuring IP Addresses via Web Interface

To change an IP address via a web interface, type the default IP address (192.168.0.200) in the Internet browser and follow the steps below:

1. Log in to the Full HD IP camera with the default username "admin" and default password "pass".
2. Click **Basic Mode**.
3. Click **Network->General**.
4. Change the IP address, subnet mask, gateway, or HTTP port for the IP camera.
5. Click **Submit** to verify the settings.

## Internet Browser Settings & Application Required

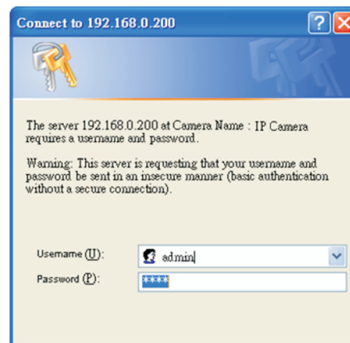
Make sure your Internet browser allows the signed ActiveX plug-in to work on your computer. To do this, open Internet Explorer and go to **Tools->Options->Security Settings**. Set "Download Signed ActiveX plug-in controls" to "Prompt" and "Run ActiveX control and plug-in" to "Enable".



Once complete, you can access the IP camera's live video by entering the default IP address via your Internet browser. When the security warning dialog box appears, click **OK** to download the ActiveX plug-in directly from the IP camera.

## Login

To log on to the IP camera, please enter the username and password on the login page and click **Submit** to enter the system.



The default usernames and passwords are as follows:

	Administrator
Username	admin
Password	pass