

AXIS P85 Network Camera Series

Eye-level covertly mounted cameras for reliable identification.



- > Sharp images for identification and overview
- > Excellent video quality including HDTV 720p
- > Multiple H.264 video streams
- > Quick installation with Power over Ethernet

The eye-level cameras come installed in a pipe at a height of 160 cm (5.2 ft.) and offer a covert indoor video surveillance that blends in with any retail, hotel and banking environment.

Designed for placement near exits of buildings, the height of AXIS P85 Network Cameras are optimized in such a way that it looks straight at the face of people, allowing reliable identification even if the person is wearing a hood or baseball cap. The covert cameras are almost impossible to discover, keeping them protected from tampering and enabling them to provide perfect shots thanks to the eye-level placement.

Providing excellent video quality at full frame rate, the camera series consists of AXIS P8513 with SVGA resolution and AXIS P8514, which supports 1 megapixel and HDTV 720p in both H.264 and Motion JPEG streams.

The camera appears as a rounded height strip if the included decal is used, and the round shape allows for an optimized angle of view and adjustment, by simply rotating the pipe. The height indicator decal also helps to further hide the camera pinhole. This shape is unique compared to competitive solutions, which are often squarely mounted on the wall or door frame.

AXIS P85 cameras are designed for quick installation. The cameras come with a 1.3 meter (4.3 ft.) pre-mounted Ethernet cable with a female connector. AXIS P8513/P8514 comes in three colors: black, white and chrome to blend perfectly into environments where there are similar type of pipes, such as water and electrical pipes and sprinkler, heating system pipes.



Technical specifications – P85 Network Camera Series

Camera	
Models	AXIS P8513: SVGA AXIS P8514: 1 MP/HDTV 720p Including a 1.3 m (4.3 ft.) Ethernet cable with female RJ-45 connector
Image sensor	1/4" progressive scan RGB CMOS
Lens	AXIS P8513: 3.7 mm: 48° view*, F1.8 AXIS P8514: 3.7 mm: 57° view*, F1.8 *horizontal angle of view
Minimum illumination	1 lux, F1.8
Shutter time	1/24 500 s to 1/6 s
Camera angle	Rotation ± 90° adjustment
Video	
Video compression	H.264 (MPEG-4 Part 10/AVC) Motion JPEG
Resolutions	AXIS P8513: 800x600 to 160x90 AXIS P8514: 1280x800* to 160x90 *1440x900 (1.3 MP) scaled resolution available via VAPIX®
Frame rate H.264/ Motion JPEG	30 fps in all resolutions Multiple, individually configurable streams in H.264 and Motion JPEG Controllable frame rate and bandwidth VBR/CBR H.264
Pan/Tilt/Zoom	Digital PTZ, preset positions, guard tour
Image settings	Compression, color, brightness, sharpness, contrast, white balance, exposure control, exposure zones, backlight compensation, wide dynamic range – dynamic contrast, fine tuning of behavior at low light, mirroring of images Rotation: 0°, 90°, 180°, 270° Text and image overlay, privacy mask
Network	
Security	Password protection, IP address filtering, digest authentication, HTTPS** encryption, IEEE 802.1X**, user access log
Supported protocols	IPv4/v6, HTTP, HTTPS**, SSL/TLS**, QoS Layer 3 DiffServ, FTP, SMTP, Bonjour, UPnP, SNMPv1/v2c/v3 (MIB-II), DNS, DynDNS, NTP, RTSP, RTP, TCP, UDP, IGMP, RTCP, ICMP, DHCP, ARP, SOCKS

** This product includes software developed by the OpenSSL Project for use in the OpenSSL Toolkit. (www.openssl.org)

System integration	
Application Programming Interface	Open API for software integration, including VAPIX® from Axis Communications; specifications available at www.axis.com Support for AXIS Video Hosting System (AVHS) with One-Click Camera connection
Intelligent video	Video motion detection, active tampering alarm
Alarm triggers	Intelligent video
Alarm events	File upload via FTP, HTTP and email; notification via email, HTTP and TCP; pre- and post-alarm video buffering
Installation aids in software	Pixel counter
General	
Casing	Epoxy painted steel tube available in white, black and chrome Color: white: Ral 9010, black: Ral 9005
Processor and memory	ARTPEC-3, 128 MB RAM, 128 MB Flash
Power	Power over Ethernet IEEE 802.3af Class 1, max. 3.2 W
Connectors	Female RJ-45 10BASE-T/100BASE-TX PoE
Operating conditions	0 °C to 50 °C (32 °F to 122 °F)
Approvals	EN 55022 Class B, EN 60950-1, EN 61000-3-2, EN 61000-3-3, EN 61000-6-1, EN 61000-6-2, EN 55024, ICES-003 Class B, FCC Part 15 Subpart B Class B, VCCI Class B C-tick AS/NZS CISPR 22, Class 3K3 of IEC 60821-3-3 (Temperature range 0°C to +50°C, humidity excluded) Class 3M3 of IEC 607213-3: vibration, shock and bump
Weight	4.5 kg (9.9 lb.)
Dimensions	2830 x 51 mm (111.4" x 2")
Included accessories	Clamps, Installation Guide AXIS P8513/P8514 white: Height indicator decal pre-mounted AXIS P8513/P8514 black: Height indicator decal included AXIS P8513/P8514 chrome: Height indicator decal included

More information is available at www.axis.com

Optional accessories

AXIS PoE Midspans



AXIS T8310 Video Surveillance Control Board



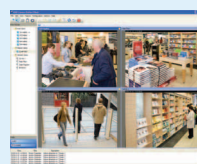
AXIS T8412 Installation Display



AXIS T90A White Light Illuminators



AXIS P7701 Video Decoder



For information on AXIS Camera Station and video management software from Axis' Application Development Partners, see www.axis.com/products/video/software/