

AXIS Camera Station

Flexible surveillance software for your Axis network video products

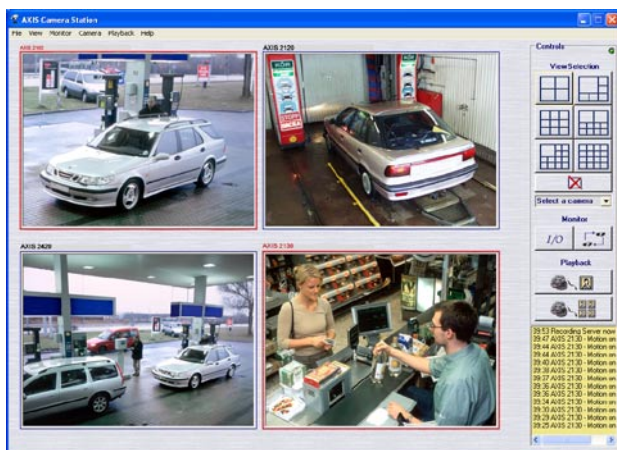
Make advanced surveillance simple! With AXIS Camera Station you can monitor your cameras simultaneously and, at the same time, record high-quality digital video continuously or when triggered by motion or external events. Application and camera based motion detection and intelligent, differentiated day and night settings optimize trigger levels. This reduces false alarms and improve sensitivity for real detections. Recorded incidents can easily be found for immediate action and multi-view playback clarifies incident timeframe.

Prevent shoplifting, secure your car park or schoolyard and monitor the back door – just a few examples that can make your investment pay off quickly.

The AXIS Camera Station is specially designed to be used with Axis video products and to deliver superior results on a Windows PC. It offers flexible functionality and stable operation. The scalability with easy addition of camera licenses, free Web interface, and Windows client for remote control, also gives extra benefits.



- View and record live video remotely from multiple cameras simultaneously
- Record continuously, on alarm or on motion detection
- High quality recordings
- No recording limitation in software
- Full duplex audio communication



Product Features

Viewing

- Live view of up to 16 cameras
- Web client for remote viewing
- PC client included for remote viewing and administration
- Control of PTZ cameras including preset positions for instant viewing
- Multiple camera sequence
- Full duplex real time audio support without recording

Recording

- Limit recordings to images on motion or alarm
- Scheduled recording, on time and/or events
- Unlimited recording database, only limited by hardware
- Recording duration can be limited per camera to fit local legal requirements
- Warnings on deleted or altered images in recorded events

Event handling

- Advanced motion detection with exclude filter for image areas of no interest
- Camera-based motion detection to save on bandwidth
- "No motion" detection
- Event functionality with alarm notification via e-mail
- All system messages on-screen, in log files and optionally via e-mail

Playback

- Playback of recordings at controllable speed and play direction
- Multi-view playback
- Export single images and video sequences
- Search for motion in continuous recordings
- Find recorded events by date, time or motion

Other

- Standard license for 10 cameras. Additional licenses in +1 or +5 up to 25 cameras
- Advanced input/output control
- User access control per camera

Operating System Requirements

- Windows XP Professional (SP1a), 2000 (SP4), 2003
- Internet Explorer 6.0, or higher
- TCP/IP support
- Internet Information Server (IIS) - for Web client
- MS .NET runtime environment

Axis Camera & Video Server Support

AXIS Camera Station supports the following Axis devices:

Network Cameras

- AXIS 205, AXIS 210, AXIS 2100, AXIS 2110, AXIS 2120, AXIS 2130 and AXIS 2420

Video servers

- AXIS 2410, AXIS 241S, AXIS 2400, AXIS 2400+, AXIS 2400+ Blade, AXIS 2401, AXIS 2401+, AXIS 2401+ Blade and AXIS 2411

Audio module

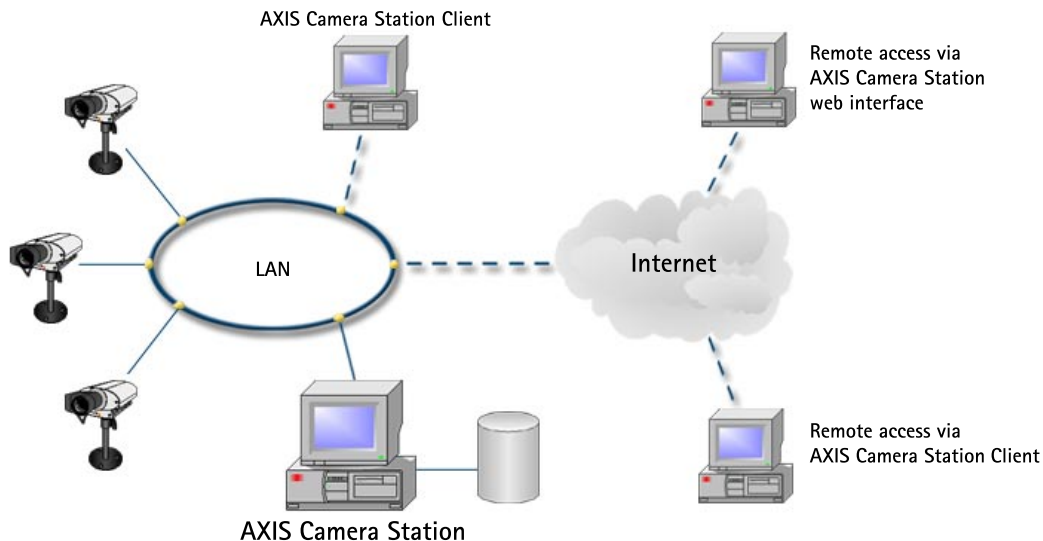
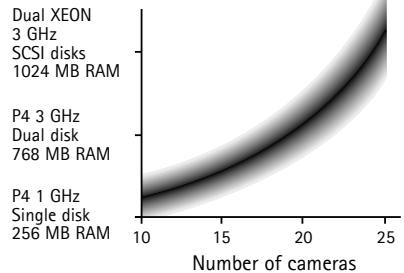
- AXIS 2191

Minimum Hardware Requirements

- Pentium 4, 1 GHz processor
- 256 MB RAM
- Hard disk: 1 GB for installation and 2 GB or higher per camera as image database
- NTFS file system
- CD-drive
- XGA (1024 x 768) or higher resolution monitor
- Graphic card with 32MB or more memory
- Microsoft mouse or compatible pointing device
- 100 Mbit Ethernet

Recommended Hardware Requirements

- Pentium 4, 2GHz processor
- 512 MB RAM
- Dual hard disks



www.axis.com