

## AXIS 232D+ Network Dome Camera

For professional video surveillance applications.



- > 18x optical zoom with autofocus
- > Simultaneous MPEG-4 and Motion JPEG
- > Day/night functionality
- > Wide Dynamic Range
- > High precision PTZ control

AXIS 232D+ Network Dome Camera delivers superior quality MPEG-4 and Motion JPEG video in all light conditions. It is perfect for professional security installations at airports, railway stations and prisons, as well as at warehouses, manufacturing facilities, shipping centers and school campuses.

The camera's 18x optical and 12x digital zoom with autofocus provides powerful zoom capabilities to enable monitoring of distant objects in sharp detail.

Simultaneous MPEG-4 and Motion JPEG video streams allow for optimization of image quality and bandwidth efficiency.

With 128x Wide Dynamic Range (WDR), AXIS 232D+ ensures high-quality video even in complex lighting conditions.

AXIS 232D+ provides continuous 360-degree pan and supports 50 preset positions and guard tour. Fast, high precision PTZ control using mouse or joystick makes it easy to track objects of interest.

AXIS 232D+, with its automatic or manually removable IR-cut filter, can capture color video in light conditions down to 0.3 lux, and black and white video in conditions as low as 0.005 lux.

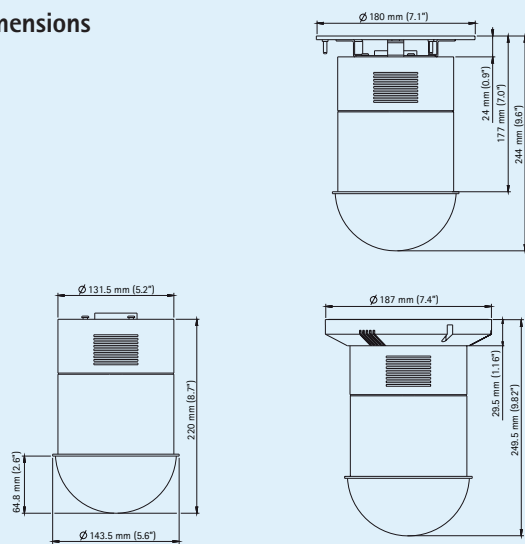


## Technical specifications – AXIS 232D+ Network Dome Camera

Camera		Network	
<b>Models</b>	AXIS 232D+ 60 Hz AXIS 232D+ 50 Hz	<b>Security</b>	Password protection, IP address filtering, HTTPS encryption, IEEE 802.1X network access control
<b>Image sensor</b>	1/4" Exview HAD CCD	<b>Supported protocols</b>	IPv4/v6, HTTP, HTTPS, QoS Layer 3 DiffServ, FTP, SMTP, Bonjour, UPnP, SNMPv1/v2c/v3 (MIB-II), DNS, DynDNS, NTP, RTSP, RTP, TCP, UDP, IGMP, RTCP, ICMP, DHCP, ARP, SOCKS
<b>Lens</b>	f=4.1 – 73.8 mm, F1.4 – 3.0, autofocus, manual/automatic day/night Horizontal angle of view: 48° – 2.8°	<b>System integration</b>	
<b>Minimum illumination</b>	Color: 0.3 lux at 30IRE F1.4 B/W: 0.005 lux at 30IRE F1.4	<b>Application Programming Interface</b>	Open API for software integration, including VAPIX® from Axis Communications available at <a href="http://www.axis.com">www.axis.com</a>
<b>Shutter time</b>	1/10000 s to 1 s	<b>Intelligent video</b>	Video motion detection
<b>Pan/Tilt/Zoom</b>	18x optical and 12x digital zoom, total 216x zoom Pan: 360° endless, 360°/s pan speed Tilt: 0° – 90° (± 3°), 360°/s tilt speed 50 preset positions Guard tour Supports Windows compatible joysticks	<b>Alarm triggers</b>	Intelligent video and external input
<b>Video</b>		<b>Alarm events</b>	File upload via FTP, HTTP and email Notification via email, HTTP and TCP External output activation
<b>Video compression</b>	MPEG-4 Part 2 (ISO/IEC 14496-2) Motion JPEG	<b>Video buffer</b>	9 MB pre- and post alarm
<b>Resolutions</b>	704x480 to 176x120 (60 Hz) 704x576 to 176x144 (50 Hz)	<b>General</b>	
<b>Frame rate MPEG-4</b>	Up to 30/25 fps (60/50 Hz) at 2CIF/CIF/QCIF	<b>Processors and memory</b>	ETRAX 100 LX, ARTPEC-2, 32MB RAM, 8MB Flash
<b>Frame rate Motion JPEG</b>	Up to 30/25 fps (60/50 Hz) in all resolutions	<b>Power</b>	24 – 36 V DC, max 28 W 19 – 28 V AC, max 25 VA
<b>Video streaming</b>	Simultaneous MPEG-4 and Motion JPEG Controllable frame rate and bandwidth VBR/CBR MPEG-4	<b>Connectors</b>	RJ-45 Ethernet 10BASE-T/100BASE-TX PoE, Terminal block for 4 alarm inputs and 4 outputs
<b>Image settings</b>	WDR (Wide Dynamic Range), compression, brightness, sharpness, white balance, exposure control Text and image overlay De-interlacing	<b>Operating conditions</b>	5 – 50 °C (41 – 122 °F) Humidity 20 – 80% RH (non-condensing)
		<b>Approvals</b>	EN 55022 Class B, EN 55024, EN 61000-3-2, EN 61000-3-3, FCC Part 15 Subpart B Class A, VCCI Class A, ICES-003 Class A, C-tick AS/NZS CISPR 22 Class A, EN 60065 Power supply: EN 60950-1, UL, CSA
		<b>Weight</b>	1.8 kg (4.0 lb)
		<b>Included accessories</b>	Power supply, mounting brackets for hard and drop ceiling mount, smoked and transparent covers, Installation Guide, CD with installation tools, recording software and User's Manual, Windows decoder 1-user license

More information is available at [www.axis.com](http://www.axis.com)

### Dimensions



### Optional accessories

Various housings



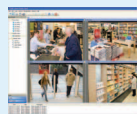
Outdoor mains power adaptor



AXIS T8310  
Video Surveillance Control Board



AXIS T90A Illuminators



For information on AXIS Camera Station and video management software from Axis' Application Development Partners, see [www.axis.com/products/video/software/](http://www.axis.com/products/video/software/)