

# INSTALLATION GUIDE

## AXIS Camera Station

## About this Guide

This guide is intended for administrators and users of AXIS Camera Station, and is applicable for software release 4.0 and later. It covers the installation of AXIS Camera Station Server and AXIS Camera Station Client as well as instructions for using and managing AXIS Camera Station on your network. Later versions of this document will be posted to the Axis Website, as required. See also the product's help pages.

## Intellectual Property Rights

Axis AB has intellectual property rights relating to technology embodied in the product described in this document. In particular, and without limitation, these intellectual property rights may include one or more of the patents listed at <http://www.axis.com/patent.htm> and one or more additional patents or pending patent applications in the US and other countries.

## Legal Considerations

Camera surveillance can be prohibited by laws that vary from country to country. Check the laws in your local region before using this product for surveillance purposes.

## Liability

Every care has been taken in the preparation of this manual; Please inform your local Axis office of any inaccuracies or omissions. Axis Communications AB cannot be held responsible for any technical or typographical errors and reserves the right to make changes to the product and manuals without prior notice. Axis Communications AB makes no warranty of any kind with regard to the material contained within this document, including, but not limited to, the implied warranties of merchantability and fitness for a particular purpose. Axis Communications AB shall not be liable nor responsible for incidental or consequential damages in connection with the furnishing, performance or use of this material.

## Trademark Acknowledgments

AXIS COMMUNICATIONS, AXIS, ETRAX, ARTPEC and VAPIX are registered trademarks or trademark applications of Axis AB in various jurisdictions. All other company names and products are trademarks or

registered trademarks of their respective companies. Microsoft, Windows, WWW, Internet Explorer, DirectX, Intel, Intel Core and Xeon are registered trademarks of the respective holders.

## Support

Should you require any technical assistance, please contact your Axis reseller. If your questions cannot be answered immediately, your reseller will forward your queries through the appropriate channels to ensure a rapid response. If you are connected to the Internet, you can:

- download user documentation and software updates
- find answers to resolved problems in the FAQ database. Search by product, category, or phrase
- report problems to Axis support staff by logging in to your private support area
- chat with Axis support staff (selected countries only)
- visit Axis Support at [www.axis.com/techsup](http://www.axis.com/techsup)

# AXIS Camera Station Installation Guide

## System recommendations

System recommendations for AXIS Camera Station. Hardware requirements are strongly dependent on the number of cameras. For latest information, recommendations for different system sizes and supported operating systems, see the hardware guidelines and release notes available at [www.axis.com/techsup](http://www.axis.com/techsup).

### AXIS Camera Station Client:

- Windows® 8 Pro 64-bit
- CPU: Intel® Core™ i7
- RAM: 8 GB
- Graphics card with 1 GB onboard video memory and multiscreen support
- Network: 1 Gbps
- Microsoft® .NET runtime environment (included in installation package)

### AXIS Camera Station Server:

Use a server with recording capacity of 32 MB/s (256 Mbps) for up to 100 cameras.

- Windows® 8 Pro 64-bit
- CPU: Intel® Core™ i7
- RAM: 8 GB
- Network: 1 Gbps
- Hard drives: SATA 6 Gb/s 7200 RPM Enterprise Class - Up to 10 cameras in 1080p per drive
- Uninterruptible power supply (UPS)
- Microsoft® .NET runtime environment (included in installation package)

- Note:**
- Use the latest graphics card drivers.
  - Use the latest service pack from Microsoft.
  - Additional monitors may require extra processing power.
  - Integrated graphics cards on motherboards with shared memory are not supported.

## Overview

This Installation Guide provides instructions for installing AXIS Camera Station.

The installation includes AXIS Cameras Station Client and AXIS Camera Station Server. AXIS Cameras Station Client provides access to recordings and live video and can be installed on the same computer as the server or on a different computer. It is recommended to install AXIS Camera Station Server on a dedicated computer for best performance and stability.

AXIS Camera Station is a monitoring and recording system optimized to take full advantage of Axis network cameras and video encoders. For a detailed description of the software, see the built-in help files and AXIS Camera Station User Manual. The User Manual is available on the CD and on [www.axis.com](http://www.axis.com)

## Install AXIS Camera Station Software

The software can be installed from the Internet or from the CD.

From the Internet:

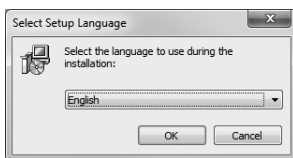
1. Go to [www.axis.com/products/video/software](http://www.axis.com/products/video/software) and create an account.
2. Download the latest version of AXIS Camera Station and
3. Go to *Start the installation*.

From the CD:

1. Insert the CD in the CD drive. If the installation CD does not start automatically, click start.exe in the CD's root folder.
2. From the CD's interface, select **AXIS Camera Station**, select the **Software** tab and click **Install Software**.
3. Go to *Start the installation*.

Start the installation:

1. Select the language to install.



**Note:** You may be prompted to:

- install .NET Framework. Follow the Installation Wizard's instructions
  - update the computer's graphics card driver.
2. Read and accept the license agreement.
  3. Select where to install the program or accept the default folder.
  4. Select components to install from the drop-down list. Full installation includes AXIS Camera Station Client and Server. If you intend to install AXIS Camera Station Server on another computer you can choose to install only AXIS Camera Station Client.
  5. Follow the final steps in the Installation Wizard.

## Network Configuration

AXIS Camera Station can record and play back video from cameras and video encoders that are connected to a LAN (Local Area Network) or to a WAN (Wide Area Network). Depending on the installation, follow the instructions under *Network & Security Configuration* in AXIS Camera Station User Manual.

## Start AXIS Camera Station Client

To start AXIS Camera Station Client:

- **Windows 8, Windows Server 2012:** Go to the Start screen and type "AXIS Camera Station"
- **Windows 7, Windows Vista, Windows Server 2008:** Go to Start > All Programs > AXIS Camera Station > AXIS Camera Station Client

When starting the Client for the first time, the Client automatically attempts to log on to the AXIS Camera Station Server installed on the same computer as the Client.

### Server installed on another computer

To log on to an AXIS Camera Station Server that is installed on another computer than the AXIS Camera Station Client:

1. Select **Remote server** and enter the address or hostname of the AXIS Camera Station Server to connect to.
2. Click **Log On**. The **Credentials** dialog opens.
3. Select **Log on as current user** or enter your **User name** and **Password**.
4. Click **OK**.



**Note:** If the Server is configured to accept Clients on a different port than the default port 55752, enter the address followed by the port number. For example, 192.168.0.5:46001

## Configure Client Proxy Settings

If AXIS Camera Station Client and AXIS Camera Station Server are separated by a proxy server, the client proxy settings need to be configured:

1. From the Log On screen, click **Change client proxy settings** in the lower right corner.
2. Enter the proxy settings. Click **Help** for a description of the options.

## AXIS Camera Station Activation

The first time you start AXIS Camera Station you will be asked to select and activate a license.

- Select **Licensed Version** to install purchased licenses and activate the AXIS Camera Station software.
- Select **Trial** to activate a free version with full functionality but limited to 30 days.
- Select **AXIS Camera Station One** to activate a free version with limited functionality (only one video channel).

The purchased software includes a **base license** for 4 or 10 cameras and optional upgrade licenses for additional video channels (1, 5 or 20).

A purchased License Key can only be used for one installation. The License Key is your proof of purchase. Keep it in a safe place for future reference.

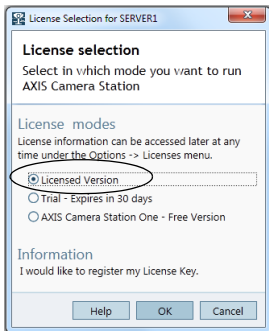
To find the status of your licenses, activation dates and expiry dates for grace periods and support go to **Options > Licenses**.

**MyAxis** ([www.axis.com/reg](http://www.axis.com/reg)) also shows your registered licenses and activation dates.

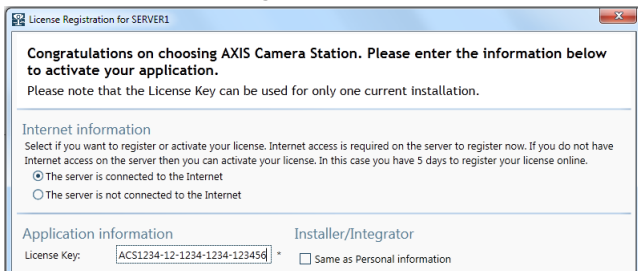
## Internet connection: Register automatically

If AXIS Camera Station is installed on a computer with Internet access you can register automatically. Your license information is sent directly to the Axis Web server.

1. Select **Licensed Version** and click on the **OK** button.



2. Select the option **The server is connected to the Internet** and fill in the requested information. The License Key is found in the AXIS Camera Station CD casing. Click **Register**.



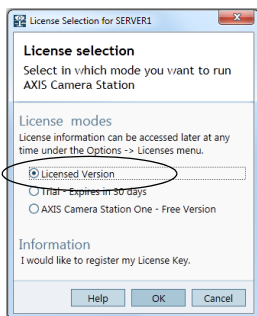
3. Install the remaining purchased licenses.
4. The license information will be sent to Axis Communications and your software will be activated automatically.
5. You can now start using AXIS Camera Station.



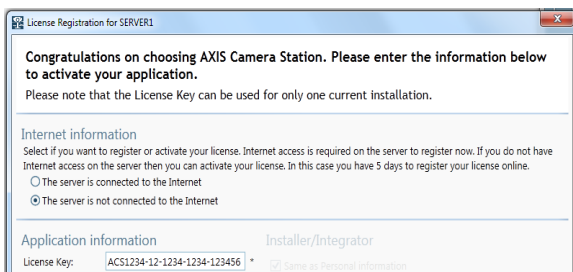
## No Internet connection: Register manually

If AXIS Camera Station is installed on a computer without (or with low-speed) access to the Internet, you can acquire the Access code that is needed to activate the software from the Axis Web site and enter it manually.

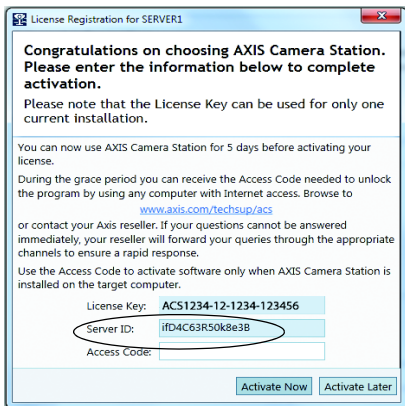
1. Select **Licensed Version** and click on the **OK** button.



2. Select the option **The server is not connected to the Internet** and enter the License Key.
3. Click **Activate**.



4. A dialog opens with the **Server ID**, make a note of it. You will need the Server ID when filling in information on the Internet form to receive an Access code. Note that you must type the **Server ID** exactly how it was displayed.

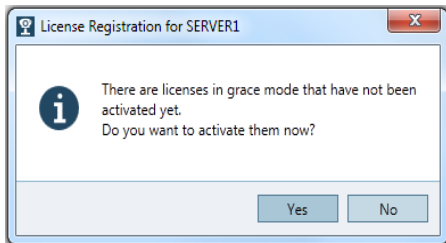


5. If you have received the access code, click **Activate Now**. Otherwise click **Activate Later** to use AXIS Camera Station in Grace mode for 5 days.

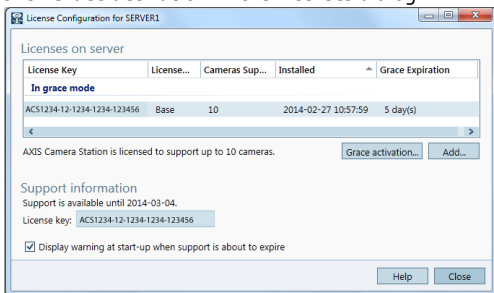
## Activate licenses in Grace mode

During the grace period you can receive the Access code by using any computer with Internet access. Browse to [www.axis.com/techsup/acs](http://www.axis.com/techsup/acs), fill in the requested information and click **Submit**. You will be given an access code.

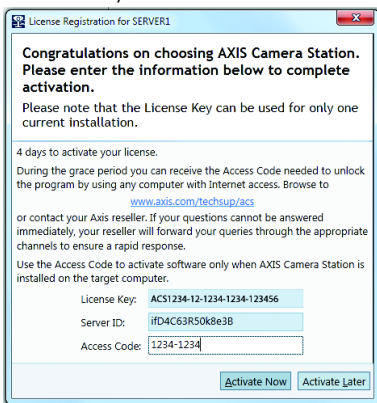
1. When you have received the access code, start AXIS Camera Station Client and select **Yes** in the License Registration dialog.



2. Click **Grace activation** in the Licenses dialog.



3. Enter the Access code. License Key and Server ID are filled in automatically.



4. Click **Activate Now**.

## Switch to Licensed Version

If you are currently running the Trial version or AXIS Camera Station One and wish to switch to the full version of AXIS Camera Station, you can register your license by selecting **Options > Licenses** from the main menu.

Follow the instructions for "*Internet connection: Register automatically*" described on page 8 or "*No Internet connection: Register manually*" described on page 9.

## Get Started

When starting AXIS Camera Station for the first time, **Get Started with AXIS Camera Station** is started automatically. **Get Started with AXIS Camera Station** provides a quick way to add cameras and to configure and enable recording:

1. Select cameras and video encoders to add.
2. Select recording methods and where to store recordings.
3. Review settings and click **Finish** to add cameras and start recording.

For more information, see the built-in help and AXIS Camera Station User Manual.

## Navigate in AXIS Camera Station Client

AXIS Camera Station Client is divided into workspaces. To navigate between workspaces, click the buttons in the toolbar.



**Live View** - Live video from connected cameras and video encoders.



**Recordings** - Search, play and export recordings.



**Camera Management**- Administration and maintenance of connected devices.



**Logs** - Alarm, event and audit logs.



**Configuration** - A collection of the most important configuration settings.



