



# Arecont Vision

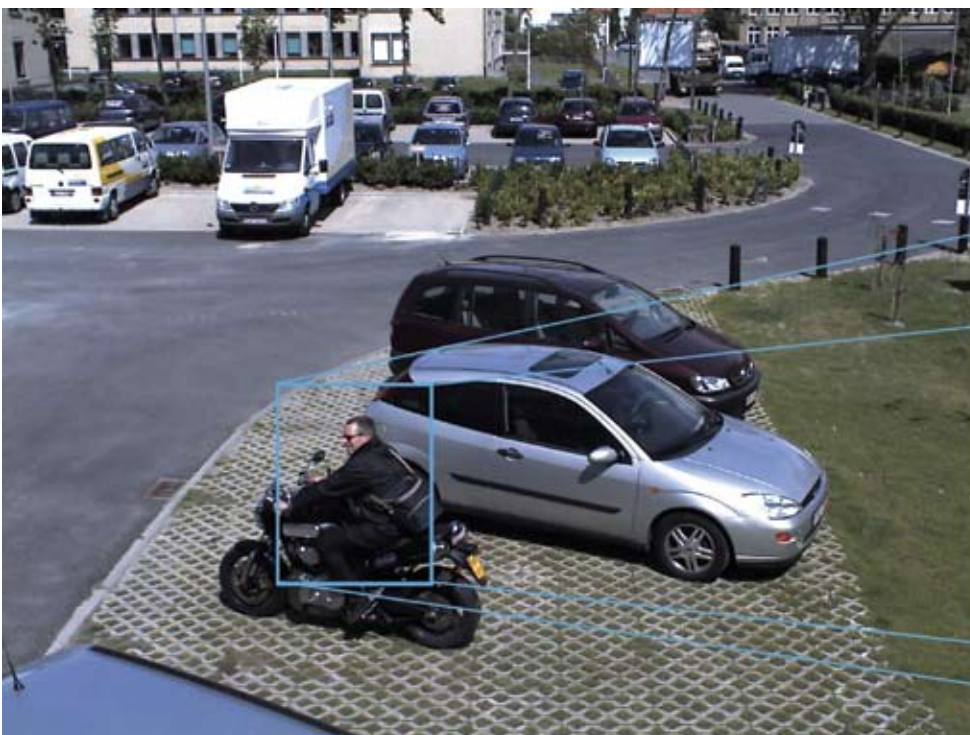
Megapixel IP Cameras

2 Mpixel IP-camera sensitive to 0.1 lux @ F 1.4  
Frame Rate 24 fps @ Resolution 1,600 x 1,200

Made in the USA

The AV2100 Series offers cinema compatible high frame rates to allow real time high definition digital video surveillance with 6 times the resolution of the best analog surveillance cameras.

- **GREAT HIGH RESOLUTION & FULL MOTION:** AV2100 Series network camera delivers full motion progressive scan 1600 x 1200 video at 24 fps featuring massively-parallel MegaVideo® image processing architecture capable of sustaining over 6 billion operations per second.
- **GREAT COST EFFICIENCY:** High resolution and crystal clear imagery allows the AV2100 Series to substitute up to six analog cameras; thereby reducing the total cost of installation. No need to supply a separate power source since the power can be drawn from a low cost Power-over-Ethernet switch.
- **GREAT FORENSIC ZOOMING:** AV2100 Series provides the ability to zoom in after any event from high resolutions digital archives. You can also simultaneously view zoomed and full field of view images.
- **24-HOUR SURVEILLANCE WITH DAY/NIGHT FEATURE:** The MegaVideo® single sensor Day/Night feature is especially useful where you need to capture images under highly variable lighting conditions - such as brilliant mid-day sun, and dim night. In daytime illumination, the camera operates in normal color mode providing vivid images, then automatically changes to black-and-white mode using IR cut filter removal technology when the light fades at dusk. The transition from day to night is fully programmable, or can be forced to either day or night mode.
- **ONBOARD MOTION DETECTION:** Onboard real-time motion detection with size and sensitivity controls for up to 64 separate motion detection zones.



**daynight**  
MegaVideo® Technology Delivers Full Motion  
HDTV Resolution at NTSC Price



AV2100 SERIES

www.arecontvision.com  
detailmatters

### Model Numbers

- AV2100M  
2 Megapixel Camera
- AV2100DN  
2 Megapixel Day/Night Camera with Automatic IR Cut Filter
- AV2100AI  
2 Megapixel Camera w/Auto Iris

### Imaging

- 2Megapixel CMOS Image Sensor
- 1600(H) x 1200(V) Pixel Array
- 1/2" Optical Format
- 4.2 µm Pixel Pitch
- Bayer Mosaic RGB Filter
- Sensitivity 0.1 lux @ F1.4
- Dynamic Range 60 dB
- Maximum SNR 41 dB

### Data Transmission

- Data Rate up to 55Mbps
- Video Frame Rate up to:
  - 24 fps @ 1600x1200
  - 30 fps @ 1280x1024
- Motion JPEG with 20 Levels of Quality
- TFTP and HTTP Image Transmission Protocols
- 100Base-T Ethernet Network Interface

### Programmability

- Auto Exposure (AE) and Gain Control (AGC) >120dB
- On-Camera Motion Detection With 64 Detection Zones
- Auto Backlight Compensation
- Auto Multi-Matrix White Balance
- 50/60Hz Selectable Flicker Control
- Electronic Pan, Tilt, Zoom (PTZ)
- Electronic Image Rotation - Up-Side Down image Turn
- Resolution Windowing Down to 32x32 Pixels Window
- Programmable Motion Blurring Control for Low-Light Mode
- MoonLight™ Mode - Extended Exposure and Proprietary Noise Cancellation
- Programmable Resolution, Brightness, Saturation, Gamma, Sharpness, Tint
- Picture-in-Picture: Simultaneous Delivery of Full Field of View and Zoomed Images
- Bandwidth & Storage Savings by Running at 1/4 resolution

### Electrical

- Opto-Coupled Alarm Input, Opto-Coupled Alarm and Flash Sync Output
- Power over Ethernet (PoE) or DC Input
- PoE 802.3af/auxiliary 12V-48V DC
- Power Consumption 3 Watts Maximum
- Optional DC AI Connection

### Regulatory Approvals

- FCC and CE Compliant

### Mechanical

- 3" W x 2.5" H x 2.25" D (w/o lens)
- 8.6 oz or 243 grams (w/o lens)
- C/CS Lens Mount

### Environmental

- Operating Temperature 0°C to +50°C
- Storage Temperature -20°C to +60°C
- Humidity 0% to 90% (non condensing)

