



Mx-c26A with lens B016 Mx-c26A with lens B036 MxIOBoard-IC for signal inputs/outputs (accessory)

- Mx6 system platform with H.264 and ONVIF compatibility
- Includes MxAnalytics video analysis tools out-of-the-box
- Recording on internal MicroSD card (SDXC, SDHC installed)
- Audio package variant (with microphone and speaker) available
- Sensor for temperature integrated
- Installation is as simple as installing a ceiling spotlight

Compact Hemispheric Camera for Ceilings

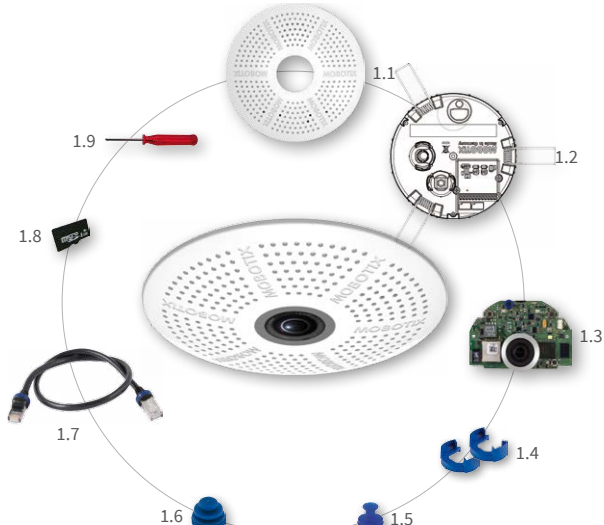
MOBOTIX 6MP camera for unobtrusive indoor applications, available as Day or Night version with MX-B016 (Hemispheric) or MX-B036 (103°) lens.

More information:
www.mobotix.com > Products > Indoor Cameras > Hemispheric c26

Mx-c26A
32.851-001_EN_05/2017

MOBOTIX

c26 Standard Delivery



Item	Count	Part Name
1.1	1	Housing (installed)
1.2	1	Back plate with spring clips (installed)
1.3	1	Main board with lens MX-B016 or MX-B036 (installed)
1.4	2	Bayonet catch, blue (installed)
1.5	1	USB plug, blue (installed)
1.6	1	Ethernet plug, blue (installed)
1.7	1	Ethernet patch cable, 50 cm/19.7 in, black
1.8	1	MicroSD card pre-installed (SDHC installed, SDXC supported)
1.9	1	Disassembly tool

Connection and Initial Operation of the c26



You can find detailed information on the **installation** and **connections** of the c26 in the *Q25 Camera Manual* (PDF, available on www.mobotix.com > Support > Manuals).



Please note that the boot options of this camera have changed compared to its predecessor (see «*Boot Options of the c26*» on page 2) and the camera only has one key. Regarding the rest of the **initial operation** of the c26, please see the *Q25 Camera Manual* in Chapter 3, «*Initial Operation*». Use a suitable device for operating the camera key (e.g., an opened paper clip).

Inserting/Exchanging the SD Card

All camera models can use the integrated MicroSD card (SDXC) to record video data. In order to exchange the MicroSD card, please proceed as outlined in the following instruction. For information on reliable SD cards, please see the MOBOTIX website www.mobotix.com > Support > MxMedia Library > Planning in the document *MicroSD Card Whitelist for MOBOTIX Cameras*. If the camera has not yet been installed, skip step 1.

Caution: In order to avoid damage from electrostatic discharge, you should touch a grounded device before opening the housing of the camera (e.g., the blank metal at the back of a computer). This will remove any static electricity that may have built up.

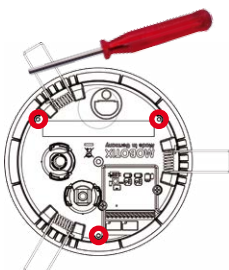
1. Remove camera, remove cables

Pull the camera from its position by gently pulling the camera downward on one side, then the other side. **Take care to NOT let the spring clips snap forward (this may hurt you!).** Remove all cables that are attached to the connectors on the back side.



2. Locate the locks

In order to remove the back plate, you will need to push the delivered disassembly tool (item 1.9) into the three holes on the back one after the other to release the locks (see red circles in figure).



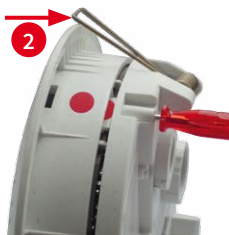
3. Remove back plate

Insert the disassembly tool into a lock and press firmly until you feel a perceptible resistance **1**.



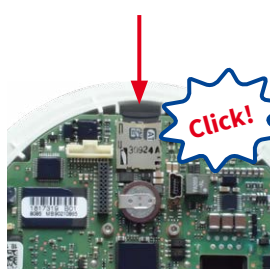
Gently push against the nearest spring clip to push the lock out of its seat and to lift the back plate from the housing **2**.

Repeat the process for the two other locks and cautiously lift the back plate from the housing.



4. Remove/insert SD card

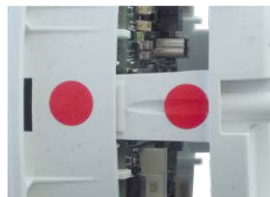
If a MicroSD card has been installed, gently press with your finger as indicated by the arrow until you hear a **click**. Then release the SD card. The card is protruding slightly and can be easily removed.



Insert the new MicroSD card and gently press with your finger as indicated by the arrow until you hear the **click**.

5. Attach back plate

Make sure that the SD card is properly locked in place, since the card can be damaged otherwise. Begin by inserting the wide lock (next to the SD card) into the camera housing as shown. From the factory, the lock and the corresponding slot are highlighted by **color mark**.



Make sure that the two other locks are also properly positioned, then press the back plate into its seat until you hear all three locks click into place.



6. Re-connect the cables

Insert the Ethernet cable and – if installed – the USB cable into the corresponding sockets and secure the connectors using the blue bayonet catches.



Press the spring clips back and insert the camera into its original mounting position (see «*Installing the c26*»).

To finish, make sure that the camera image is properly aligned: If required, cautiously turn the camera to adjust image alignment.

Installing the MxIOBoard-IC

For the c26, you can use the optionally available MxIOBoard-IC to attach external sensors using the signal inputs and to switch other devices via the signal outputs.

1. Insert the MxIOBoard-IC

On the back of the camera, remove the sticker that protects the receptacle and the camera's interior from collecting dirt (see red arrow in figure to the right).



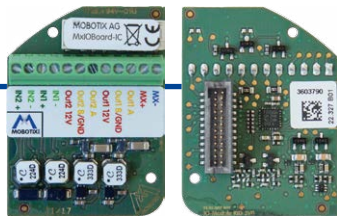
Carefully push the module board onto the receptacle.



When attaching the connection wires to the MxIOBoard-IC, make sure the wires are guided to a cable tie and tie the wires to the network cable, for example).

2. Attach the connection cables


Attach the connection wires as shown in the terminal connector overview.



Between the connector and the wires as shown in the terminal connector.

Terminal Connectors

MX-
MX+
Out1 A
Out1 B / GND
Out1 12V
Out2 A
Out2 B / GND
Out2 12V
IN1 -
IN1 +
IN2 -
IN2 +



MxBus functionality is only available with a later hardware release of the camera.

Output 1 A	Relay pot.- free	-	Out- puts
Output 1 B / GND		Output 1 12 V	
Output 1 12 V	-	-	
Output 2 A	Relay pot.- free	-	Out- puts
Output 2 B / GND		Output 2 12 V	
Output 2 12 V	-	-	
Input 1 -	Inputs		
Input 1 +			
Input 2 -			
Input 2 +			

Installing the c26

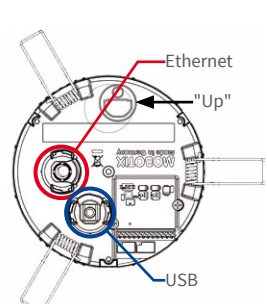
Use the drilling template on the back for this purpose (red circle) or draw a circle with 105 mm/4.13 in diameter for the cut-out. Cut out the hole for the camera, then guide the Ethernet cable and any other cables you want to attach to the camera through the hole.



1. Connect the cables

Insert the cables into the appropriate connectors and fasten them using the blue bayonet catches.

Make sure that the camera points into the desired direction: The icon on the back (black arrow) shows the "up" direction of the image.



2. Install the c26

Press the spring clips back and insert the c26 into the hole for the camera. The spring clips will snap outwards, thus firmly holding the camera in place.

Make sure that you only press back the spring clips as shown in the image. Do not press them back any further as the springs may snap out of their fixtures otherwise.



Removing the c26

1. Pull out the camera

Pull the camera from its position by gently pulling the camera downward on one side, then the other side. **Take care to NOT let the spring clips snap forward (risk of injury!).**

2. Remove the cables

Remove the cables coming from the building (network cable, USB cable and signal input/output wires). Pull out the camera.



MOBOTIX

Initial Operation of the c26



The initial operation starts with connecting the power supply (see section «*Network and Power Connection, Additional Cables*» in the *Q25 Camera Manual*). The first access follows the procedure described in the same manual in the section «Initial Operation of the Camera». All other tasks require access to the camera's user interface in the browser. Enter the camera's IP address into the address bar of the browser.

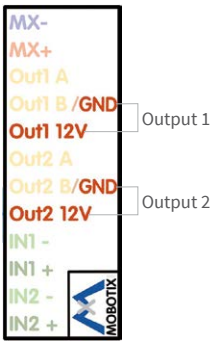


1. Configuring and Using the MxIOBoard-IC

The camera will automatically detect an installed MxIOBoard-IC (see **Camera Status, System** section in browser).

The signal inputs can be used right away in the **signal input profiles** in the **Setup Menu > Event Overview**. Likewise, the signal outputs can be used in the **signal output profiles** in **Admin Menu > Hardware Configuration > Signal Out Profiles**.

In addition, the signal inputs/outputs have been entered automatically in the **Admin Menu > Assign Wires** dialog and can be used to control doors and lights.



To use one or both signal outputs not as potential-free outputs (for relays), but as **12 V outputs**, open the **Admin Menu > Hardware Configuration > Manage Hardware Expansions** dialog. In the **MxBus/IO Board** section, click on **Connect** for each output you want to use.

2. Save the configuration

In the live image of the browser, select the **Manage Settings** quick control and set **Store Entire Configuration** as value. The camera stores the configuration in the permanent camera memory so that the settings will be applied at the next camera reboot.

Boot Options of the c26

By default, the camera starts as DHCP client and automatically tries to get an IP address from a DHCP server. To start the camera in a mode different from the default mode, you can activate the boot menu of the camera.

1. Prepare the Camera

- Disconnect the camera's power supply.
- Make sure that you have suitable item such as a paper clip at hand, **but never use sharp or pointed objects!**
- Reconnect the power supply of the camera.

2. Activate the Boot Menu

The red LED lights up 5 to 10 seconds after establishing the power supply and will stay on for 10 seconds. Briefly press the key by inserting the paper clip into the hole indicated by the red circle in the figure. The camera enters the boot menu, ready for selecting one of the boot options.



The LED now flashes once and repeats the flash signal after pausing for one second (the number of flashes indicates the current boot option). To go to the next boot option, briefly press the key again (< 1 sec). After the last boot option, the camera returns to the first option (LED flashes once).

LED flashes	Boot Option	Meaning	Audio Confirmation*
1 x	Auto Configuration	Starts the auto configuration in order to operate this camera as a door station (not supported on all camera models).	Phone ringing
2 x	Factory Defaults	Starts the camera with factory defaults (factory default IP address, users and passwords will not be reset).	Boing
3 x	Automatic IP Address	Starts the camera as DHCP client and tries to obtain an IP address from a DHCP server. If a DHCP server cannot be found or no IP address can be obtained, the camera starts with its factory default address.	Boing Boing
4 x	Recovery System	Starts the camera with the recovery system, e.g., in order to recover from a failed update of the camera software.	Alarm Sound
*Only on cameras with audio option and installed speaker.			

3. Select a Boot Option

Press the paper clip longer (> 2 sec) into the hole. The camera confirms the selection by flashing rapidly three times. You can now remove the paper clip. After 20 sec, the camera will confirm the selection by playing a sound according to the table above.

If nothing is selected, the camera will resume its normal boot process after a certain time.

Important Notes

Safety Warnings

Notes on Installing:

- This product must not be used in locations exposed to the dangers of explosion.
- Make sure that you install this product as outlined in the instructions of this Quick Install document. A faulty installation can damage the camera!
- When installing this product, make sure that you are only using genuine MOBOTIX parts and MOBOTIX connection cables.
- Only install this product on suitable, solid materials that provide for a sturdy installation of the fixing elements used.



Electrical installation: Electrical systems and equipment may only be installed, modified and maintained by a qualified electrician or under the direction and supervision of a qualified electrician in accordance with the applicable electrical guidelines. Make sure to properly set up all electrical connections.



Electrical surges: MOBOTIX cameras are protected against the effects of small electrical surges by numerous measures. These measures, however, cannot prevent the camera from being damaged when stronger electrical surges occur. Special care should be taken when installing the camera outside of buildings to ensure proper protection against **lightning**, since this also protects the building and the whole network infrastructure.



Never touch the lens: Due to the high performance of the c26, the area of the image sensor **can get quite hot**, especially when the ambient temperature is also high. This does not affect the proper functioning of the camera in any way. For this reason, the product must not be installed within the reach of persons.



Power off before opening the camera: Make sure the power supply to the camera is disconnected before opening the camera housing (e.g., when exchanging the SD card or when opening the body to attach wires).



Network security: MOBOTIX products include all of the necessary configuration options for operation in Ethernet networks in compliance with data protection laws. The operator is responsible for the data protection concept across the entire system. The basic settings required to prevent misuse can be configured in the software and are password-protected. This prevents unauthorized parties from accessing these settings.



Legal Notes

Legal aspects of video and sound recording: You must comply with all data protection regulations for video and sound monitoring when using MOBOTIX products. Depending on national laws and the installation location of the c26, the recording of video and sound data may be subject to special documentation or it may be prohibited. All users of MOBOTIX products are therefore required to familiarize themselves with all applicable regulations and to comply with these laws. MOBOTIX AG is not liable for any illegal use of its products.



Disposal

Electrical and electronic products contain many valuable materials. For this reason, we recommend that you dispose of MOBOTIX products at the end of their service life in accordance with all legal requirements and regulations (or deposit these products at a municipal collection center). MOBOTIX products must not be disposed of in household waste! If the product contains a battery, please dispose of the battery separately (the corresponding product manuals contain specific directions if the product contains a battery).



Disclaimer

MOBOTIX AG does not assume any responsibility for damages, which are the result of improper use or failure to comply to the manuals or the applicable rules and regulations. Our **General Terms and Conditions** apply. You can download the current version of the General Terms and Conditions from our website at www.mobotix.com by clicking on the **COS** link at the bottom of every page.



Technical Specifications c26

Model Variants	<ul style="list-style-type: none">• Mx-c26A-6D016/036 (daylight image sensor, color)• Mx-c26A-6N016/036 (night image sensor, Black&White)• Mx-c26A-AU-6D016/036 (audio package, daylight image sensor, color)• Mx-c26A-AU-6N016/036 (audio package, night image sensor, Black&White)
Lens Options	<ul style="list-style-type: none">• B016 (180° horizontal image angle)• B036 (103° horizontal image angle)
Sensitivity	<ul style="list-style-type: none">• Color sensor (daylight): 0.1 lx @ 1/60s; 0.005 lx @ 1s• Black&White sensor (night): 0.02 lx @ 1/60s; 0.001 lx @ 1s
Image Sensor	1/1.8" CMOS, 6MP (3072x2048), Progressive Scan
Max. Image Size	6MP (3072x2048)
Image Formats	Freely configurable 4:3, 8:3, 16:9 or custom formats (image cropping), e.g., 2592x1944 (5MP), 2048x1536 (QXGA), 1920x1080 (Full-HD), 1280x960 (MEGA)
Max. Frame Rate	<ul style="list-style-type: none">• MxPEG: 42@HD(1280x720), 34@Full-HD, 24@QXGA, 15@5Mp, 12@6MP• M-JPEG: 26@HD(1280x720), 13@Full-HD, 9@QXGA, 5@5Mp, 4@6MP• H.264: 25@Full-HD, 20@QXGA
Video Codec	<ul style="list-style-type: none">• MxPEG, M-JPEG, JPEG (max. output size 6MP)• H.264 (max. output size QXGA, bandwidth limitation applicable)
DVR	<ul style="list-style-type: none">• In the camera on MicroSD card (SDXC, SDHC pre-installed)• External, on USB device• External, on NAS• Separate live image and full image recording – MxFFS with archiving function• Pre- and post-alarm images• Automatic DVR monitoring with error notification
Software	MxManagementCenter
Image Processing	MxLEO, backlight compensation, automatic white balance, distortion correction

ONVIF	Compatible
PTZ	Digital pan/tilt/zoom, continuous up to 8X
Alarm/Events	Temperature sensor, microphone (Mx-c26A-AU only), additional sensors/IOs via MxMessageSystem, notification via e-mail, FTP, IP telephony (VoIP, SIP)
Intelligent Video Analysis	MxActivitySensor, video motion analysis, MxAnalytics
Audio (only Mx-c26A-AU with audio package)	<ul style="list-style-type: none">• Microphone/speaker, both 16bit/16kHz (HD wideband audio)• Lip-synchronous audio, audio recording• VoIP/SIP telephony, intercom, remote controlling using key codes
Interfaces	Ethernet 100BaseT (MxRJ45), MiniUSB (MxMiniUSB)
Security	User/group management, HTTPS/SSL, IP address filter, IEEE 802.1x, intrusion detection, digital image signature, MxFFS
Certifications	EN55022:2010; EN55024:2010; EN50121-4:2015, EN61000-6-1:2007; EN 61000-6-2:2005, EN61000-6-3:2007+A1:2011, EN61000-6-4:2007+A1:2011, AS/ NZS CISPR22:2009+A1:2010, CFR47 FCC Part15B
Power Supply	Power over Ethernet IEEE 802.3af
Power Consumption	Typ. 4W
Protection Classes	IP20, IK06
Ambient Temperature	0 to 40 °C/32 to 122 °F
Dimensions	Outside diameter 120 mm/4.72 in, total height 51 mm/2.01 in with B016, 56 mm/2.21 in with B036, height installed 15 mm/0.59 in with B016, 20 mm/0.79 in with B036, cut-out diameter 105 mm/4.13 in, rec. min. installation depth 55 mm/2.17 in
Weight	Approx. 212 g

Forms of c26



Mx-c26A with lens B016



Mx-c26A with lens B036

Dimensions/Drilling Template

