

## AXIS T92E Housing Series

Smart features for wide ranging of environments.



- > Dual shell
- > IP66- and NEMA 4X-rated
- > IK10-rated
- > One cable installation
- > Arctic Temperature Control

AXIS T92E Housing Series protects the Axis network camera in adverse indoor and outdoor conditions.

AXIS T92E Housing Series is available in two models: AXIS T92E05 Protective Housing and AXIS T92E20 Outdoor Housing.

AXIS T92E20 features an internal shell for storing heat in cold environments. Fan ventilation for hot environments transfers excess to the outer chassis for efficient cooling.

AXIS T92E05/T92E20 feature IP66 and NEMA 4X protection rating against the ingress of dust, wind-blown dust, rain, high pressure water jets from any direction, hose-directed water, and damage from external ice formation. In addition, they are IK10-rated for protection against impact and vandal acts.

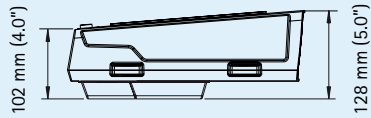
Easy and quick installation using either Power over Ethernet or High Power over Ethernet connection. The network cable is further protected in the wall mount to enhance the vandal protection.

The Arctic Temperature Control functionality ensures that the cameras can start up even at  $-40^{\circ}\text{C}$  ( $-40^{\circ}\text{F}$ ) following a power failure.

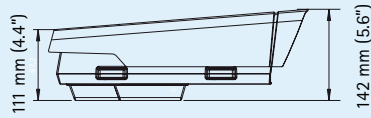
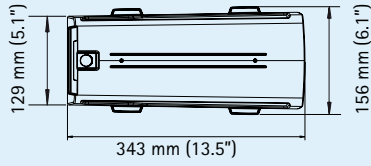
Various brackets and accessories are available for AXIS T92E Housing Series, such as ceiling and wall brackets, column mounts and adapters. AXIS T92E Series comes with a wall bracket with an internal cable channel and ball joint.



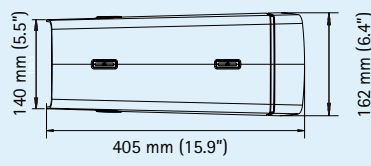
## Dimensions: T92E Housing Series and wall mount bracket with internal cable channel



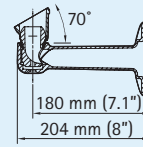
Without sunshield



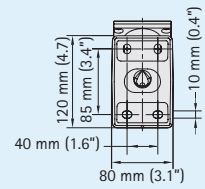
With sunshield



Max. inclination



Wall mount bracket



Back side of wall mount bracket

## Optional mounting accessories

### Wall brackets

VT wall bracket and integrated junction box



VT wall bracket ball joint



### Ceiling brackets

VT ceiling bracket and internal cable channel



VT ceiling bracket ball joint



VT ceiling bracket ball joint



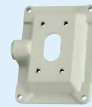
### Column bracket

VT column mount with ball joint



## Wall bracket accessories

VT wall bracket adapter plate



VT pole mount adapter



VT corner mount



VT waterproof junction box



## Other accessories

AXIS T90A Illuminators\*



AXIS PoE products



\* AXIS M11 Series in combination only with White LED from AXIS T90A Illuminators

YP3040 PT Motor (only in combination with AXIS Q1755 Network Camera)



## Technical specifications – AXIS T92E Housing Series

### AXIS T92E05 Protective Housing

<b>Supported cameras</b>	Indoor: AXIS M1103, AXIS M1104, AXIS P1311 Indoor/outdoor: AXIS M1113, AXIS M1114, AXIS P1343, AXIS P1344, AXIS P1346, AXIS P1347, AXIS Q1755
<b>Casing</b>	Aluminium casing, polycarbonate sunshield and cable cover. IP66- and NEMA 4X-rated, IK10 impact-resistant aluminum enclosure
<b>Power</b>	Not required
<b>Environment</b>	Indoor/outdoor
<b>Operating conditions</b>	See table below
<b>Protection rating</b>	IEC 60529 IP66, NEMA 250 Type 4X, IEC 62262 IK10
<b>Approvals</b>	IEC 60068-2-6, IEC 60068-2-27
<b>Weight</b>	2.4 kg (5.1 lb.)
<b>Included accessories</b>	VT wall bracket, sunshield, 2x short Ethernet cables, User's Guide, screw driver torx 20

### AXIS T92E20 Outdoor Housing

<b>Supported cameras</b>	AXIS M1113, AXIS M1114, AXIS P1343, AXIS P1344, AXIS P1346, AXIS P1347, AXIS Q1755
<b>Casing</b>	Aluminium casing, polycarbonate sunshield and cable cover. IP66- and NEMA 4X-rated, IK10 impact-resistant aluminum enclosure
<b>Power</b>	Power over Ethernet (PoE) IEEE 802.3af or High Power over Ethernet (High PoE) Power supply not included
<b>Environment</b>	Indoor/outdoor
<b>Operating conditions</b>	See table below Arctic Temperature Control enables camera start-up at temperatures as low as -40 °C (-40 °F)
<b>Protection rating</b>	IEC 60529 IP66, NEMA 250 Type 4X, IEC 62262 IK10
<b>Approvals</b>	EN 55022 Class B, EN 61000-3-2, EN 61000-3-3, EN 55024, EN 61000-6-1, EN 61000-6-2, EN 60950-22, IEC 60068-2-6, IEC 60068-2-27, FCC Part 15, Subpart B, Class B, VCCI, Class B ITE, C-tick AS/NZS CISPR 22, ICES-003, Class B
<b>Weight</b>	2.5 kg (5.5 lb.)
<b>Included accessories</b>	VT wall bracket, sunshield, 2x short Ethernet cables, User's Guide, screw driver torx 20

AXIS T92E05 Protective Housing – Operating conditions	
<b>AXIS Q1755</b>	0 °C to 45 °C (32 °F to 113 °F) Humidity 15 - 100% RH (condensing)
<b>AXIS P1343</b>	0 °C to 50 °C (32 °F to 122 °F) Humidity 15 - 100% RH (condensing)
<b>AXIS P1344</b>	0 °C to 50 °C (32 °F to 122 °F) Humidity 15 - 100% RH (condensing)
<b>AXIS P1346</b>	0 °C to 50 °C (32 °F to 122 °F) Humidity 15 - 100% RH (condensing)
<b>AXIS P1347</b>	0 °C to 50 °C (32 °F to 122 °F) Humidity 15 - 100% RH (condensing)
<b>AXIS M1113</b>	-20 °C to 50 °C (-4 °F to 122 °F) Humidity 15 - 100% RH (condensing)
<b>AXIS M1114</b>	-20 °C to 50 °C (-4 °F to 122 °F) Humidity 15 - 100% RH (condensing)
<b>AXIS P1311 Indoor</b>	-10 °C to 55 °C (14 °F to 131 °F) Humidity 15 - 100% RH (condensing)
<b>AXIS M1103 Indoor</b>	-20 °C to 50 °C (-4 °F to 122 °F) Humidity 15 - 100% RH (condensing)
<b>AXIS M1104 Indoor</b>	-20 °C to 50 °C (-4 °F to 122 °F) Humidity 15 - 100% RH (condensing)

AXIS T92E20 Protective Housing – Operating conditions	
<b>AXIS Q1755</b>	PoE IEEE 802.3af: -30 °C to 45 °C (-22 °F to 113 °F) High PoE IEEE 802.3at: -40 °C to 45 °C (-40 °F to 113 °F) Humidity 15 - 100% RH (condensing)
<b>AXIS P1343</b>	PoE IEEE 802.3af: -30 °C to 50 °C (-22 °F to 122 °F) High PoE IEEE 802.3at: -40 °C to 50 °C (-40 °F to 122 °F) Humidity 15 - 100% RH (condensing)
<b>AXIS P1344</b>	PoE IEEE 802.3af: -30 °C to 50 °C (-22 °F to 122 °F) High PoE IEEE 802.3at: -40 °C to 50 °C (-40 °F to 122 °F) Humidity 15 - 100% RH (condensing)
<b>AXIS P1346</b>	PoE IEEE 802.3af: -30 °C to 50 °C (-22 °F to 122 °F) High PoE IEEE 802.3at: -40 °C to 50 °C (-40 °F to 122 °F) Humidity 15 - 100% RH (condensing)
<b>AXIS P1347</b>	PoE IEEE 802.3af: -30 °C to 50 °C (-22 °F to 122 °F) High PoE IEEE 802.3at: -40 °C to 50 °C (-40 °F to 122 °F) Humidity 15 - 100% RH (condensing)
<b>AXIS M1113</b>	PoE IEEE 802.3af: -30 °C to 50 °C (-22 °F to 122 °F) High PoE IEEE 802.3at: -35 °C to 50 °C (-31 °F to 122 °F) Humidity 15 - 100% RH (condensing)
<b>AXIS M1114</b>	PoE IEEE 802.3af: -30 °C to 50 °C (-22 °F to 122 °F) High PoE IEEE 802.3at: -35 °C to 50 °C (-31 °F to 122 °F) Humidity 15 - 100% RH (condensing)

More information and a configuration tool is available at [www.axis.com/accessories](http://www.axis.com/accessories)