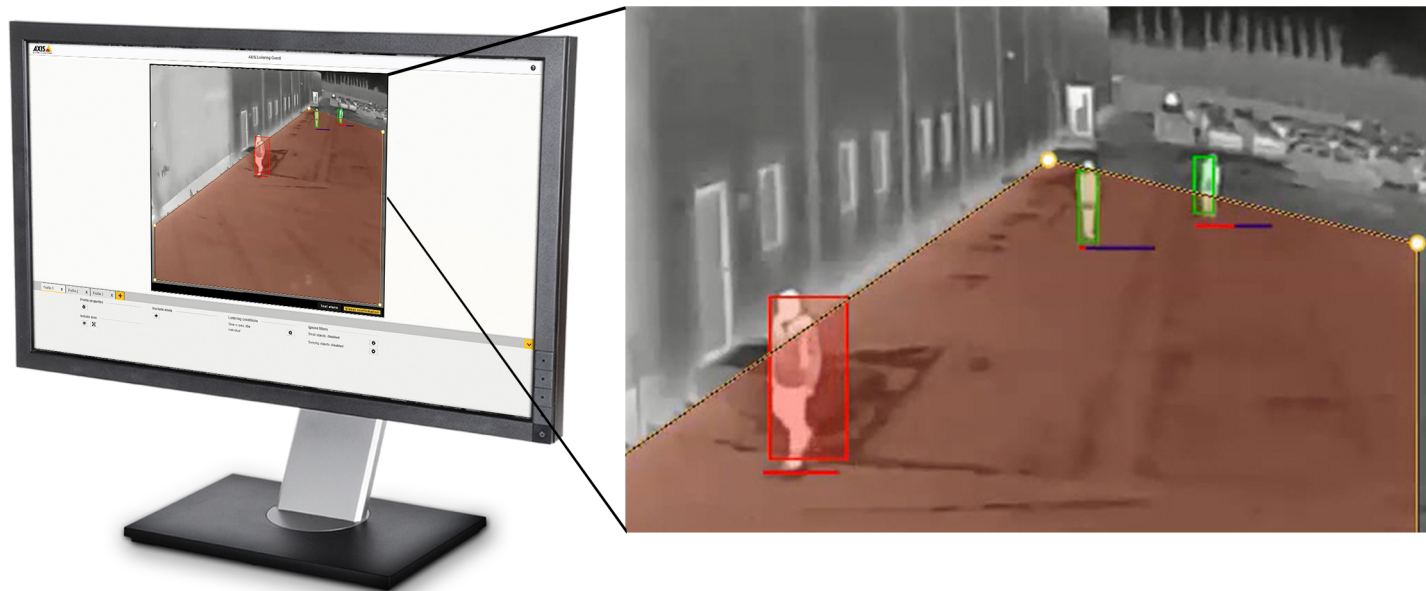


AXIS Loitering Guard

For detecting loiterers

AXIS Loitering Guard tracks moving objects such as people and vehicles, and triggers an alarm if they have been in a predefined area for too long. The application is ideal for detecting loiterers, particularly during after business hours, on semi-public properties such as office parking lots, school yards, and areas near fences. It can help prevent crime such as vandalism and break-ins. The application supports multiple profiles for different loitering conditions. Exclude areas, filters, and perspective configuration help reduce false alarms. Alarm overlays in live or recorded video highlight the object or area that is triggering the alarm.

- > **Intelligent tracking algorithm for loitering detection**
- > **Multiple loitering conditions and profiles for extra flexibility**
- > **Perspective configuration for fewer false alarms**
- > **Alarm overlay option for highlighting alarm objects**



AXIS Loitering Guard

Application		System integration	
Supported products	Axis network video products with support for AXIS Camera Application Platform and with firmware 7.10 or higher.	Application Programming Interface	Open API for software integration, including VAPIX® and AXIS Camera Application Platform; specifications at www.axis.com
Licenses	Single or 10-pack license codes can be purchased from an Axis distributor. One license is required per camera. The license can be activated from the camera or online. A 60-day trial version is available online. Note that this application is available at no additional cost for Axis Q-line products.	Event streaming	Supports event streaming to video management software (VMS) Integrates with camera event management system to enable event streaming to VMS and camera actions such as I/O control, notification, and edge storage. ONVIF® Motion Alarm event
Settings	Two loitering conditions: Individual: tracks the time of each moving object detected in a predefined area Group: tracks the time when there is any moving objects in a predefined area One loitering condition per profile One include area and 3 exclude areas per profile (10 point polygons) Up to 10 profiles for all cameras except multichannel products which have up to 3 concurrent profiles. Visual confirmation to verify setup Axis False Alarm Filtering for swaying objects and small objects Perspective configuration Alarm overlay ^a in one selected video resolution; In individual mode, overlay displays bounding boxes around alarm-triggering objects; In group mode, overlay highlights include area.	General	Languages English, German, French, Polish, Spanish, Italian, Russian, Simplified Chinese, Traditional Chinese, Japanese, Korean, Portuguese
Configuration	Web configuration included		a. <i>Only available for supported products with firmware 7.30 or higher. For a complete list of supported products, go to www.axis.com</i>
Scenarios		Environmental responsibility:	www.axis.com/environmental-responsibility
Typical applications	General low-traffic areas where loitering might pose a security issue, such as parking lots, school yards, and fenced-off areas		
Limitations	Weather conditions such as heavy rain or snow may affect detection accuracy. The resolution of video streams with alarm overlay enabled is limited to 1280 pixels in width and the corresponding height for the current aspect ratio.		