



Creativity Progress & Excellence

Network Product



## Feature Guide for Series II & III iMEGAPRO

### Sense Up Plus:

Manufacturers have traditionally utilised frame integration technology to improve the low light performance in CCTV cameras. Whilst effective at producing a low light image, 'motion blur' is a common problem in areas with movement. Sense Up Plus utilises intelligent image signal processing with a highly sensitive CMOS sensor, AGC control and 3D noise reduction provide the ultimate low light image without any 'motion blur' or noise.

Colour



Colour Sense Up Plus



HD clarity



### Quadruple Streaming:

Within the main profile four individual streams are available; two H.264 streams; one at 1080P resolution the other at 480P and two JPEG streams; 480P and CIF resolution respectively. Each can be set up to a maximum 30 FPS. The advantages are that each client can request a stream from the camera to suit its needs. For example the recording device could use the 1080P H.264 stream at 30 FPS, whilst mobile devices might connect to the JPEG CIF stream to save bandwidth and increase transmission speed.

### Region of Interest (ROI):

A ROI is a designated area within each camera view. This can then be delivered to the recording device as an individual stream. For example; a shop counter (overall image) is streamed at 2 FPS whilst the ROI is zoomed into the till and streamed at 15 FPS giving faster updates of this sensitive area.

### E Tour:

Digitally zoom and move around the camera image. Preset positions can be stored and a tour can then move around those preset positions as though it were a mechanical pan and tilt camera.

### Weighted Mode:

Each stream has the option to be set to weighted mode. When enabled the stream will transmit at 1 FPS regardless of the programmed FPS. Upon an alarm the frame rate will increase to its programmed values. This optimises both hard drive recording space and bandwidth usage but still maintains continuous surveillance recording.

### IR Illumination:

Already a leader in infrared integration, our expertise in this field has been applied to create the largest ranges of IR integrated IP cameras. IR LED illumination can be achieved for distances up to 60 metres.

### ONVIF:

LILIN were the first company in the world to produce a range of ONVIF compatible products. This enables our range of cameras to work with many Video Management Software solutions including, Milestone, Genetec, Axxon, NUUO and GeoVision to name but a few.

### Alarms can be activated using a number of modes:

#### Motion Detection:

Detects motion within a selected zone

#### Face Detection:

Detects a human face within a selected zone

#### Tamper Detection:

Detects changes in the camera image, such as spray painting, focus drift or the camera field of view moving

#### Audio Detection:

Activates an alarm if sound is detected (audio models only)

### Other Features:

#### Privacy Masking:

8 privacy zones to block out parts of the video, ideal for applications such as chip and pin terminals

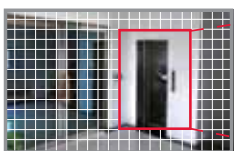
#### Power over Ethernet (PoE):

Enabling one cable solution for both power and video/data

#### Graphic User Interface (GUI):

iMEGAPRO II & III use the same user interface as LILIN's 720P and 1.3 megapixel IP camera range. This familiar and user friendly interface ensures smooth integration and quick configuration

### Motion Detection



Recording



### Face Detection



Detecting



Face

### Tampering Detection



Alarm



Alarm



## CMX HD3.6 Version Software



### Features

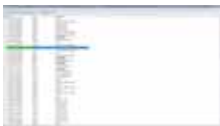
- Support unlimited channels
- Support H.264 or JPEG
- Alarm management—Preset calling, alarm snapshots, PC audio alarm, and alarm DO output
- eMap—Alarm snapshot, alarm live, and eMap live monitoring
- Recording—Support 1080P IP Camera DVR
- User management—Video grouping with user access right management
- Mobile phone—Support iPhone, iPad, and Android
- Web access—Support web live video monitoring
- Long-hour recording— Support iSCSI & NAS recording and alarm motion recording
- System integration—Support retail and transportation
- Audio monitoring—two-way audio



- **NVR Central**  
H.264 AVC full D1/HD recording  
User access level  
Group monitoring  
Smart search  
PTZ control  
Audio monitoring



- **eMap Manager**  
eMap  
Live monitoring alarm triggering  
Alarm snapshots  
Device find  
PTZ control



- **Database Manager**  
Event and alarm management  
Network status report  
Database maintenance  
Database import & export  
Reports

### CMX 3.6 HD Software Specification

CMX 3.6 HD Software Specification		
Recording	Recording	Schedule / Motion detection / Manual recording
	Live	Unlimited channels
	Speed	Up to 1080P 30 FPS and ROI recording supported
	Resolution	1080P / HD 1280 * 768 / D1 720 * 480 / VGA: 640 * 384 / CIF 320 * 240 / CIF: 320 * 192
	Schedule	7 day * 24 hrs time table, recording mode configurable
	Alarm recording	Face detection, audio detection, tampering, motion, DI alarm detection
Playback	Playback	Time search, event search, date search, POS smart search
	Speed	FR: 2x, 4x, 8x, 16X 32X / FF: 2x, 4x, 8x, 16X, 32X
Video Input	Compression	H.264 / JPEG
	Video Input	Unlimited Merit LILIN IP cameras / DVR connections
	Camera name	20 characters
	Channel editing	Mouse drag-n-drop
Multiplexer	Digital zoom	Yes, ePTZ supported
	Grouping	User grouping authentication assignable for eMap, and CMX HD 3.6 Software
Alarm	Multiplexer	Sequence
	Split screen	4, 9, 16, 36
Accessories	Alarm management	PC sound, redirect IP camera DO, eMail snapshots, redirect a PTZ preset recall
	Event	Various alarm log, video loss, stop recording, schedule, logon, operation log
	Digital output	Controllable
eMap	P/T/Z protocol	LILIN PTZ controllable via HTTP
	Audio	PCM/G.711, two-way audio, audio recording
	POS/barcode Scan	RS-232/PS/2
	Keyboard	PIH-931D keyboard controllable via RS-485 for PTZ, ePTZ, and ROI features
DB Manager	eMap live monitoring	One channel for IP camera/multi-channel for DVR
	eMap snapshot	Yes
Remote Manager	PTZ control	Yes
	Database	Database configuration import, export, report, and maintenance
Management	Remote Manager	Remote device configuration
	Device status monitoring	Schedule remote device status monitoring
Network	Backup	DVR remote backup, AVI conversion and JPEG snapshots
	Access log	Complete access log in database manager
	User management	User authentication: three level: admin, operator, and guest, features configurable
Other	Recording calculator	Yes, dynamically calculating available recording days
	Web interface	Live web interface
	Mobile support	iPhone and Android
	Protocols	ARP / TCP/IP / HTTP / SMTP / DNS / PPPoE
Other	IPScan	Supported, easy-to-setup for IP address
	DST	Daylight saving time by Windows OS
	OS	Windows 7 Home, Windows Vista Home, and Windows XP Home
	Language	English, Chinese, Spanish, French, and German
	CPU requirement	Minimum Intel Duo CPU 2.0 GHz or above
	RAM requirement	4GB memory



# CMX HD3.6 Version Software

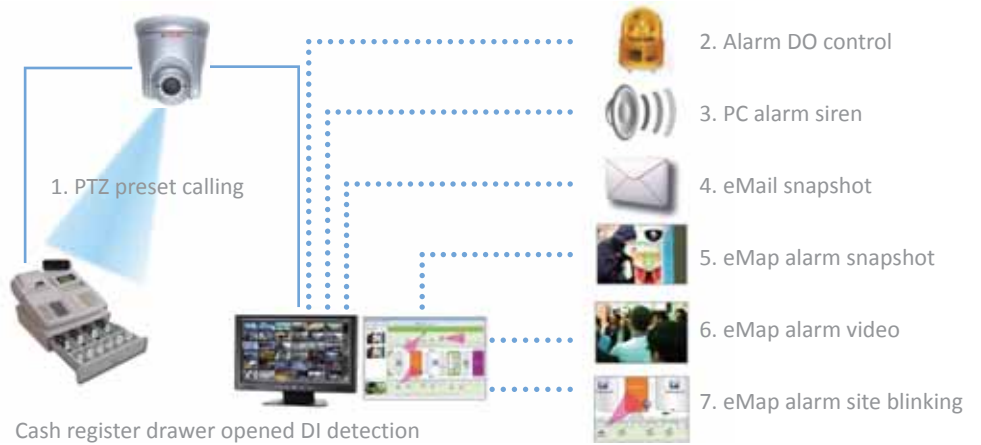
CMX HD3.6 Version Software	
Live	Playback
eMap Alarm & Video Management	
<ol style="list-style-type: none"> <li>1. Alarm Snapshot</li> <li>2. Alarm site blinking</li> <li>3. Camera view representation</li> <li>4. Multi-video</li> <li>5. Alarm live video</li> <li>6. Alarm live retrieve</li> <li>7. Alarm map switching</li> <li>8. Map representation</li> </ol>	
Retail and Distributor Solution	
<ol style="list-style-type: none"> <li>1. Live Transactions</li> <li>2. Playback Invoice Display on Video</li> <li>3. Invoice Smart Search</li> <li>4. Alarm/record bar</li> <li>5. Invoice Display</li> <li>6. Invoice Playback</li> </ol>	
Open Platform With Hierarchical Group Management Architecture	
<ol style="list-style-type: none"> <li>1. Mobile Phone</li> <li>2. Web-based Live</li> <li>3. Store IP/DVR recording</li> <li>4. HQ monitoring</li> <li>5. HQ Map monitoring</li> </ol>	



# CMX HD3.6 Version Software

## Alarm Input / Output Management

### Retail and Transportation Solution Example



## CMX Software HD 3.6 Architecture





# 36CH CMX Software (Advance)

Network Products

CMX Software

## 36CH CMX Software (Advance)



### Features

- 36 camera license for HD NVR Enterprise software secured by USB dongle key
- High performance software for D1~ 8M megapixel IP camera recording
- Full functions on alarm management and email notification

### NVR Software



NVR Software

1. Time Slider: To search and playback video instantly according to event types
2. Spooler: Temporary saving area for video clips & pictures to be exported
3. Unlimited ROI (Region Of Interests): Separate video display for sensitive area
4. Support Web Map: import your Google Map or Yahoo Map
5. Comprehensive Alarm Management: Single window to show live video, playback, PTZ preset and e-map